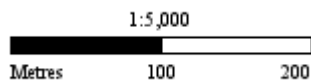
 **Subject Land**      **Address:** Mullum Mullum Reserve 1-41 Springvale Road DONVALE VIC, 3111

Whilst all care has been taken in the preparation of this cadastral base map, Manningham and the State of Victoria accepts no responsibility for the accuracy of any information shown. Users should rely on their own enquiries in order to validate information shown on this map. This information is for Demonstration only.

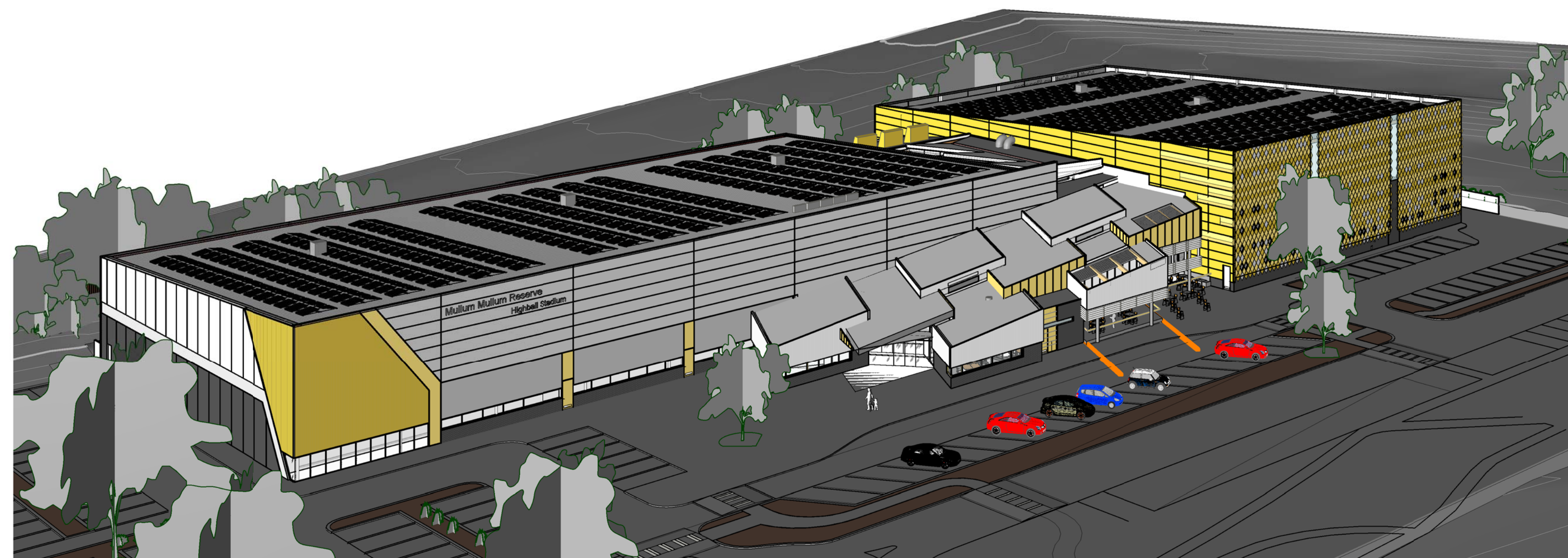


13/11/2015 10:01 AM



## Drawing Schedule

Architectural - Planning Issue

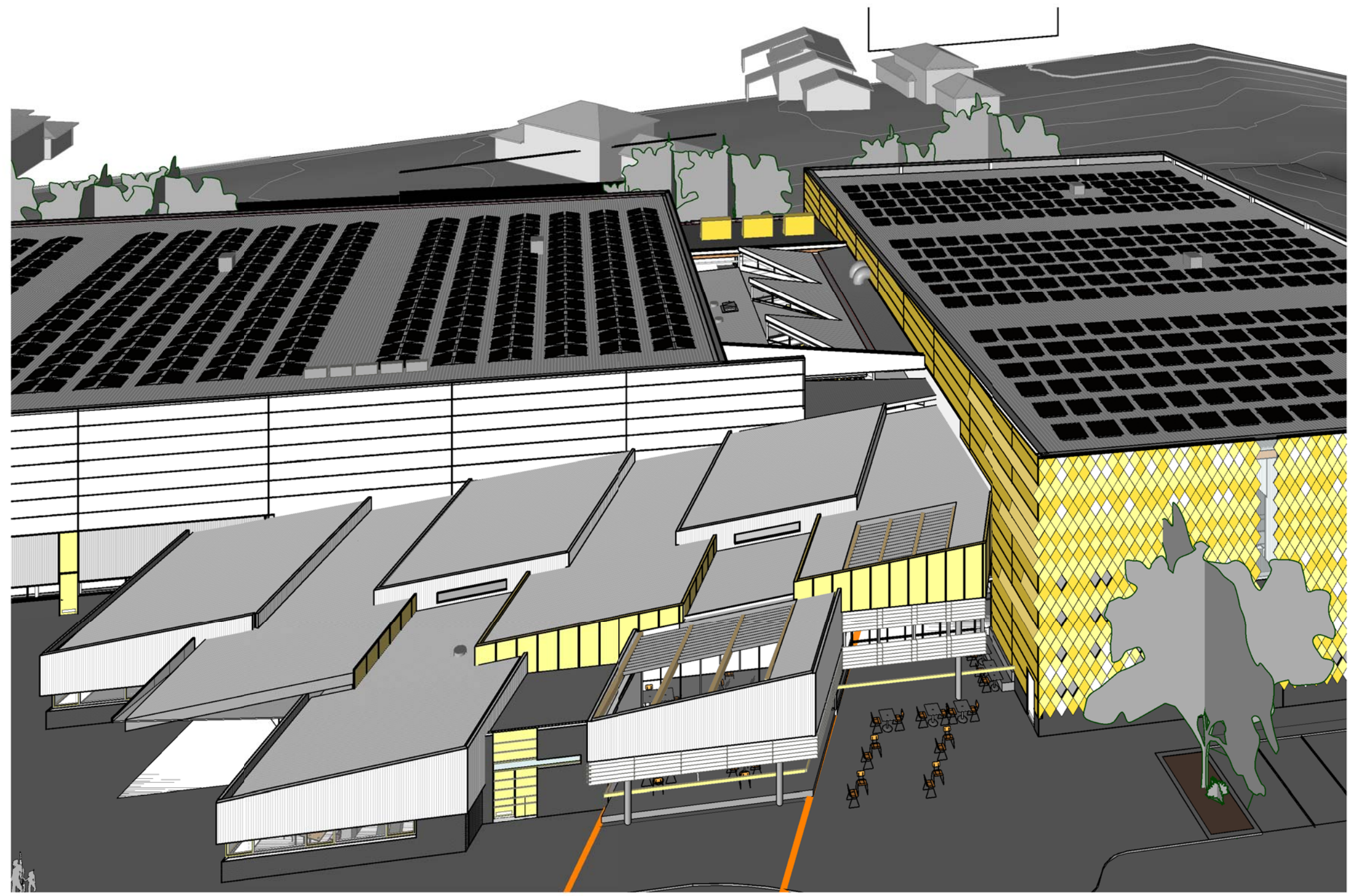


TP-00	Cover Sheet
TP-01	3-D
TP-02	Site Plan
TP-03	Ground Floor Plan
TP-04	First Floor Plan
TP-05	Roof Plan
TP-06	Building Elevations - Sheet 1
TP-07	Not Used
TP-08	Building Sections - Sheet 1
TP-09	Building Sections - Sheet 2

Mullum Mullum Reserve Highball Stadium

#272

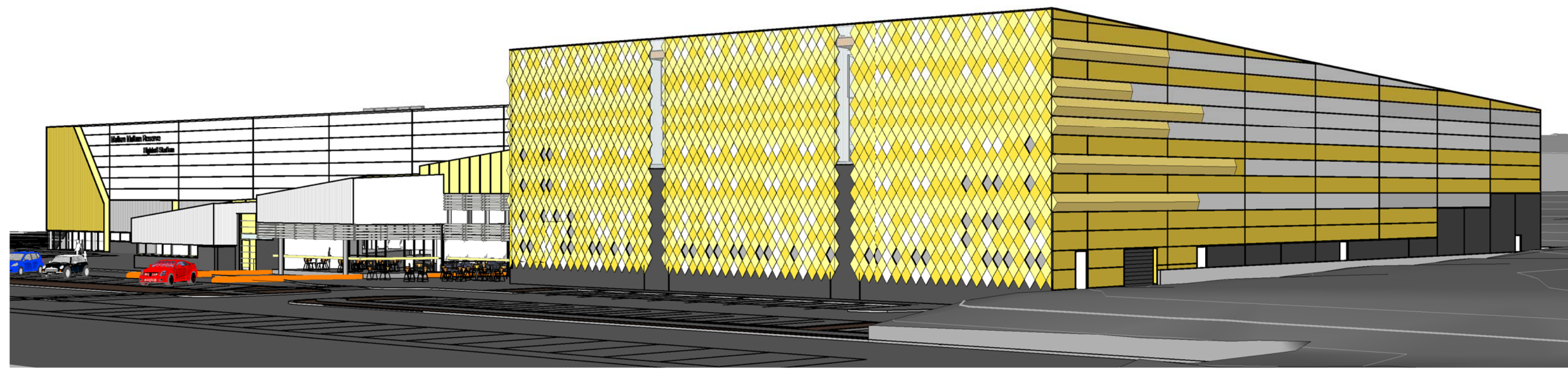




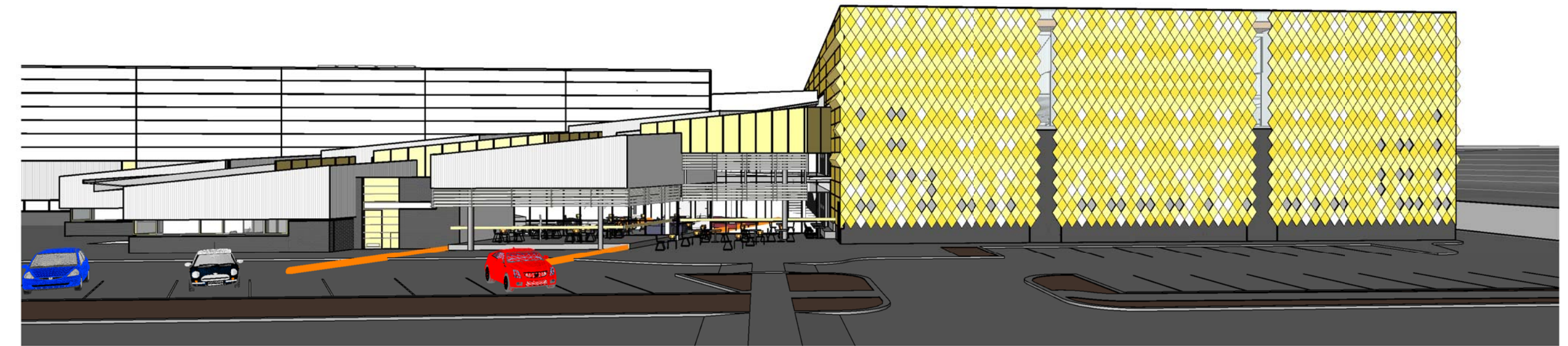
1 TP\_Ext - Aerial of Entry



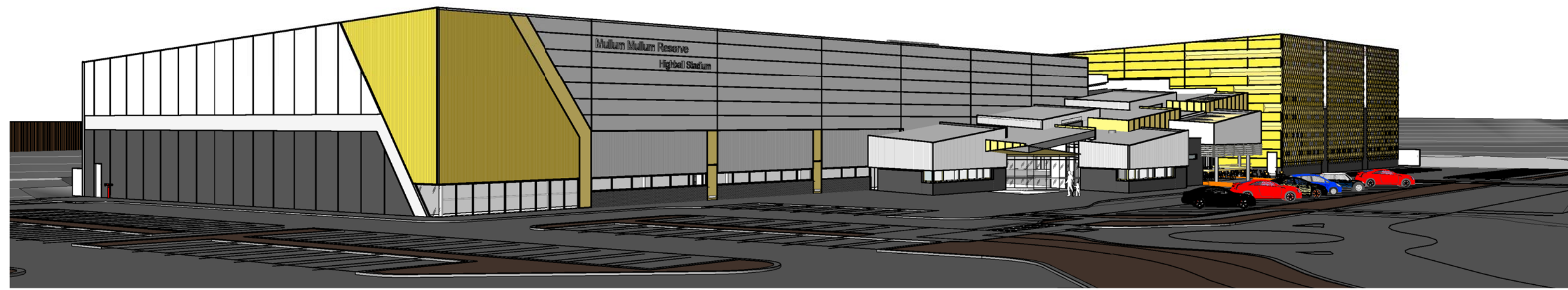
2 TP\_Ext - Entry



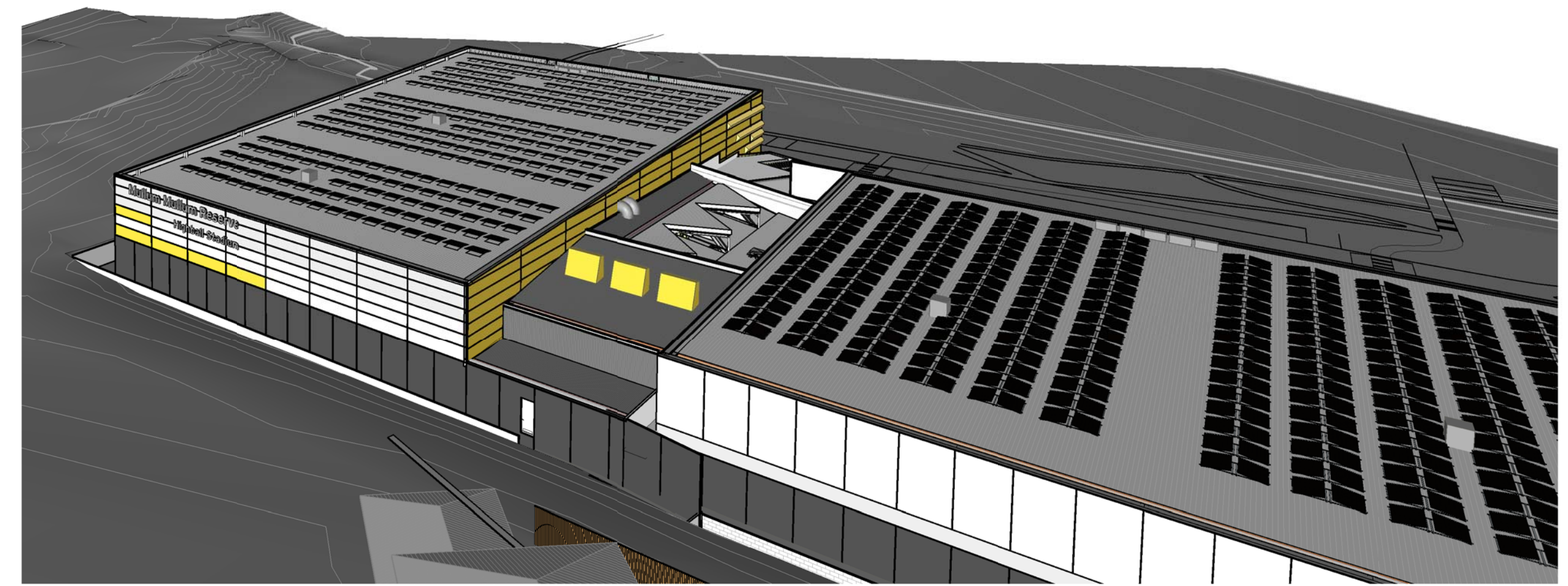
3 TP\_North West



4 TP\_North

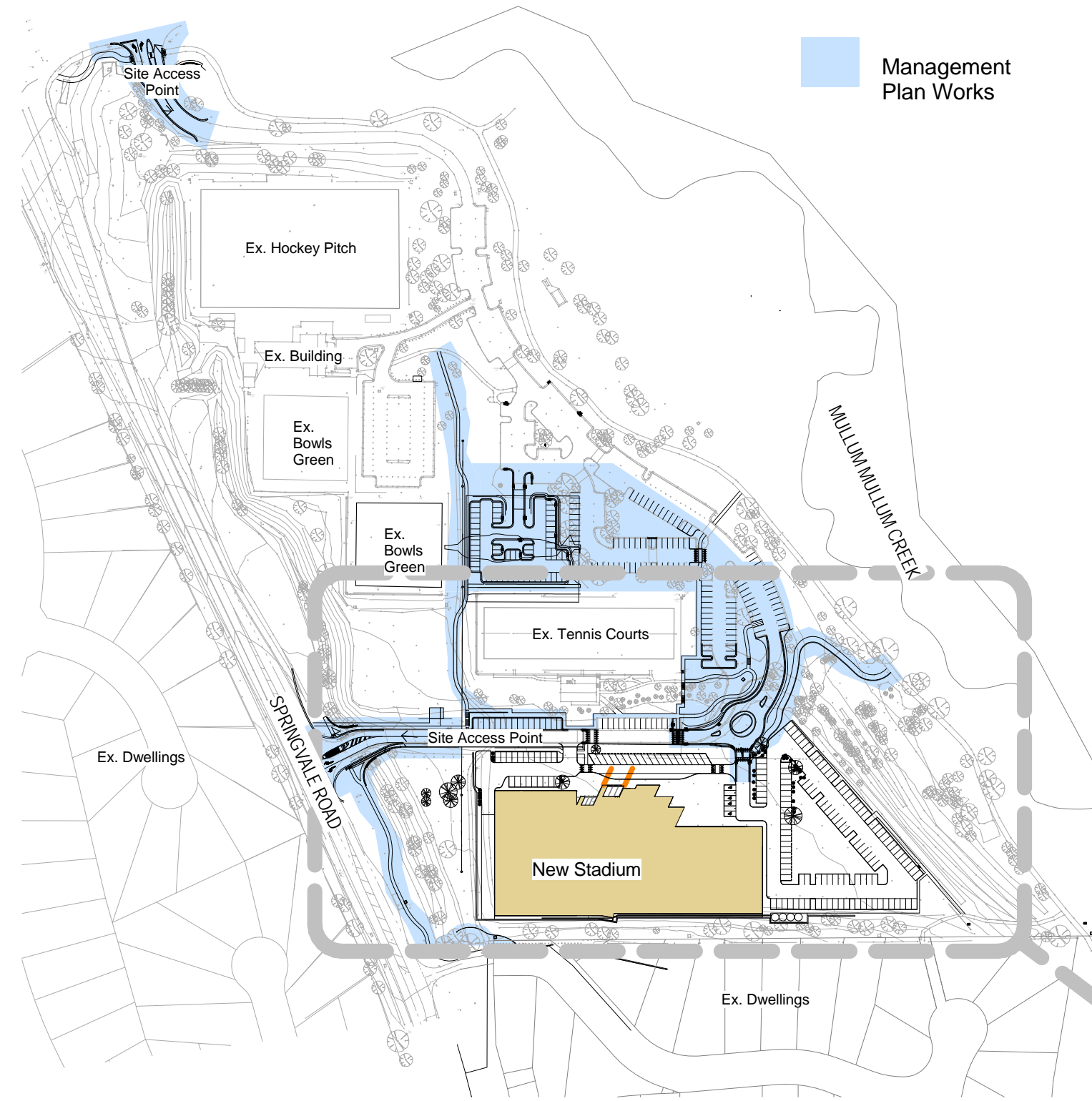


5 TP\_North East

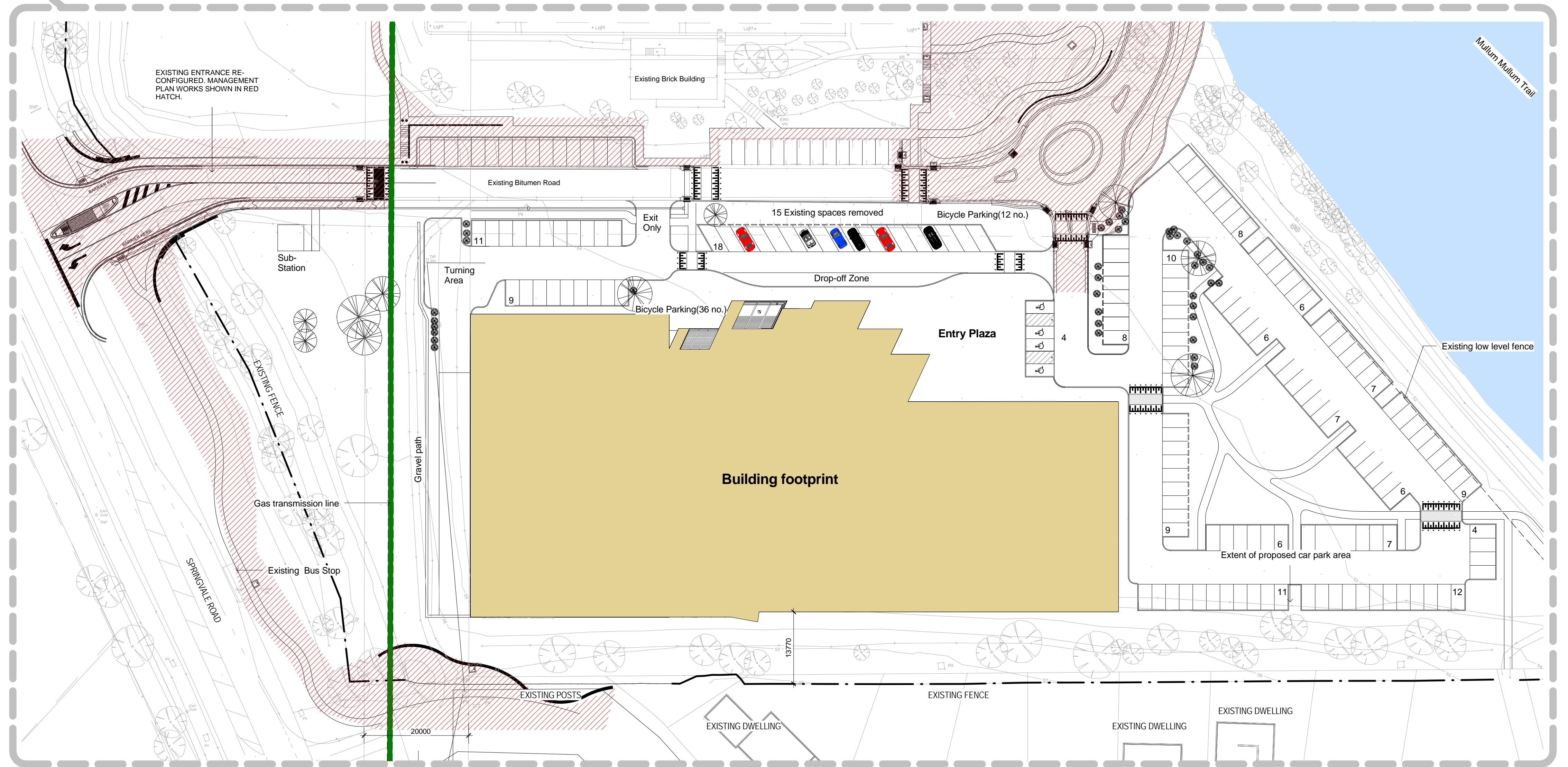


6 TP\_Ext - Aerial from South





**1 TP Site Precinct**  
1 : 2500



 Management Plan Works

PARKING	
30	Existing Vehicle Spaces (June 2015)
+16	Increase
- 1	Decrease
+158	Building Works Increase
- 15	Decrease
<b>188</b>	<b>Total Vehicle Spaces</b>
48	New Bicycle Parking

**2 TP Site Plan**  
1 : 500

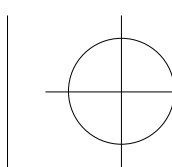
17.07.15	2	Revised Planning Drawings
04.06.15	1	Revised Town Planning Drawings
Date	No.	Amendment

Date	No.	Amendment
------	-----	-----------

Client  
**Manningham City Council**

Project  
**Mullum Mullum Reserve Highball Stadium**  
Springvale Road, Donvale, Victoria

Drawing  
**Site Plan**



Date 24.07.14  
Drawn TI, BB  
Scale As indicated

Project No. #272  
Drawing No. TP-02

Revision  
P2



**Building Area**

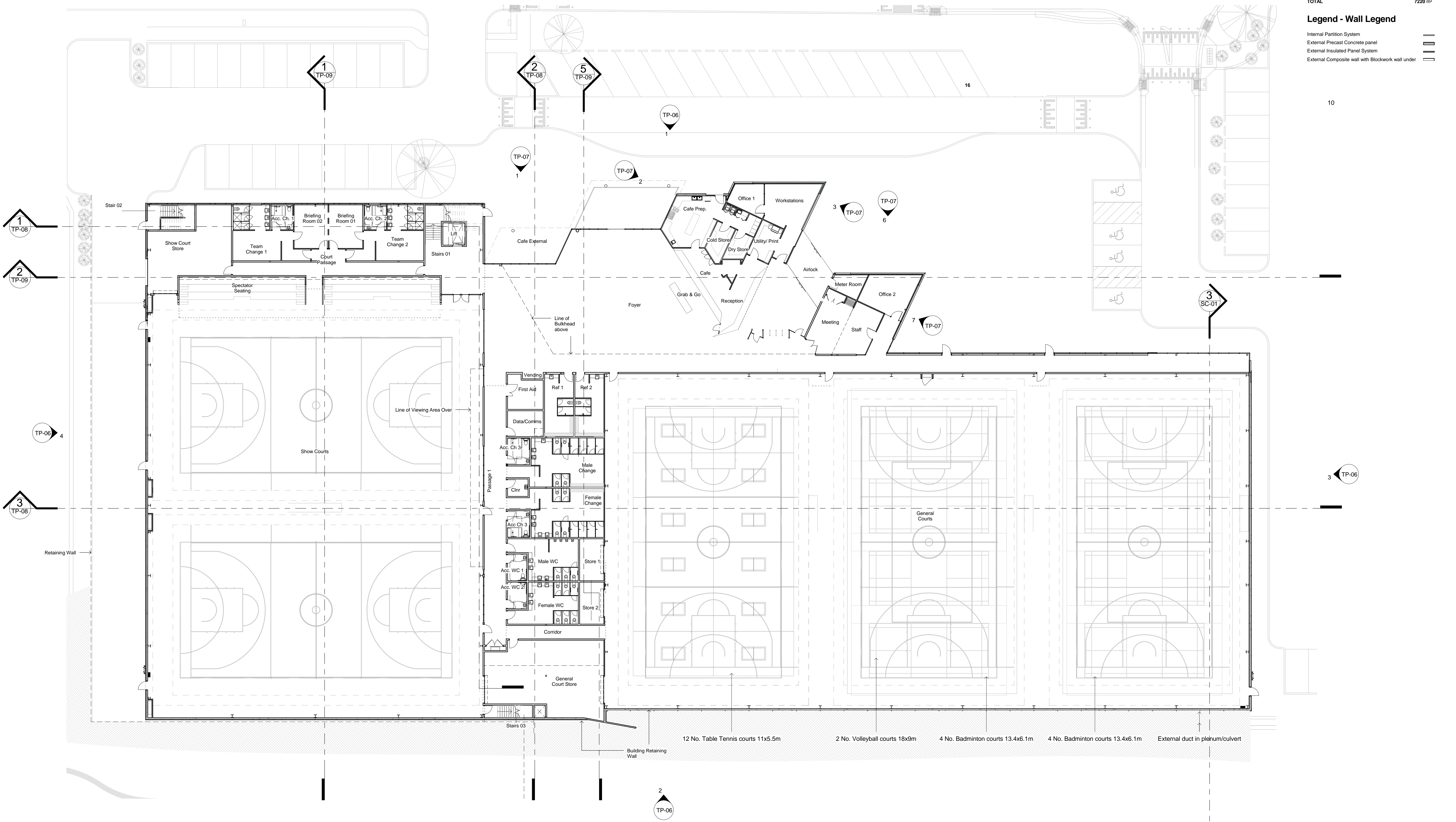
Ground Floor Plan 6324 m<sup>2</sup>

First Floor Plan 896 m<sup>2</sup>

**TOTAL** 7220 m<sup>2</sup>

**Legend - Wall Legend**

- Internal Partition System ---
- External Precast Concrete panel ▬
- External Insulated Panel System ▬
- External Composite wall with Blockwork wall under ▬



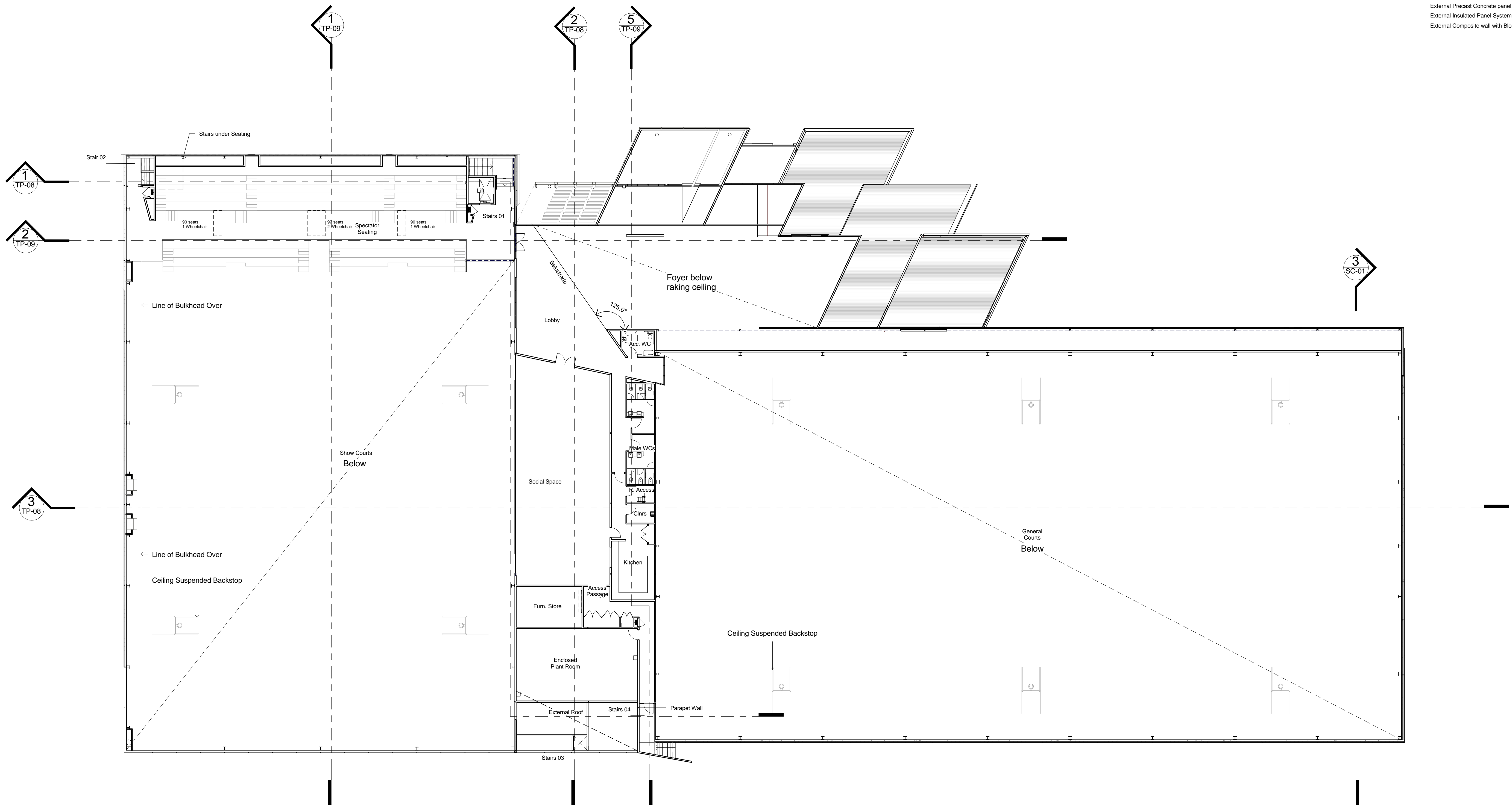
**1 TP\_Ground Floor Plan**  
1 : 200



Building Area	
Ground Floor Plan	6324 m <sup>2</sup>
First Floor Plan	896 m <sup>2</sup>
<b>TOTAL</b>	<b>7220 m<sup>2</sup></b>

**Legend - Wall Legend**

Internal Partition System	---
External Precast Concrete panel	▬
External Insulated Panel System	▬
External Composite wall with Blockwork wall under	▬



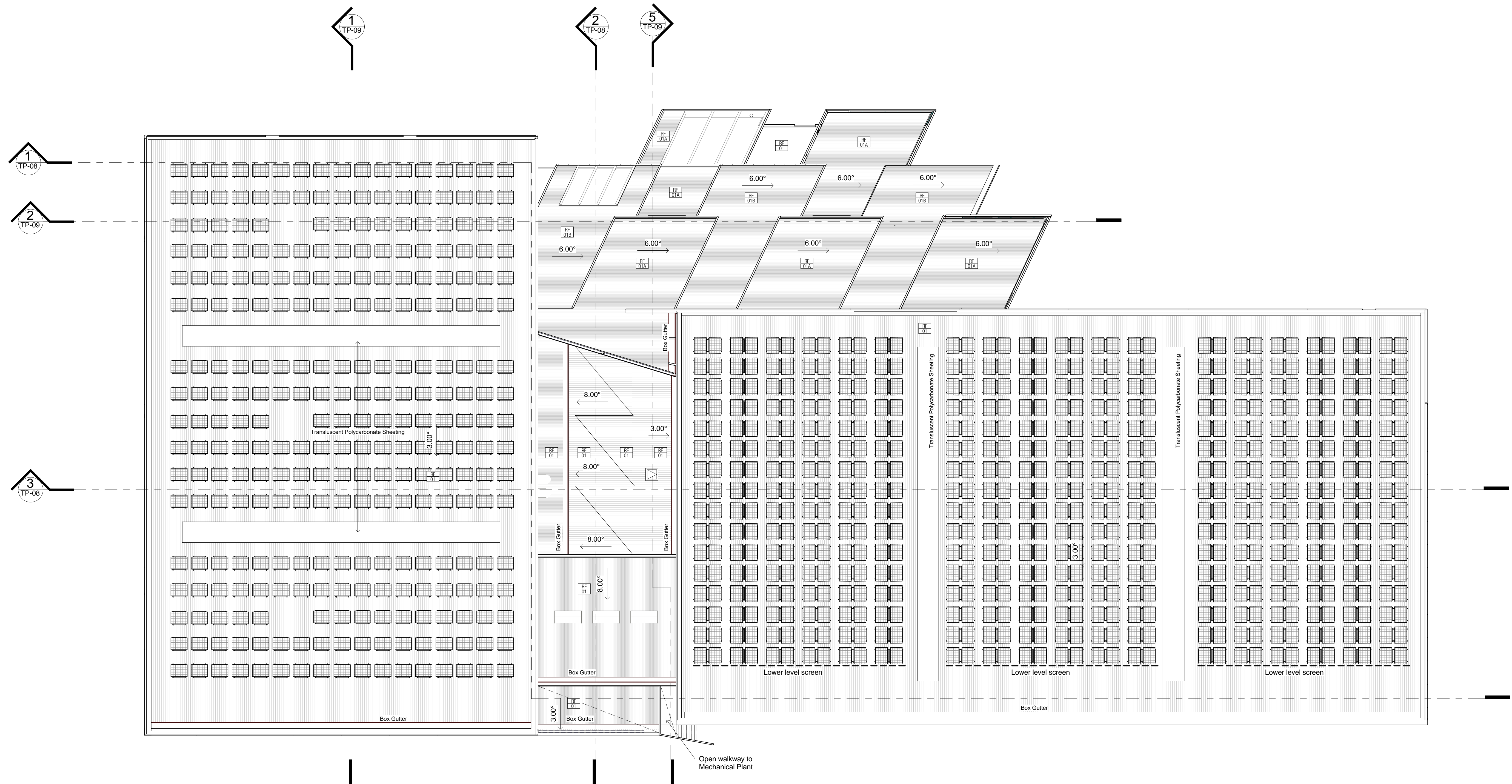
**1 TP\_First Floor - Plan**  
1 : 200



**LEGEND - Roof Finishes**

XX FINISH TYPE  
00 FINISH NUMBER

**ROOFING**  
 RF 01 COLORBOND PROFILED METAL SHEET, Colour: Windspray  
 RF 01A PROFILED METAL SHEET, Colour: to match Kingspan 'Silver Coin'  
 RF 01B PROFILED METAL SHEET, Colour: to match Kingspan 'Portico Grey'



**1 TP\_Roof Plan**  
1 : 200

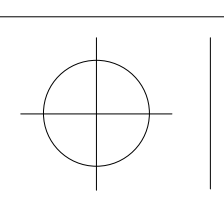
17.07.15	2	Revised Planning Drawings
04.06.15	1	Revised Town Planning Drawings
Date	No.	Amendment

Date	No.	Amendment
------	-----	-----------

Client  
**Manningham City Council**

Project  
**Mullum Mullum Reserve Highball Stadium**  
Springvale Road, Donvale, Victoria

Drawing  
**Roof Plan**



Date 24.07.14  
 Drawn Author  
 Scale 1 : 200

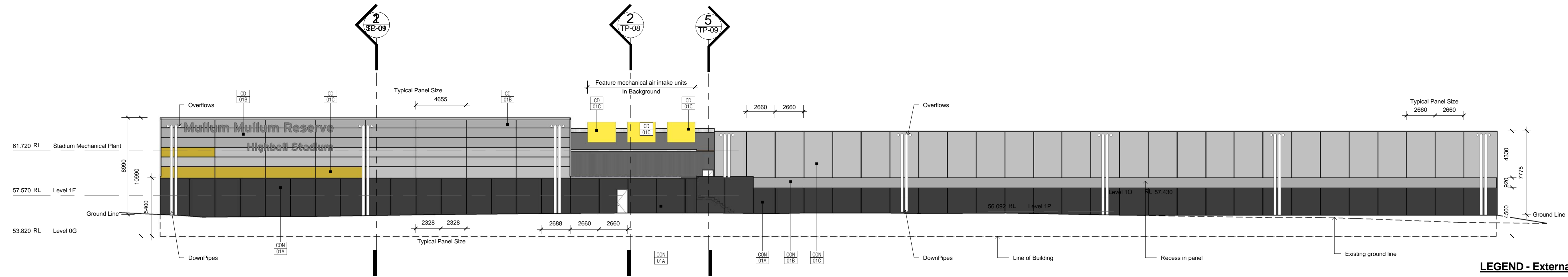
Project No. #272  
 Drawing No. TP-05

Revision  
P2

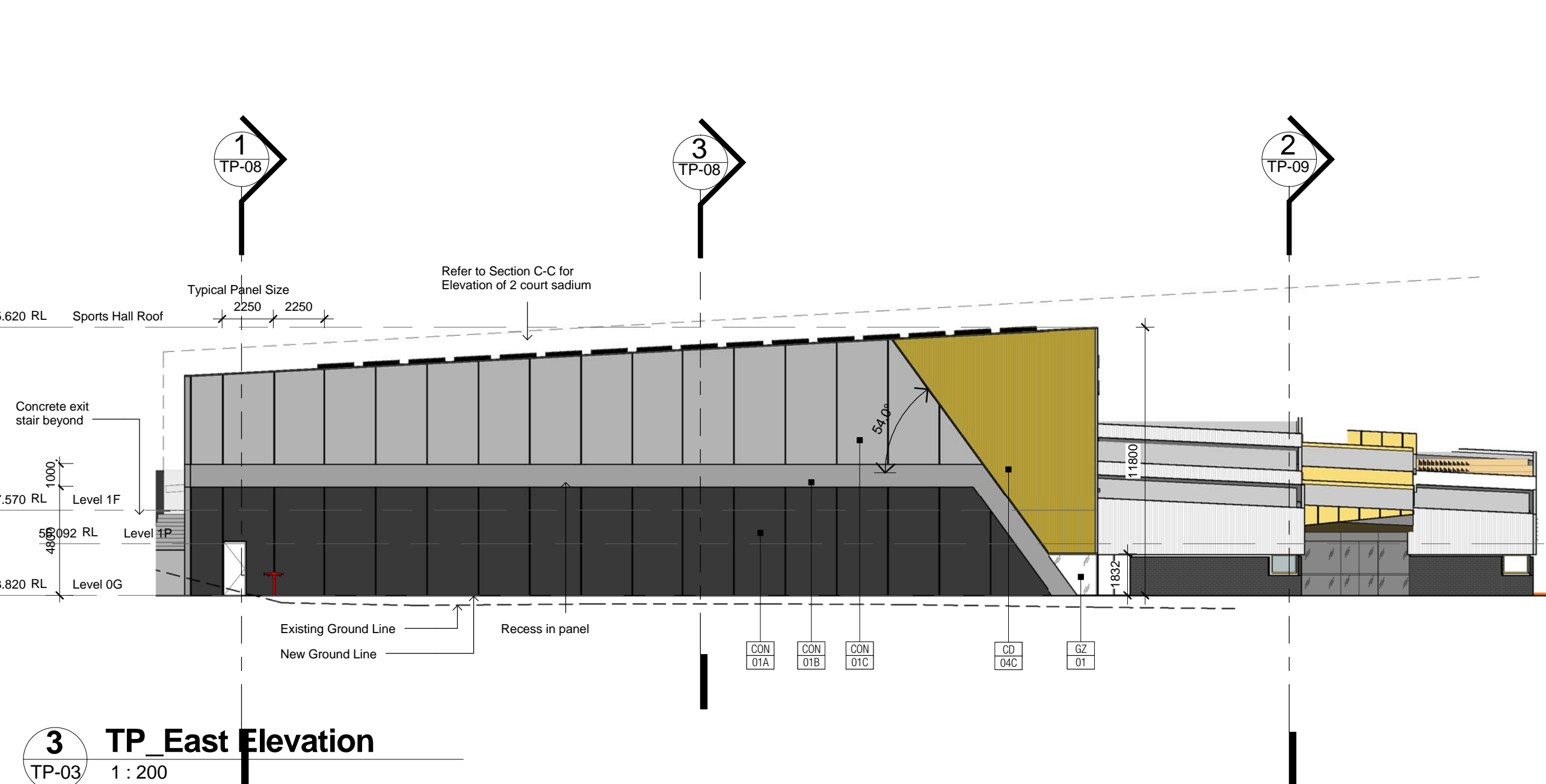




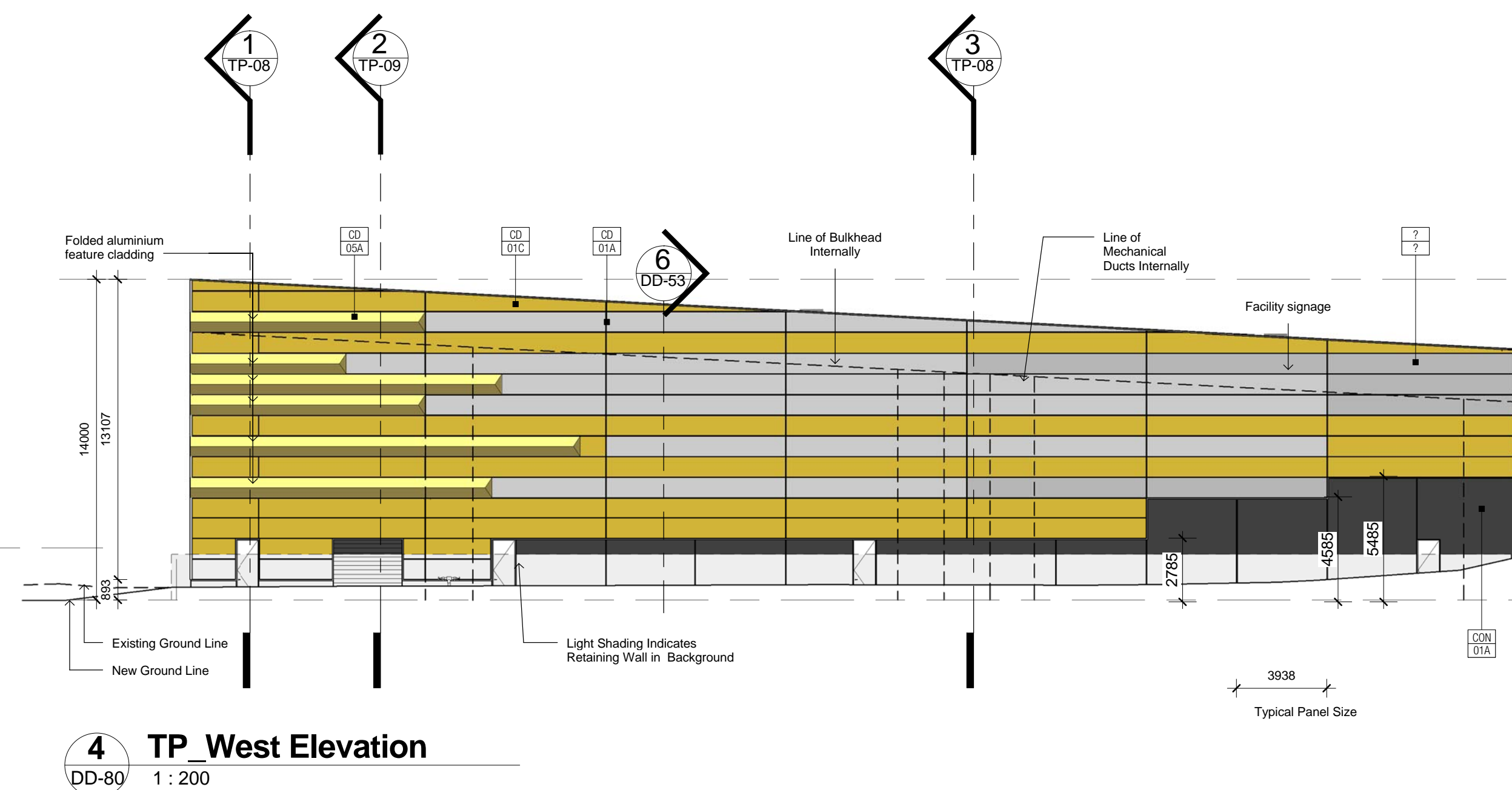
**1 TP\_North Elevation**  
TP-03 1 : 200



**2 TP\_South Elevation**  
TP-03 1 : 200



**3 TP\_East Elevation**  
TP-03 1 : 200

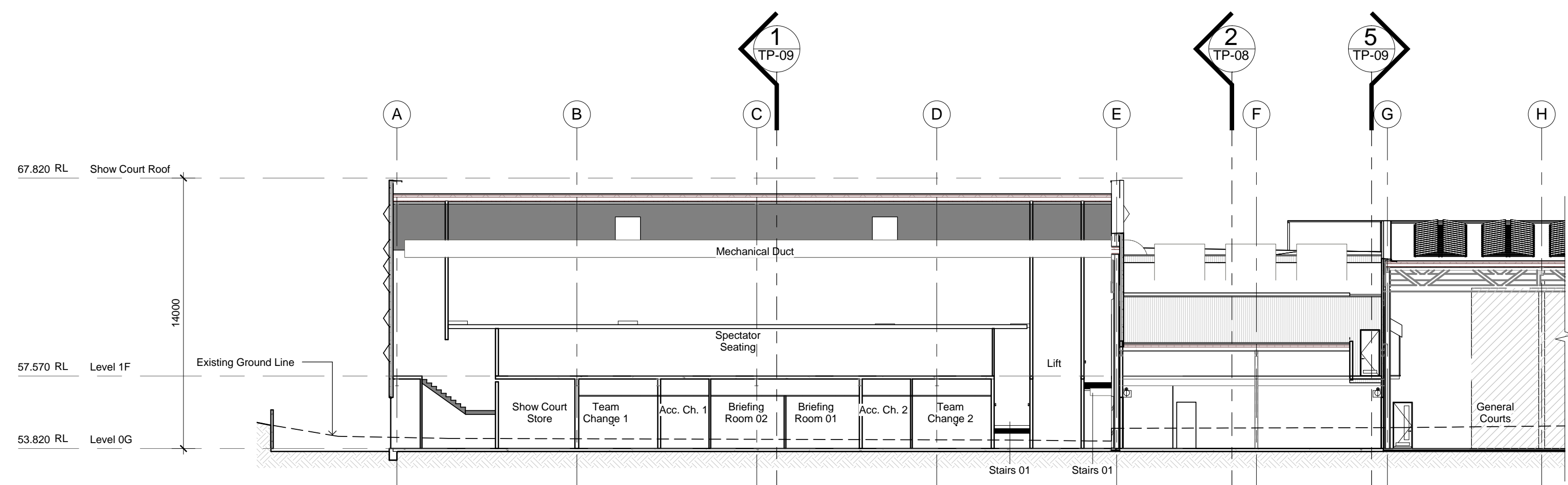


**4 TP\_West Elevation**  
DD-80 1 : 200

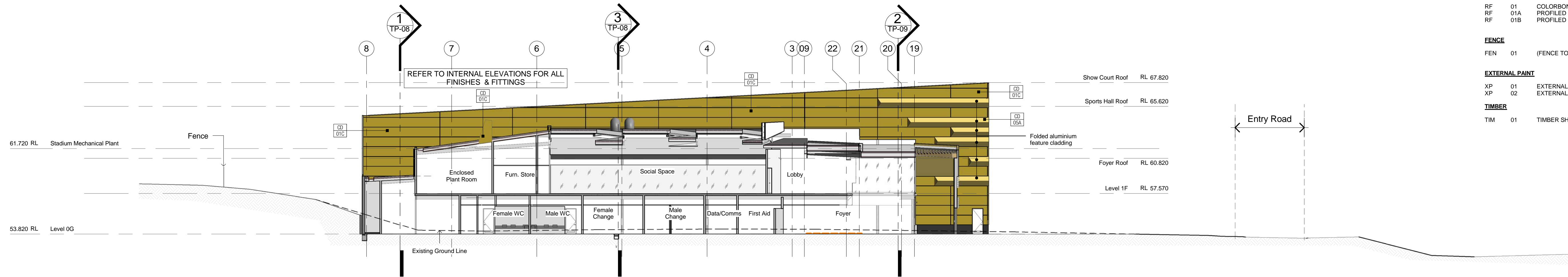
**LEGEND - External Finishes**

FINISH TYPE	FINISH NUMBER	
<b>CLADDING</b>		
CD 01A	INSULATED PANELS TYPE 1	Colour: Kingspan 'Silver Coin'
CD 01B	INSULATED PANELS TYPE 1	Colour: Kingspan 'Silver Smith'
CD 01C	INSULATED PANELS TYPE 1	Colour: Kingspan 'Temple Gold'
CD 02A	INSULATED PANELS TYPE 2	Colour: Kingspan 'Silver Coin'
CD 02B	INSULATED PANELS TYPE 2	Colour: Universal Anodisers 'Doeskin'
CD 02C	INSULATED PANELS TYPE 2	Colour: Kingspan 'Temple Gold'
CD 03	INSULATED PANELS TYPE 3	Colour: Kingspan 'Silver Coin'
CD 04A	INSULATED PANELS TYPE 4	Colour: Kingspan 'Silver Coin'
CD 04B	INSULATED PANELS TYPE 4	Colour: Kingspan 'Silver Smith'
CD 04C	INSULATED PANELS TYPE 4	Colour: Kingspan 'Temple Gold'
CD 04D	INSULATED PANELS TYPE 4	Colour: Kingspan 'Portico Grey'
CD 05A	COMPOSITE CLADDING	Colour: Universal Anodisers 'Doeskin'
CD 05B	COMPOSITE CLADDING	Colour: Kingspan 'Silver Coin'
CD 06	PROFILED METAL SHEET	Colour: to match Kingspan 'Portico Grey'
CD 07	TRANSLUCENT SHEETS	
<b>CONCRETE</b>		
CON 01A	PRECAST CONCRETE TYPE 1	Colour: Nawkaw 'Diorite'
CON 01B	PRECAST CONCRETE TYPE 1	Colour: Nawkaw 'Hornblende'
CON 01C	PRECAST CONCRETE TYPE 1	Colour: Nawkaw 'Water Grey'
CON 02	PRECAST CONCRETE TYPE 2	Colour: Nawkaw 'Diorite'
<b>BRICKWORK / BLOCKWORK</b>		
BR 01	GLAZED BRICKWORK	Euroa Silver Black
<b>GLAZING</b>		
GZ 01	ALUMINIUM FRAMED GLAZING	
<b>ROOFING</b>		
RF 01	COLORBOND PROFILED METAL SHEET	Colour: Windspray
RF 01A	PROFILED METAL SHEET	Colour: to match Kingspan 'Silver Coin'
RF 01B	PROFILED METAL SHEET	Colour: to match Kingspan 'Portico Grey'
<b>FENCE</b>		
FEN 01	(FENCE TO CAFE TERRACE)	
<b>EXTERNAL PAINT</b>		
XP 01	EXTERNAL PAINT SYSTEM STEELWORK	
XP 02	EXTERNAL PAINT SYSTEM DUCTWORK	
<b>TIMBER</b>		
TIM 01	TIMBER SHADE STRUCTURE	

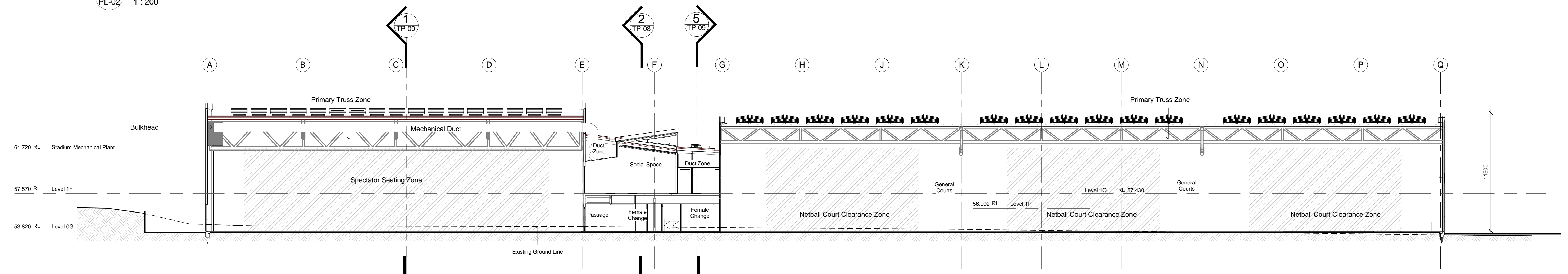




**1 TP Building Section A-A**  
DD-80 1 : 200



**2 TP Building Section B-B**  
PL-02 1 : 200



**3 TP Building Section C-C**  
TP-03 1 : 200

**LEGEND - External Finishes**

FINISH TYPE	FINISH NUMBER
<b>CLADDING</b>	
CD 01A	INSULATED PANELS TYPE 1, Colour: Kingspan 'Silver Coin'
CD 01B	INSULATED PANELS TYPE 1, Colour: Kingspan 'Silver Smith'
CD 01C	INSULATED PANELS TYPE 1, Colour: Kingspan 'Temple Gold'
CD 02A	INSULATED PANELS TYPE 2, Colour: Kingspan 'Silver Coin'
CD 02B	INSULATED PANELS TYPE 2, Colour: Universal Anodisers 'Doeskin'
CD 02C	INSULATED PANELS TYPE 2, Colour: Kingspan 'Temple Gold'
CD 03	INSULATED PANELS TYPE 3, Colour: Kingspan 'Silver Coin'
CD 04A	INSULATED PANELS TYPE 4, Colour: Kingspan 'Silver Coin'
CD 04B	INSULATED PANELS TYPE 4, Colour: Kingspan 'Silver Smith'
CD 04C	INSULATED PANELS TYPE 4, Colour: Kingspan 'Temple Gold'
CD 04D	INSULATED PANELS TYPE 4, Colour: Kingspan 'Portico Grey'
CD 05A	COMPOSITE CLADDING, Colour: Universal Anodisers 'Doeskin'
CD 05B	COMPOSITE CLADDING, Colour: Kingspan 'Silver Coin'
CD 06	PROFILED METAL SHEET, Colour: to match Kingspan 'Portico Grey'
CD 07	TRANSLUCENT SHEETS.
<b>CONCRETE</b>	
CON 01A	PRECAST CONCRETE TYPE 1, Colour: Nawkaw 'Diorite'
CON 01B	PRECAST CONCRETE TYPE 1, Colour: Nawkaw 'Hornblende'
CON 01C	PRECAST CONCRETE TYPE 1, Colour: Nawkaw 'Water Grey'
CON 02	PRECAST CONCRETE TYPE 2, Colour: Nawkaw 'Diorite'
<b>BRICKWORK / BLOCKWORK</b>	
BR 01	GLAZED BRICKWORK, Euroa Silver Black
<b>GLAZING</b>	
GZ 01	ALUMINIUM FRAMED GLAZING
<b>ROOFING</b>	
RF 01	COLORBOND PROFILED METAL SHEET, Colour: Windspray
RF 01A	PROFILED METAL SHEET, Colour: to match Kingspan 'Silver Coin'
RF 01B	PROFILED METAL SHEET, Colour: to match Kingspan 'Portico Grey'
<b>FENCE</b>	
FEN 01	(FENCE TO CAFE TERRACE)
<b>EXTERNAL PAINT</b>	
XP 01	EXTERNAL PAINT SYSTEM STEELWORK
XP 02	EXTERNAL PAINT SYSTEM DUCTWORK
<b>TIMBER</b>	
TIM 01	TIMBER SHADE STRUCTURE

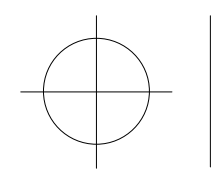
17.07.15	2	Revised Planning Drawings
04.06.15	1	Revised Town Planning Drawings
Date	No.	Amendment

Date	No.	Amendment
------	-----	-----------

Client  
**Manningham City Council**

Project  
**Mullum Mullum Reserve Highball Stadium**  
Springvale Road, Donvale, Victoria

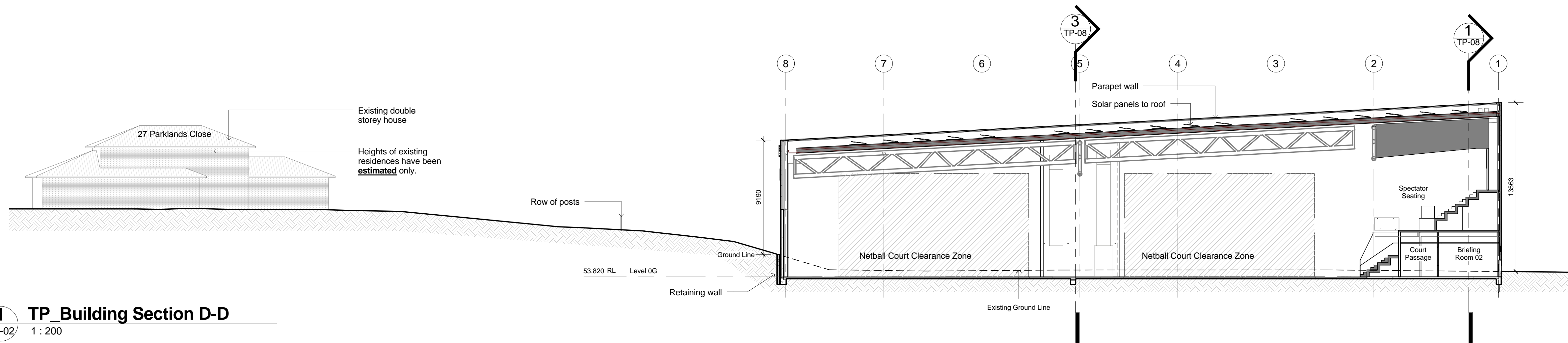
Drawing  
**Building Sections - Sheet 1**



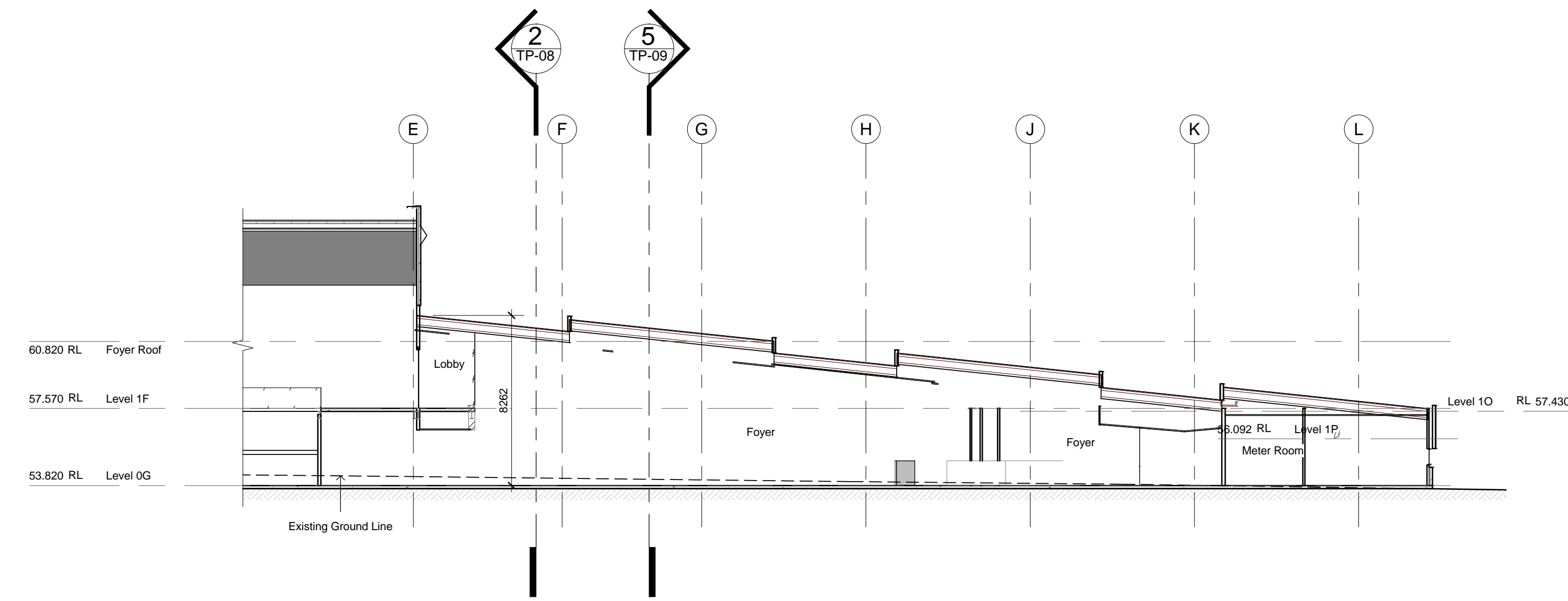
Date 24.07.14  
Drawn Author  
Scale 1 : 200

Project No.	Drawing No.	Revision
#272	TP-08	P2

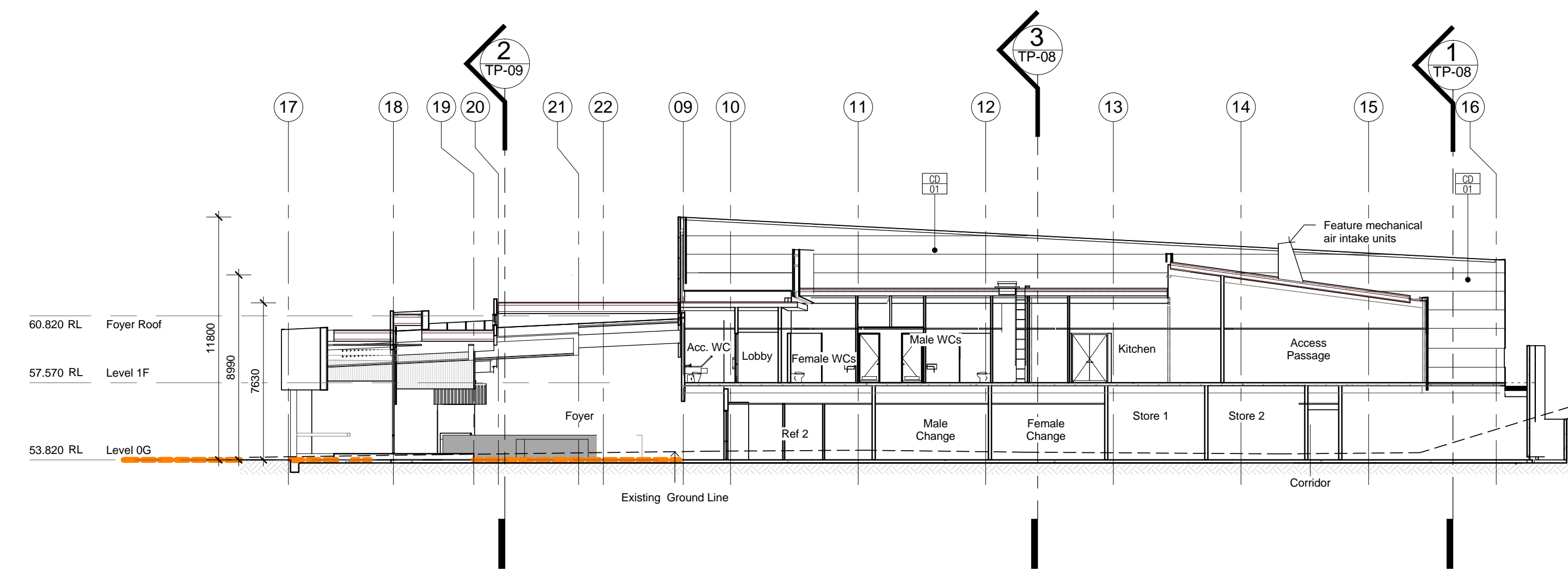




**1 TP Building Section D-D**  
PL-02 1 : 200



**2 TP Building Section E-E**  
SK-12 1 : 200



**5 TP Building Section H-H**  
PL-02 1 : 200

**LEGEND - External Finishes**

FINISH TYPE  
FINISH NUMBER

**CLADDING**

CD	01A	INSULATED PANELS TYPE 1. Colour: Kingspan 'Silver Coin'
CD	01B	INSULATED PANELS TYPE 1. Colour: Kingspan 'Silver Smith'
CD	01C	INSULATED PANELS TYPE 1. Colour: Kingspan 'Temple Gold'
CD	02A	INSULATED PANELS TYPE 2. Colour: Kingspan 'Silver Coin'
CD	02B	INSULATED PANELS TYPE 2. Colour: Universal Anodisers 'Doeskin'
CD	02C	INSULATED PANELS TYPE 2. Colour: Kingspan 'Temple Gold'
CD	03	INSULATED PANELS TYPE 3. Colour: Kingspan 'Silver Coin'
CD	04A	INSULATED PANELS TYPE 4. Colour: Kingspan 'Silver Coin'
CD	04B	INSULATED PANELS TYPE 4. Colour: Kingspan 'Silver Smith'
CD	04C	INSULATED PANELS TYPE 4. Colour: Kingspan 'Temple Gold'
CD	04D	INSULATED PANELS TYPE 4. Colour: Kingspan 'Portico Grey'
CD	05A	COMPOSITE CLADDING. Colour: Universal Anodisers 'Doeskin'
CD	05B	COMPOSITE CLADDING. Colour: Kingspan 'Silver Coin'
CD	06	PROFILED METAL SHEET. Colour: to match Kingspan 'Portico Grey'
CD	07	TRANSLUCENT SHEETS.

**CONCRETE**

CON	01A	PRECAST CONCRETE TYPE 1. Colour: Nawkaw 'Diorite'
CON	01B	PRECAST CONCRETE TYPE 1. Colour: Nawkaw 'Horriblende'
CON	01C	PRECAST CONCRETE TYPE 1. Colour: Nawkaw 'Water Grey'
CON	02	PRECAST CONCRETE TYPE 2. Colour: Nawkaw 'Diorite'

**BRICKWORK / BLOCKWORK**

BR	01	GLAZED BRICKWORK. Euro Silver Black
----	----	-------------------------------------

**GLAZING**

GZ	01	ALUMINIUM FRAMED GLAZING
----	----	--------------------------

**ROOFING**

RF	01	COLORBOND PROFILED METAL SHEET. Colour: Windspray
RF	01A	PROFILED METAL SHEET. Colour: to match Kingspan 'Silver Coin'
RF	01B	PROFILED METAL SHEET. Colour: to match Kingspan 'Portico Grey'

**FENCE**

FEN	01	(FENCE TO CAFE TERRACE)
-----	----	-------------------------

**EXTERNAL PAINT**

XP	01	EXTERNAL PAINT SYSTEM STEELWORK
XP	02	EXTERNAL PAINT SYSTEM DUCTWORK

**TIMBER**

TIM	01	TIMBER SHADE STRUCTURE
-----	----	------------------------