

ADVERTISED PLANS
DATE: / /

RECEIVED
18 JUL 2016
STATUTORY PLANNING OFFICE

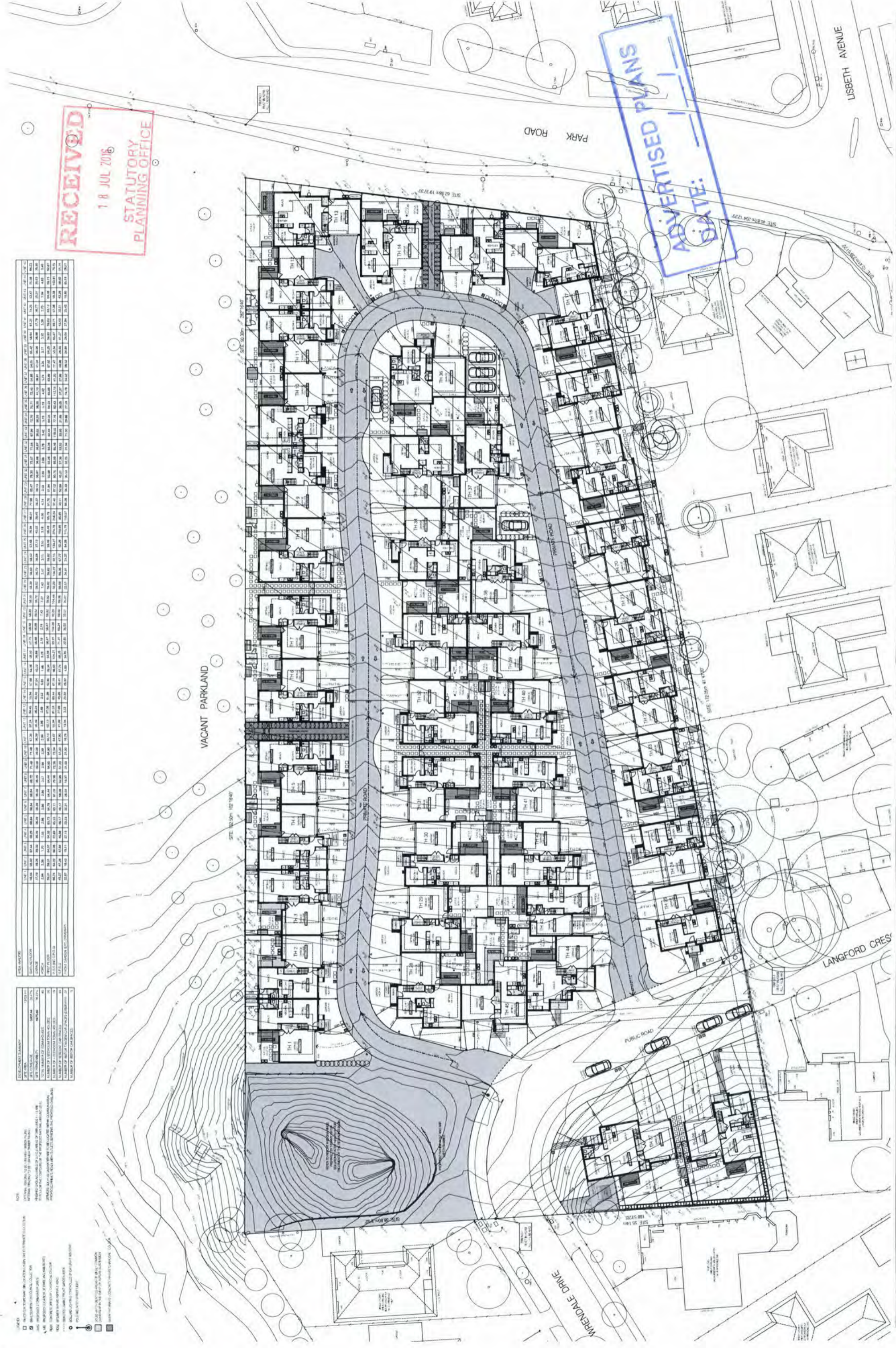
- SCHOOLS**
- 51 WESTVIEW PRIMARY SCHOOL (MILES 0.50)
 - 52 DONVALE PRIMARY SCHOOL (MILES 0.70)
 - 53 WESTVIEW PRIMARY SCHOOL (MILES 0.70)
 - 54 WESTVIEW PRIMARY SCHOOL (MILES 0.70)
 - 55 WESTVIEW PRIMARY SCHOOL (MILES 0.70)
 - 56 WESTVIEW PRIMARY SCHOOL (MILES 0.70)
 - 57 WESTVIEW PRIMARY SCHOOL (MILES 0.70)
 - 58 WESTVIEW PRIMARY SCHOOL (MILES 0.70)
 - 59 WESTVIEW PRIMARY SCHOOL (MILES 0.70)
 - 60 WESTVIEW PRIMARY SCHOOL (MILES 0.70)
- LOCAL SHOPS**
- 61 WESTVIEW PRIMARY SCHOOL (MILES 0.50)
 - 62 WESTVIEW PRIMARY SCHOOL (MILES 0.70)
 - 63 WESTVIEW PRIMARY SCHOOL (MILES 0.70)
 - 64 WESTVIEW PRIMARY SCHOOL (MILES 0.70)
 - 65 WESTVIEW PRIMARY SCHOOL (MILES 0.70)
 - 66 WESTVIEW PRIMARY SCHOOL (MILES 0.70)
 - 67 WESTVIEW PRIMARY SCHOOL (MILES 0.70)
 - 68 WESTVIEW PRIMARY SCHOOL (MILES 0.70)
 - 69 WESTVIEW PRIMARY SCHOOL (MILES 0.70)
 - 70 WESTVIEW PRIMARY SCHOOL (MILES 0.70)
- PUBLIC TRANSPORT**
- 71 WESTVIEW PRIMARY SCHOOL (MILES 0.50)
 - 72 WESTVIEW PRIMARY SCHOOL (MILES 0.70)
 - 73 WESTVIEW PRIMARY SCHOOL (MILES 0.70)
 - 74 WESTVIEW PRIMARY SCHOOL (MILES 0.70)
 - 75 WESTVIEW PRIMARY SCHOOL (MILES 0.70)
 - 76 WESTVIEW PRIMARY SCHOOL (MILES 0.70)
 - 77 WESTVIEW PRIMARY SCHOOL (MILES 0.70)
 - 78 WESTVIEW PRIMARY SCHOOL (MILES 0.70)
 - 79 WESTVIEW PRIMARY SCHOOL (MILES 0.70)
 - 80 WESTVIEW PRIMARY SCHOOL (MILES 0.70)
- TOPOGRAPHY OF LAND**
- 81 WESTVIEW PRIMARY SCHOOL (MILES 0.50)
 - 82 WESTVIEW PRIMARY SCHOOL (MILES 0.70)
 - 83 WESTVIEW PRIMARY SCHOOL (MILES 0.70)
 - 84 WESTVIEW PRIMARY SCHOOL (MILES 0.70)
 - 85 WESTVIEW PRIMARY SCHOOL (MILES 0.70)
 - 86 WESTVIEW PRIMARY SCHOOL (MILES 0.70)
 - 87 WESTVIEW PRIMARY SCHOOL (MILES 0.70)
 - 88 WESTVIEW PRIMARY SCHOOL (MILES 0.70)
 - 89 WESTVIEW PRIMARY SCHOOL (MILES 0.70)
 - 90 WESTVIEW PRIMARY SCHOOL (MILES 0.70)
- SECLUDED OPEN SPACE & HABITABLE ROOM WINDOWS**
- 91 WESTVIEW PRIMARY SCHOOL (MILES 0.50)
 - 92 WESTVIEW PRIMARY SCHOOL (MILES 0.70)
 - 93 WESTVIEW PRIMARY SCHOOL (MILES 0.70)
 - 94 WESTVIEW PRIMARY SCHOOL (MILES 0.70)
 - 95 WESTVIEW PRIMARY SCHOOL (MILES 0.70)
 - 96 WESTVIEW PRIMARY SCHOOL (MILES 0.70)
 - 97 WESTVIEW PRIMARY SCHOOL (MILES 0.70)
 - 98 WESTVIEW PRIMARY SCHOOL (MILES 0.70)
 - 99 WESTVIEW PRIMARY SCHOOL (MILES 0.70)
 - 100 WESTVIEW PRIMARY SCHOOL (MILES 0.70)
- NEARBY PUBLIC OPEN SPACE**
- 101 WESTVIEW PRIMARY SCHOOL (MILES 0.50)
 - 102 WESTVIEW PRIMARY SCHOOL (MILES 0.70)
 - 103 WESTVIEW PRIMARY SCHOOL (MILES 0.70)
 - 104 WESTVIEW PRIMARY SCHOOL (MILES 0.70)
 - 105 WESTVIEW PRIMARY SCHOOL (MILES 0.70)
 - 106 WESTVIEW PRIMARY SCHOOL (MILES 0.70)
 - 107 WESTVIEW PRIMARY SCHOOL (MILES 0.70)
 - 108 WESTVIEW PRIMARY SCHOOL (MILES 0.70)
 - 109 WESTVIEW PRIMARY SCHOOL (MILES 0.70)
 - 110 WESTVIEW PRIMARY SCHOOL (MILES 0.70)

- FENCE BOUNDARIES AND EASEMENTS**
- 111 WESTVIEW PRIMARY SCHOOL (MILES 0.50)
 - 112 WESTVIEW PRIMARY SCHOOL (MILES 0.70)
 - 113 WESTVIEW PRIMARY SCHOOL (MILES 0.70)
 - 114 WESTVIEW PRIMARY SCHOOL (MILES 0.70)
 - 115 WESTVIEW PRIMARY SCHOOL (MILES 0.70)
 - 116 WESTVIEW PRIMARY SCHOOL (MILES 0.70)
 - 117 WESTVIEW PRIMARY SCHOOL (MILES 0.70)
 - 118 WESTVIEW PRIMARY SCHOOL (MILES 0.70)
 - 119 WESTVIEW PRIMARY SCHOOL (MILES 0.70)
 - 120 WESTVIEW PRIMARY SCHOOL (MILES 0.70)
- LOCATION/USE OF SURROUNDING BUILDINGS**
- 121 WESTVIEW PRIMARY SCHOOL (MILES 0.50)
 - 122 WESTVIEW PRIMARY SCHOOL (MILES 0.70)
 - 123 WESTVIEW PRIMARY SCHOOL (MILES 0.70)
 - 124 WESTVIEW PRIMARY SCHOOL (MILES 0.70)
 - 125 WESTVIEW PRIMARY SCHOOL (MILES 0.70)
 - 126 WESTVIEW PRIMARY SCHOOL (MILES 0.70)
 - 127 WESTVIEW PRIMARY SCHOOL (MILES 0.70)
 - 128 WESTVIEW PRIMARY SCHOOL (MILES 0.70)
 - 129 WESTVIEW PRIMARY SCHOOL (MILES 0.70)
 - 130 WESTVIEW PRIMARY SCHOOL (MILES 0.70)
- ORIENTATION AND SLOPE**
- 131 WESTVIEW PRIMARY SCHOOL (MILES 0.50)
 - 132 WESTVIEW PRIMARY SCHOOL (MILES 0.70)
 - 133 WESTVIEW PRIMARY SCHOOL (MILES 0.70)
 - 134 WESTVIEW PRIMARY SCHOOL (MILES 0.70)
 - 135 WESTVIEW PRIMARY SCHOOL (MILES 0.70)
 - 136 WESTVIEW PRIMARY SCHOOL (MILES 0.70)
 - 137 WESTVIEW PRIMARY SCHOOL (MILES 0.70)
 - 138 WESTVIEW PRIMARY SCHOOL (MILES 0.70)
 - 139 WESTVIEW PRIMARY SCHOOL (MILES 0.70)
 - 140 WESTVIEW PRIMARY SCHOOL (MILES 0.70)
- VEGETATION AND ACCESS**
- 141 WESTVIEW PRIMARY SCHOOL (MILES 0.50)
 - 142 WESTVIEW PRIMARY SCHOOL (MILES 0.70)
 - 143 WESTVIEW PRIMARY SCHOOL (MILES 0.70)
 - 144 WESTVIEW PRIMARY SCHOOL (MILES 0.70)
 - 145 WESTVIEW PRIMARY SCHOOL (MILES 0.70)
 - 146 WESTVIEW PRIMARY SCHOOL (MILES 0.70)
 - 147 WESTVIEW PRIMARY SCHOOL (MILES 0.70)
 - 148 WESTVIEW PRIMARY SCHOOL (MILES 0.70)
 - 149 WESTVIEW PRIMARY SCHOOL (MILES 0.70)
 - 150 WESTVIEW PRIMARY SCHOOL (MILES 0.70)
- DRAINAGE AND SERVICES**
- 151 WESTVIEW PRIMARY SCHOOL (MILES 0.50)
 - 152 WESTVIEW PRIMARY SCHOOL (MILES 0.70)
 - 153 WESTVIEW PRIMARY SCHOOL (MILES 0.70)
 - 154 WESTVIEW PRIMARY SCHOOL (MILES 0.70)
 - 155 WESTVIEW PRIMARY SCHOOL (MILES 0.70)
 - 156 WESTVIEW PRIMARY SCHOOL (MILES 0.70)
 - 157 WESTVIEW PRIMARY SCHOOL (MILES 0.70)
 - 158 WESTVIEW PRIMARY SCHOOL (MILES 0.70)
 - 159 WESTVIEW PRIMARY SCHOOL (MILES 0.70)
 - 160 WESTVIEW PRIMARY SCHOOL (MILES 0.70)

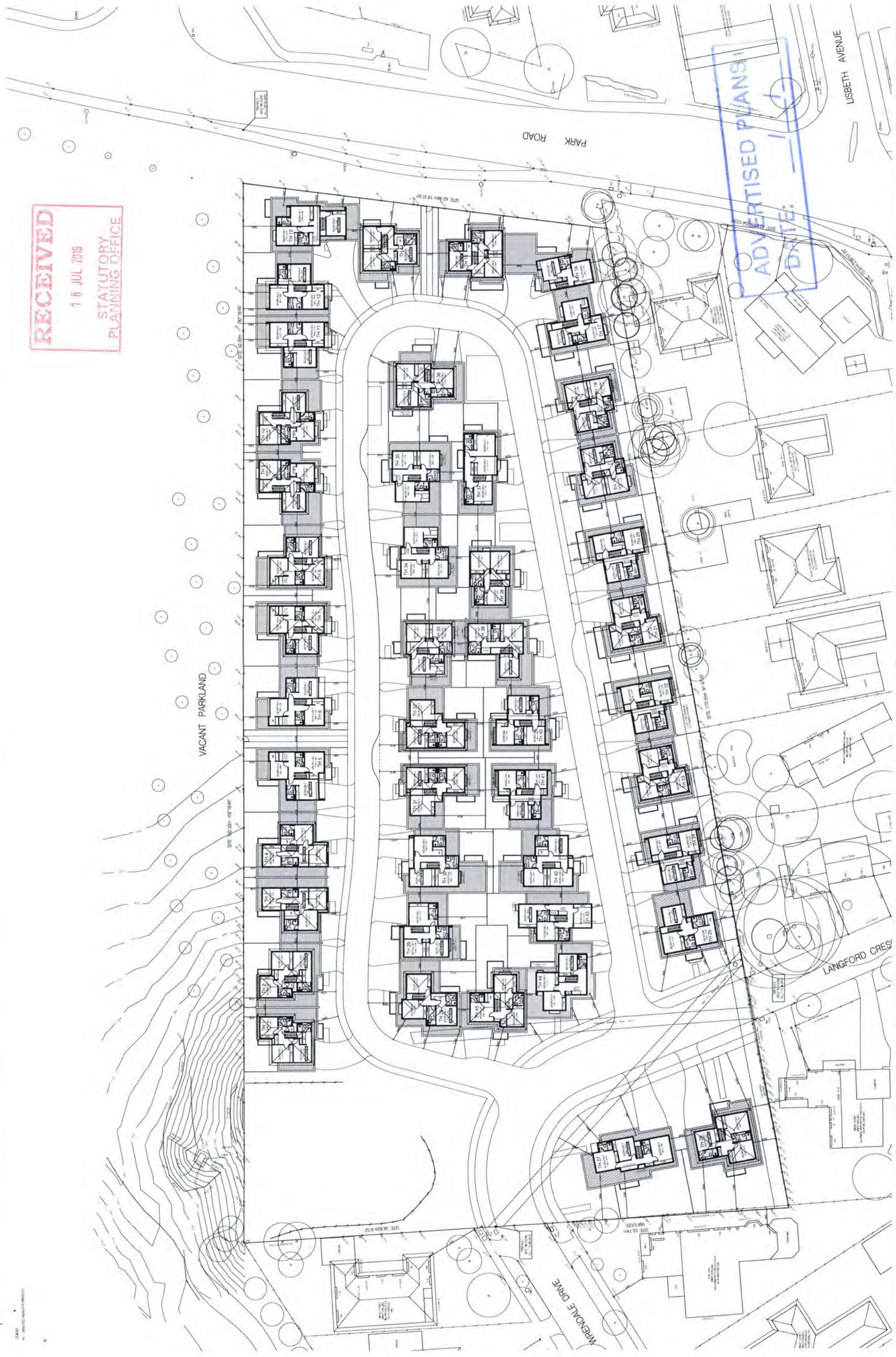
NO.	DESCRIPTION	UNIT	AREA	PRICE	TOTAL	DATE	BY
1	CONTRACTOR'S BANKING						
2	CONTRACTOR'S BANKING						
3	CONTRACTOR'S BANKING						
4	CONTRACTOR'S BANKING						
5	CONTRACTOR'S BANKING						
6	CONTRACTOR'S BANKING						
7	CONTRACTOR'S BANKING						
8	CONTRACTOR'S BANKING						
9	CONTRACTOR'S BANKING						
10	CONTRACTOR'S BANKING						
11	CONTRACTOR'S BANKING						
12	CONTRACTOR'S BANKING						
13	CONTRACTOR'S BANKING						
14	CONTRACTOR'S BANKING						
15	CONTRACTOR'S BANKING						
16	CONTRACTOR'S BANKING						
17	CONTRACTOR'S BANKING						
18	CONTRACTOR'S BANKING						
19	CONTRACTOR'S BANKING						
20	CONTRACTOR'S BANKING						
21	CONTRACTOR'S BANKING						
22	CONTRACTOR'S BANKING						
23	CONTRACTOR'S BANKING						
24	CONTRACTOR'S BANKING						
25	CONTRACTOR'S BANKING						
26	CONTRACTOR'S BANKING						
27	CONTRACTOR'S BANKING						
28	CONTRACTOR'S BANKING						
29	CONTRACTOR'S BANKING						
30	CONTRACTOR'S BANKING						
31	CONTRACTOR'S BANKING						
32	CONTRACTOR'S BANKING						
33	CONTRACTOR'S BANKING						
34	CONTRACTOR'S BANKING						
35	CONTRACTOR'S BANKING						
36	CONTRACTOR'S BANKING						
37	CONTRACTOR'S BANKING						
38	CONTRACTOR'S BANKING						
39	CONTRACTOR'S BANKING						
40	CONTRACTOR'S BANKING						
41	CONTRACTOR'S BANKING						
42	CONTRACTOR'S BANKING						
43	CONTRACTOR'S BANKING						
44	CONTRACTOR'S BANKING						
45	CONTRACTOR'S BANKING						
46	CONTRACTOR'S BANKING						
47	CONTRACTOR'S BANKING						
48	CONTRACTOR'S BANKING						
49	CONTRACTOR'S BANKING						
50	CONTRACTOR'S BANKING						
51	CONTRACTOR'S BANKING						
52	CONTRACTOR'S BANKING						
53	CONTRACTOR'S BANKING						
54	CONTRACTOR'S BANKING						
55	CONTRACTOR'S BANKING						
56	CONTRACTOR'S BANKING						
57	CONTRACTOR'S BANKING						
58	CONTRACTOR'S BANKING						
59	CONTRACTOR'S BANKING						
60	CONTRACTOR'S BANKING						
61	CONTRACTOR'S BANKING						
62	CONTRACTOR'S BANKING						
63	CONTRACTOR'S BANKING						
64	CONTRACTOR'S BANKING						
65	CONTRACTOR'S BANKING						
66	CONTRACTOR'S BANKING						
67	CONTRACTOR'S BANKING						
68	CONTRACTOR'S BANKING						
69	CONTRACTOR'S BANKING						
70	CONTRACTOR'S BANKING						
71	CONTRACTOR'S BANKING						
72	CONTRACTOR'S BANKING						
73	CONTRACTOR'S BANKING						
74	CONTRACTOR'S BANKING						
75	CONTRACTOR'S BANKING						
76	CONTRACTOR'S BANKING						
77	CONTRACTOR'S BANKING						
78	CONTRACTOR'S BANKING						
79	CONTRACTOR'S BANKING						
80	CONTRACTOR'S BANKING						
81	CONTRACTOR'S BANKING						
82	CONTRACTOR'S BANKING						
83	CONTRACTOR'S BANKING						
84	CONTRACTOR'S BANKING						
85	CONTRACTOR'S BANKING						
86	CONTRACTOR'S BANKING						
87	CONTRACTOR'S BANKING						
88	CONTRACTOR'S BANKING						
89	CONTRACTOR'S BANKING						
90	CONTRACTOR'S BANKING						
91	CONTRACTOR'S BANKING						
92	CONTRACTOR'S BANKING						
93	CONTRACTOR'S BANKING						
94	CONTRACTOR'S BANKING						
95	CONTRACTOR'S BANKING						
96	CONTRACTOR'S BANKING						
97	CONTRACTOR'S BANKING						
98	CONTRACTOR'S BANKING						
99	CONTRACTOR'S BANKING						
100	CONTRACTOR'S BANKING						

RECEIVED
18 JUL 2016
STATUTORY
PLANNING OFFICE

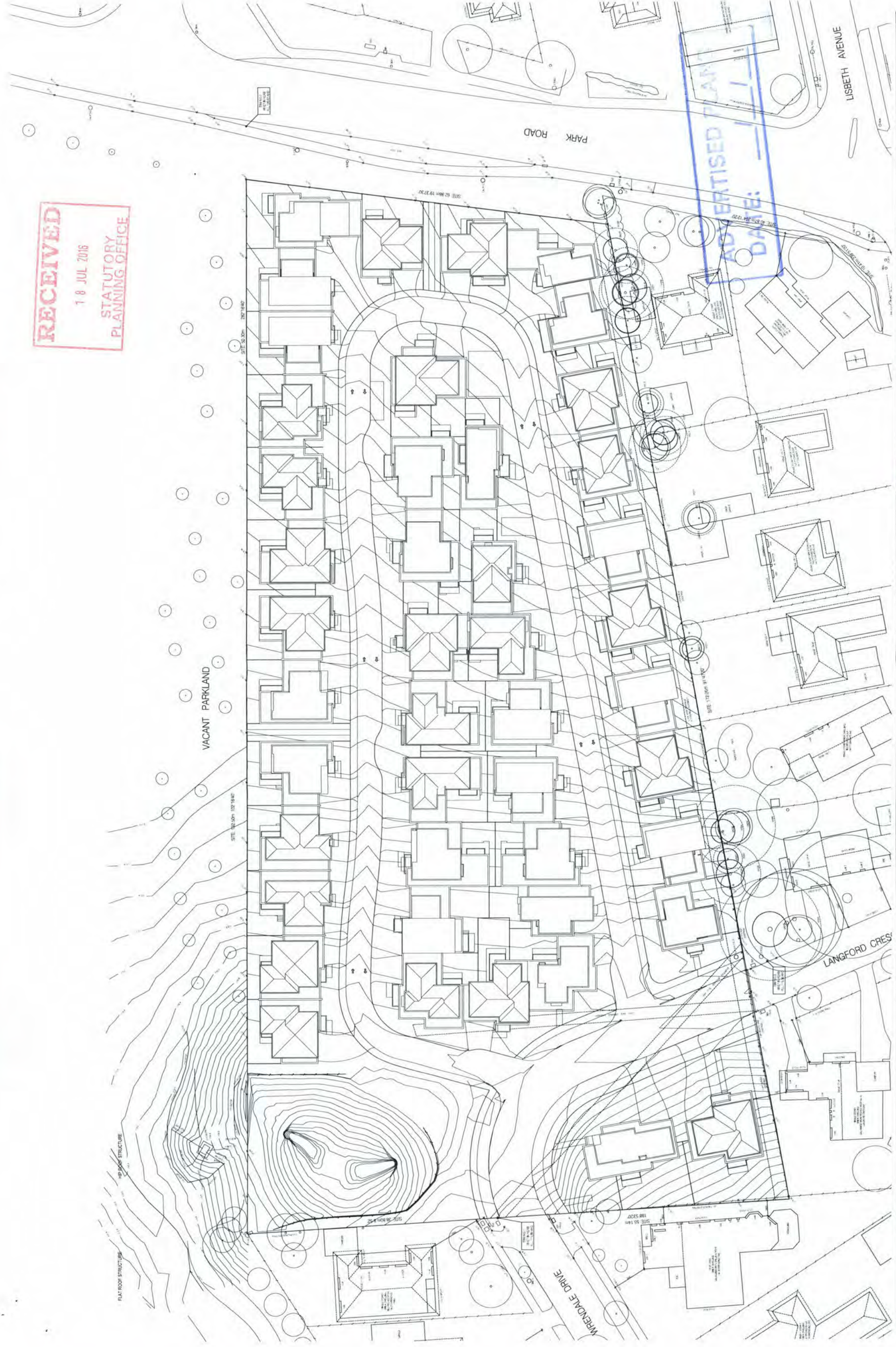
ADVERTISED PLANS
DATE: _____



RECEIVED
18 JUL 2016
STATUTORY
PLANNING OFFICE



RECEIVED
18 JUL 2016
STATUTORY
PLANNING OFFICE



PROJECT: RESIDENTIAL DEVELOPMENT
25 - 29 PARK ROAD
DONVALE VIC 3111

DATE: JULY 2016

SCALE: 1:200 @ A0 1:400 @ A2

PROJECT NO: 14-09 V.G.

TOWN PLANNING ISSUE

NO. OF SHEETS: 15

SHEET NO: 15

DATE: 1/7/16

PROJECT: RESIDENTIAL DEVELOPMENT
25 - 29 PARK ROAD
DONVALE VIC 3111

DATE: JULY 2016

SCALE: 1:200 @ A0 1:400 @ A2

PROJECT NO: 14-09 V.G.

TOWN PLANNING ISSUE

NO. OF SHEETS: 15

SHEET NO: 15

DATE: 1/7/16

TAOUK ARCHITECTS
414 BARRACLOUGH STREET, MELBOURNE VIC 3004
TEL: 03 9412 1234
WWW.TAOUKARCHITECTS.COM.AU



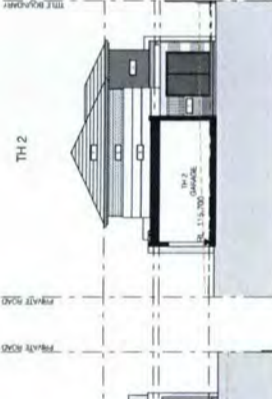
PRIVATE ROAD [NORTH] - SOUTH ELEVATION [TOWNHOUSE: 1-13]



TH 1 - INT EAST ELEVATION



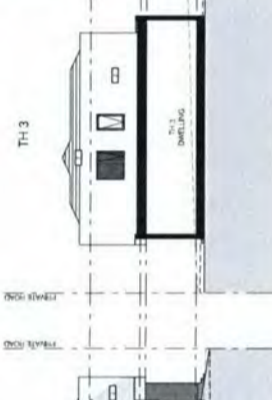
TH 2 - INT WEST ELEVATION



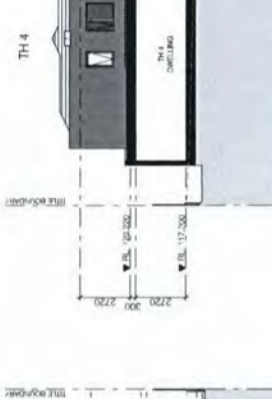
TH 2 - INT EAST ELEVATION



TH 3 - INT WEST ELEVATION



TH 3 - INT EAST ELEVATION



TH 4 - INT WEST ELEVATION



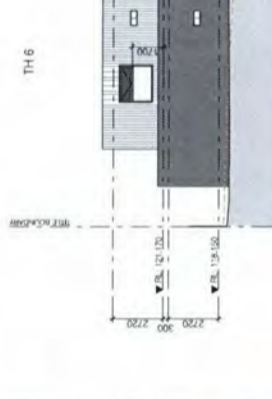
TH 4 - INT EAST ELEVATION



TH 5 - INT WEST ELEVATION



TH 5 - INT EAST ELEVATION



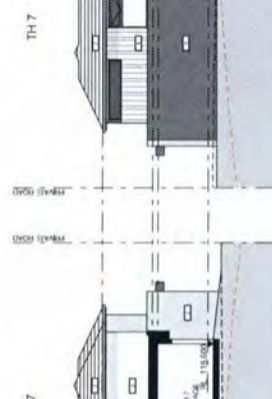
TH 6 - INT WEST ELEVATION



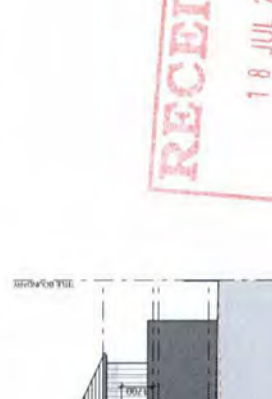
TH 6 - INT EAST ELEVATION



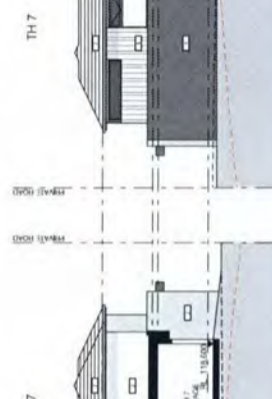
TH 7 - INT WEST ELEVATION



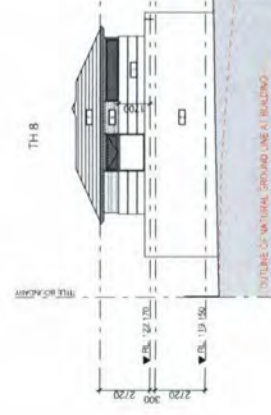
TH 7 - INT EAST ELEVATION



TH 10 - INT WEST ELEVATION



TH 10 - INT EAST ELEVATION



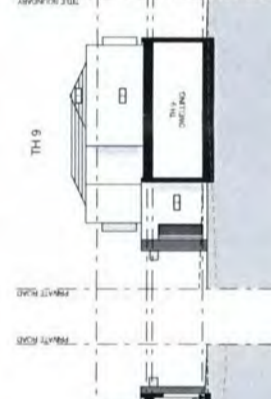
TH 8 - INT WEST ELEVATION



TH 8 - INT EAST ELEVATION



TH 9 - INT WEST ELEVATION



TH 9 - INT EAST ELEVATION



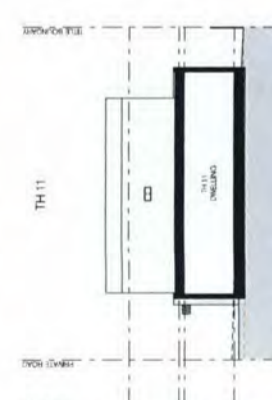
TH 10 - INT WEST ELEVATION



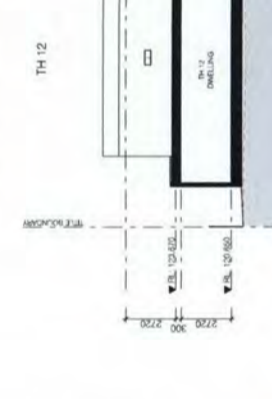
TH 10 - INT EAST ELEVATION



TH 11 - INT WEST ELEVATION



TH 11 - INT EAST ELEVATION



TH 12 - INT WEST ELEVATION



TH 12 - INT EAST ELEVATION

MATERIALS AND FINISHES SCHEDULE

1. FACE BRICKWORK
2. CONCRETE RENDER
3. CONCRETE RENDER
4. CONCRETE RENDER
5. INFLY PANEL
6. TIMBER CLADDING
7. ROOF
8. WINDOW FRAMES
9. DOOR FRAMES
10. GUTTER/FASCIA/S DOWNPIPES
11. GARAGE DOOR
12. SECTIONAL PANEL LIFT

PGH - BLUE STEEL FLASH*

DULUX COLOUR SPECIFIER - POWERS 'WHITE ON WHITE'

DULUX COLOUR SPECIFIER - POWERS 'LOADED OMP'

DULUX COLOUR SPECIFIER - POWERS 'PODGY TANK'

DULUX COLOUR SPECIFIER - POWERS 'MONUMENT'

SPOTTED OIL - NATURAL STAIN FINISH

HONEYFLAT PROFILE CONCRETE TILES - HORIZON 'SAMBALUK'

ALUMINIUM FRAME - DULUX COLOUR SPECIFIER - 'MONUMENT'

TIMBER FRAME - DULUX COLOUR SPECIFIER - 'CRUZ' MONUMENT*

COLORBOND STEEL - 'WOODLAND GREY'

SECTIONAL PANEL LIFT - 'COLORBOND STEEL' 'WOODLAND GREY'

SECTIONAL PANEL LIFT - 'COLORBOND STEEL' 'WOODSPRAY'

RECEIVED
18 JUL 2016
STATUTORY PLANNING OFFICE

ADVERTISED PLANS
DATE: / /

REVISION
REV A

CHANGES MADE IN RESPONSE TO COUNCIL RP LETTER DATED 19/07/2016

PROJECT
RESIDENTIAL DEVELOPMENT
25 - 29 PARK ROAD
DONVALE VIC 3111

CLIENT
DONVALE GARDEN ESTATE

DRAWING TITLE
EL - PRIVATE RD [NORTH]

SCALE
1:200 @ A1 1:400 @ A3

JOB No.
14-09

DRAWN
V.G.

DATE
JULY 2016

DRAWING No.
TPA07

OF
15

REVISION
A

TAOUKARCHITECTS
448 HEIDELBERG ROAD FAIRFIELD VIC 3078
PH: 03 9450 1234
WWW.TAOUKARCHITECTS.COM.AU

PROJECT
RESIDENTIAL DEVELOPMENT
25 - 29 PARK ROAD
DONVALE VIC 3111

CLIENT
DONVALE GARDEN ESTATE

DRAWING TITLE
EL - PRIVATE RD [NORTH]

SCALE
1:200 @ A1 1:400 @ A3

JOB No.
14-09

DRAWN
V.G.

DATE
JULY 2016

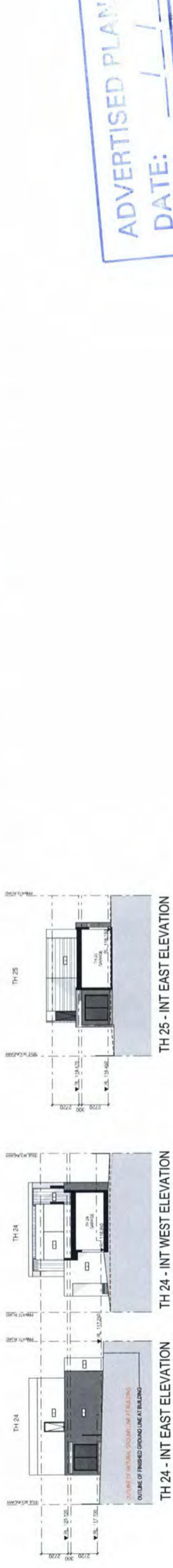
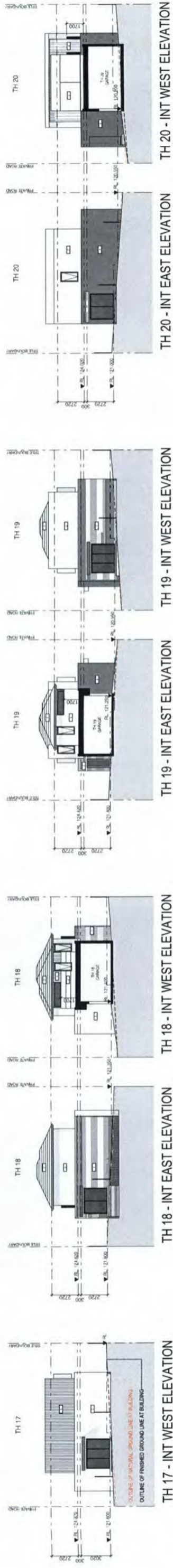
DRAWING No.
TPA07

OF
15

REVISION
A



PRIVATE ROAD [SOUTH] - NORTH ELEVATION [TOWNHOUSE: 16-25]



MATERIALS AND FINISHES SCHEDULE

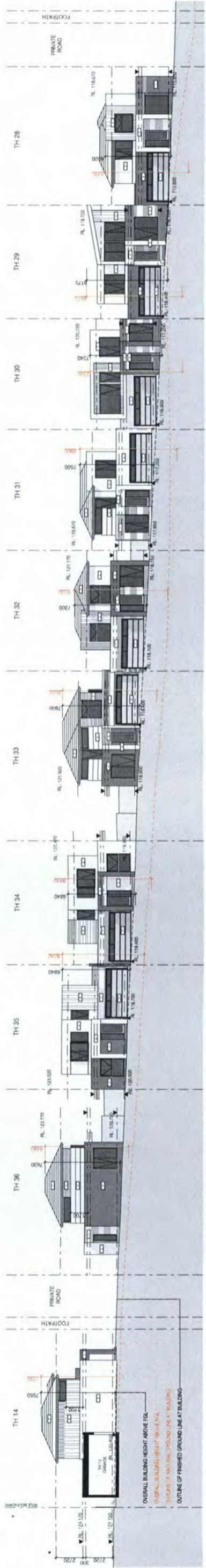
1. FACE BRICKWORK
2. CONCRETE RENDER
3. CONCRETE RENDER
4. CONCRETE RENDER
5. SPILL PANEL
6. TIMBER CLADDING
7. ROOF
8. WINDOW FRAMES
9. DOOR FRAMES
10. GUTTERS, FASCIAS & DOWNPIPPES
11. GARAGE DOOR
12. GARAGE DOOR

P01 - BLUE STEEL FLASH
 DULUX COLOUR SPECIFIER - POWERS 'WHITE ON WHITE'
 DULUX COLOUR SPECIFIER - POCKET 'LOOSD GMP'
 DULUX COLOUR SPECIFIER - POCKET 'TUMK'
 DULUX COLOUR SPECIFIER - COLOURING 'MONUMENT'
 SPOTTED GIM - NATURAL STAIN FINISH
 MONOFAT PROFILE CONCRETE TILES - HORIZON 'SAMBUC'
 ALUMINIUM FRAME - DULUX COLOUR SPECIFIER - 'COL J2 MONUMENT'
 TIMBER FRAME - DULUX COLOUR SPECIFIER - 'COL J2 MONUMENT'
 COLORBOND STEEL - 'WOODLAND GREY'
 SECTIONAL PANEL LIFT - COLORBOND STEEL - 'WOODLAND GREY'
 SECTIONAL PANEL LIFT - COLORBOND STEEL - 'WINDSPRAY'

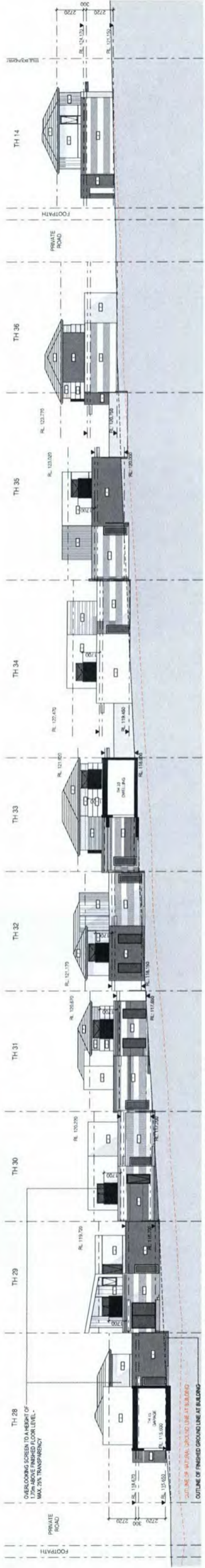
ADVERTISED PLANS
DATE: / /

RECEIVED
18 JUL 2016
STATUTORY PLANNING OFFICE

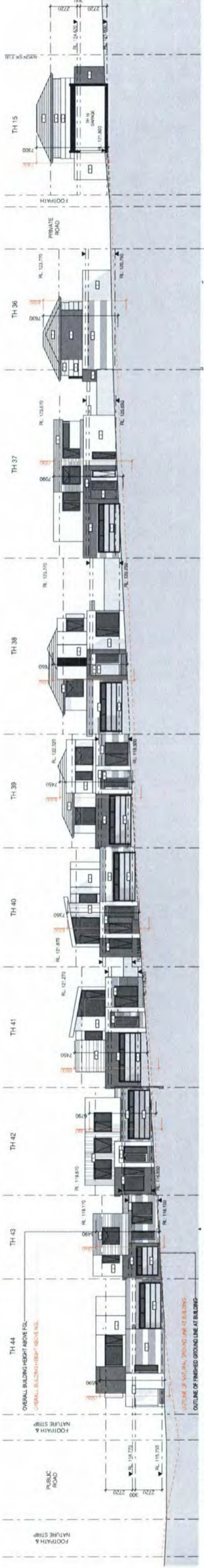




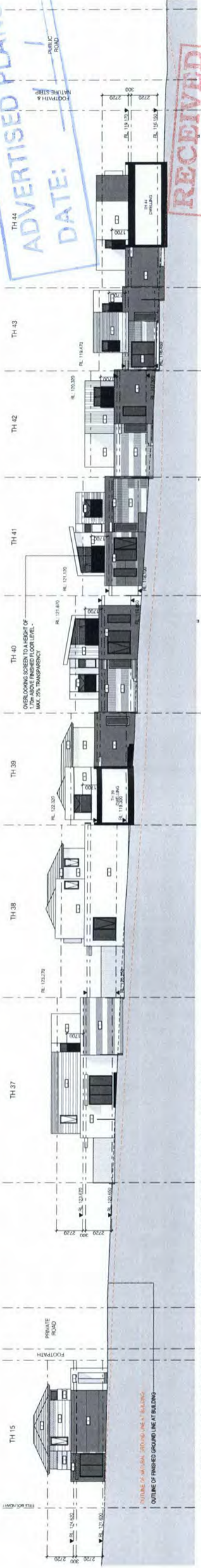
PRIVATE ROAD [MID SECTION] - NORTH ELEVATION [TOWNHOUSE: 14 & 28-36]



PRIVATE ROAD [MID SECTION] - INT SOUTH ELEVATION [TOWNHOUSE: 14 & 28-36]



PRIVATE ROAD [MID SECTION] - SOUTH ELEVATION [TOWNHOUSE: 15 & 36-44]



PRIVATE ROAD [MID SECTION] - INT NORTH ELEVATION [TOWNHOUSE: 15 & 37-44]

MATERIALS AND FINISHES SCHEDULE

- 1. FACE BRICKWORK - PGH - BLUE STEEL FLASH
- 2. CONCRETE RENDER - DELUX COLOUR SPECIFIER - POWERS WHITE ON WHITE
- 3. CONCRETE RENDER - DELUX COLOUR SPECIFIER - POWERS FLOORED GUM
- 4. CONCRETE RENDER - DELUX COLOUR SPECIFIER - POWERS WHITE ON WHITE
- 5. INTELL PANEL - DELUX COLOUR SPECIFIER - COLORBOND MONUMENT
- 6. TIMBER CLADDING - SPOTTED GUM - NATURAL STAIN FINISH
- 7. ROOF - MONIER FLAT PROFILE CONCRETE TILES - HORDON 'SAMBICA'
- 8. WINDOW FRAMES - ALUMINUM FRAME - DELUX POWDERCOATINGS - 'MONUMENT'
- 9. DOOR FRAMES - TIMBER FRAME - DELUX COLOR SPECIFIER - 'GLD' MONUMENT
- 10. GUTTERS, FASCIAS & DOWNPIPES - COLORBOND STEEL - 'WOODLAND GREY'
- 11. GARAGE DOOR - SECTIONAL PANEL LIFT - COLORBOND STEEL - 'WOODLAND GREY'
- 12. GARAGE DOOR - SECTIONAL PANEL LIFT - COLORBOND STEEL - 'WINDSPRAY'

CHANGES MADE IN RESPONSE TO COUNCIL REF LETTER DATED 18/07/2016

REVISION REV A

ADVERTISED PLANS
DATE: / /

RECEIVED
18 JUL 2016
STATUTORY PLANNING OFFICE

DRAWING TITLE: EL. - PRIVATE RD [MID SECTION]
 SCALE: 1:200 @ A1 1:400 @ A3
 DATE: JULY 2016
 DRAWING No: TPA09 OF 15
 TOWN PLANNING ISSUE
 JOB No: 14-09 V.G.
 PROJECT: RESIDENTIAL DEVELOPMENT
 25 - 29 PARK ROAD
 DONVALE VIC 3111
 CLIENT: DONVALE GARDEN ESTATE
 PROJECT: RESIDENTIAL DEVELOPMENT
 25 - 29 PARK ROAD
 DONVALE VIC 3111
 TAOUKARCHITECTS
 448 HEIDELBERG ROAD FAIRFIELD VIC 3078
 PH: 03 9488 6000
 WWW.TAOUKARCHITECTS.COM.AU
 TOWN PLANNING ISSUE
 DRAWN: V.G.
 DATE: 14-09
 REVISION: A



PRIVATE ROAD [EAST] - WEST ELEVATION [TOWNHOUSE: 13-16]

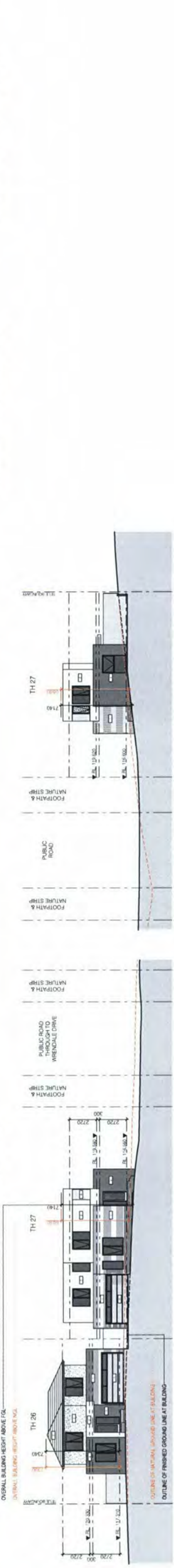
PRIVATE ROAD [EAST] - EAST ELEVATION [TOWNHOUSE: 12, 17 & 36]



PUBLIC ROAD - WEST ELEVATION [TOWNHOUSE: 1, 25, 28, 44 & 45]

TH 45 - INT NORTH ELEVATION

TH 45 - INT SOUTH ELEVATION



PUBLIC ROAD - EAST ELEVATION [TOWNHOUSE: 26 & 27]

PUBLIC ROAD - NORTH ELEVATION [TOWNHOUSE: 27]



TH 26 - INT NORTH ELEVATION

TH 27 - INT SOUTH ELEVATION

MATERIALS AND FINISHES SCHEDULE

1. FACE BRICKWORK - POH - BLUE STEEL FLASH
2. CONCRETE RENDER - DALLUS COLOUR SPECIFIER - POWR WHITE ON WHITE
3. CONCRETE RENDER - DALLUS COLOUR SPECIFIER - FOGGY FLOODED GUM
4. CONCRETE RENDER - DALLUS COLOUR SPECIFIER - FOGGY TRAKZ
5. WALL PANEL - DALLUS COLOUR SPECIFIER - COLORBOND MONUMENT
6. SPOTTED GUM - NATURAL STAIN FINISH
7. TRIMER CLADDING
8. ROOF - MONER F44 PROFILE CONCRETE TILES - HORIZON 'SAMBACA'
9. WINDOW FRAMES - ALUMINUM FRAME - DALLUS POWDERCOATINGS - 'MONUMENT'
10. DOOR FRAMES - TRIMER FRAME - DALLUS COLOUR SPECIFIER - 'GIL'D' MONUMENT
11. GUTTERS, FASCIAS & DOWNPIPES - COLORBOND STEEL - 'WOODLAND GREY'
12. GARAGE DOOR - SECTIONAL PANEL LIFT - COLORBOND STEEL - 'WOODSPRAY'

ADVERTISED PLANS
DATE: / /

RECEIVED
18 JUL 2016
STATUTORY PLANNING OFFICE

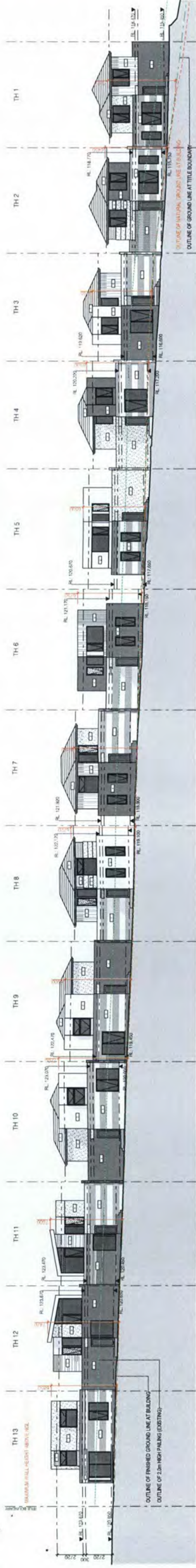
REVISION
REV A CHANGES MADE IN RESPONSE TO COUNCIL RP1 LETTER DATED 19/01/2016

TAOUKARCHITECTS
448 HEIDELBERG ROAD FAIRFIELD VIC 3078
03 9465 8800
info@taoukarchitects.com.au www.taoukarchitects.com.au

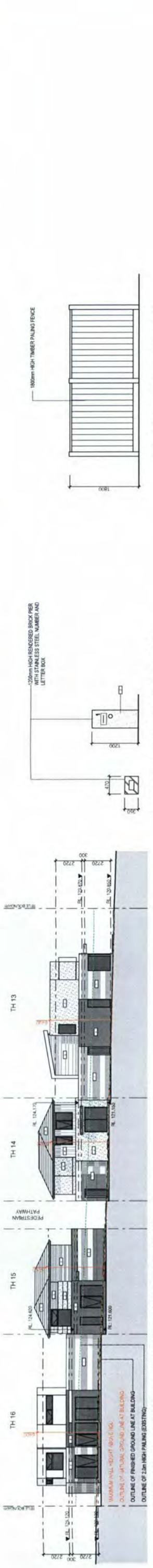
PROJECT
RESIDENTIAL DEVELOPEMENT
25 - 29 PARK ROAD
DONVALE VIC 3111
CLIENT
DONVALE GARDEN ESTATE

DRAWING TITLE
EL. - PRIVATE RD & PUBLIC RD
SCALE
1:200 @ A1 1:400 @ A3
DATE
JULY 2016
JOB No.
14-09 V.G.
DRAWN
DRAWING NO.
TPA11 OF 15

TOWN PLANNING ISSUE
REVISION
A



BOUNDARY - NORTH ELEVATION [TOWNHOUSE: 1-13]



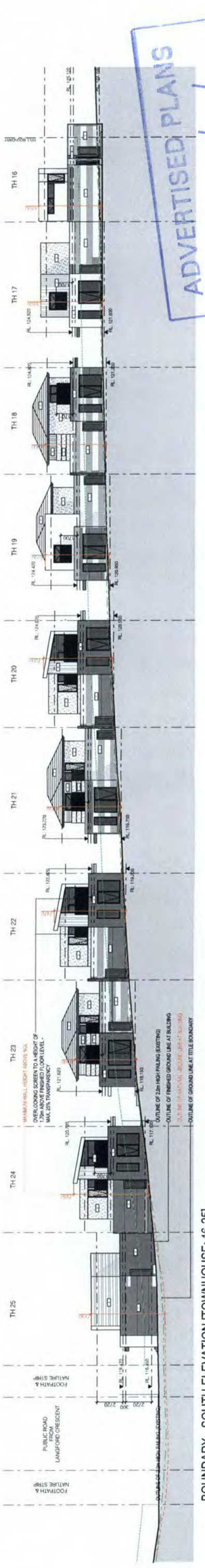
BOUNDARY - EAST ELEVATION [TOWNHOUSE: 13-16]



BOUNDARY - WEST ELEVATION [TOWNHOUSE: 26 & 27]



BOUNDARY - SOUTH ELEVATION [TOWNHOUSE: 25 & 26]



BOUNDARY - SOUTH ELEVATION [TOWNHOUSE: 16-25]

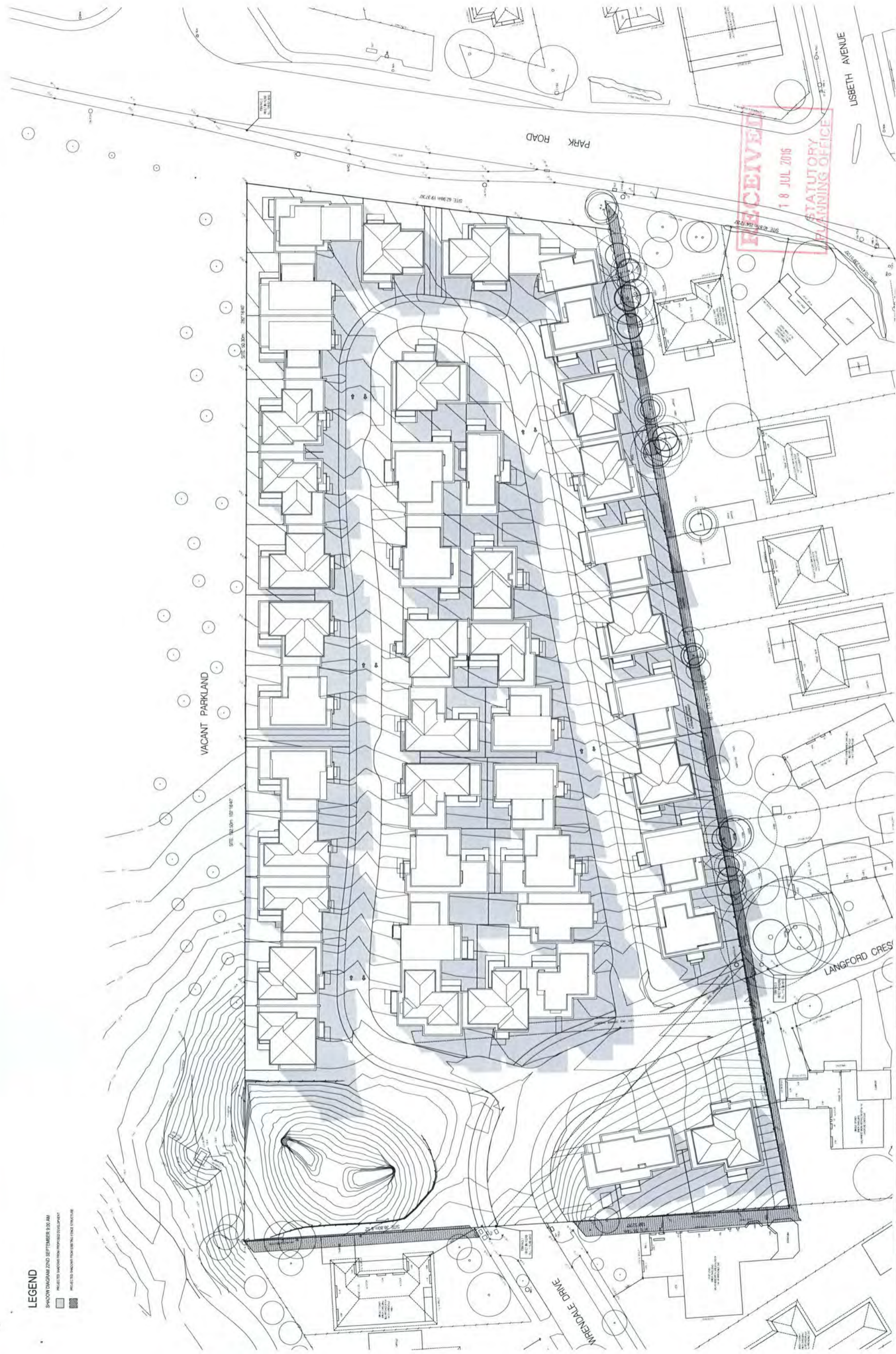
RECEIVED
 18 JUL 2016
 STATUTORY PLANNING OFFICE

ADVERTISED PLANS
 DATE: / /



LEGEND

- SHADOW DIAGRAM 22ND SEPTEMBER 9:30 AM
- PROJECTED SHADOWS FROM PROPOSED DEVELOPMENT
- PROJECTED SHADOWS FROM EXISTING STRUCTURE



LEGEND

SHADOW DIAGRAM 2ND SEPTEMBER 12:00 PM

- PROJECTED SHADOWS FROM PROPOSED DEVELOPMENT
- PROJECTED SHADOWS FROM EXISTING STRUCTURE

VACANT PARKLAND

SITE 102 20m x 100' 16407

SITE 62 20m x 287' 16407

SITE 82 20m x 19' 37307

SITE 38 20m x 25'

SITE 55 18m x 180' 52007

SITE 112 20m x 181m

SITE 212 20m x 181m

SITE 312 20m x 181m

SITE 412 20m x 181m

SITE 512 20m x 181m

SITE 612 20m x 181m

SITE 712 20m x 181m

SITE 812 20m x 181m

SITE 912 20m x 181m

SITE 1012 20m x 181m

SITE 1112 20m x 181m

SITE 1212 20m x 181m

SITE 1312 20m x 181m

SITE 1412 20m x 181m

SITE 1512 20m x 181m

SITE 1612 20m x 181m

SITE 1712 20m x 181m

SITE 1812 20m x 181m

SITE 1912 20m x 181m

SITE 2012 20m x 181m

SITE 2112 20m x 181m

SITE 2212 20m x 181m

SITE 2312 20m x 181m

SITE 2412 20m x 181m

SITE 2512 20m x 181m

SITE 2612 20m x 181m

SITE 2712 20m x 181m

SITE 2812 20m x 181m

SITE 2912 20m x 181m

PARK ROAD

LANGFORD CRES

WENDALE DRIVE

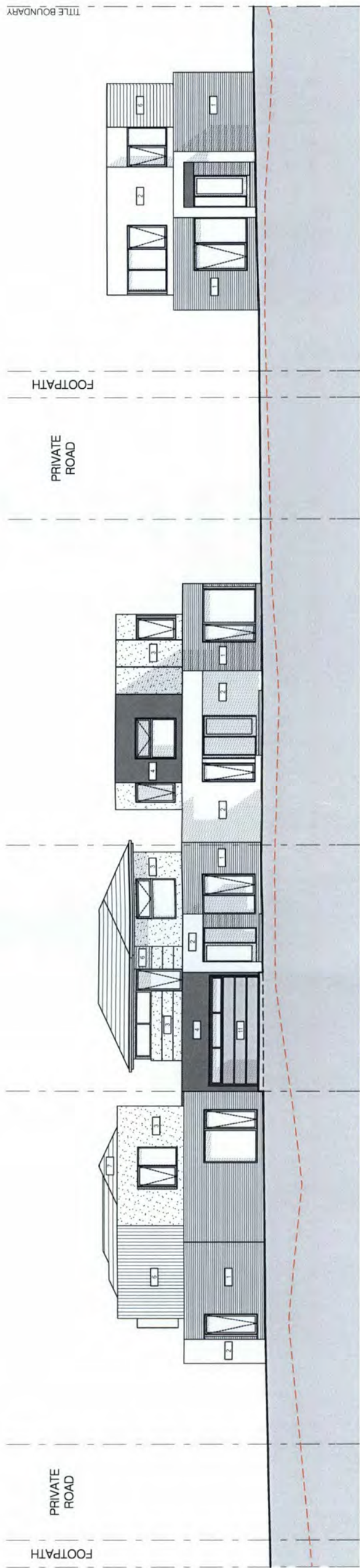
LISBETH AVENUE

ADVERTISED PLANS
DATE: / /

RECEIVED
8 JUL 2016
STATUTORY PLANNING OFFICE

TAOUK ARCHITECTS
RESIDENTIAL DEVELOPMENT
25 - 29 PARK ROAD
DONVALE VIC 3111
114 BASSINGDALE ROAD, DONVALE VIC 3111
TEL: 03 9451 1111
WWW.TAOUKARCHITECTS.COM.AU

PROJECT: RESIDENTIAL DEVELOPMENT
25 - 29 PARK ROAD
DONVALE VIC 3111
DATE: JUL 2016
SCALE: 1:200 @ A0 1:400 @ A2
DRAWN BY: V.G.
CHECKED BY: V.G.
TOWN PLANNING ISSUE
TPA14 OF 15
A

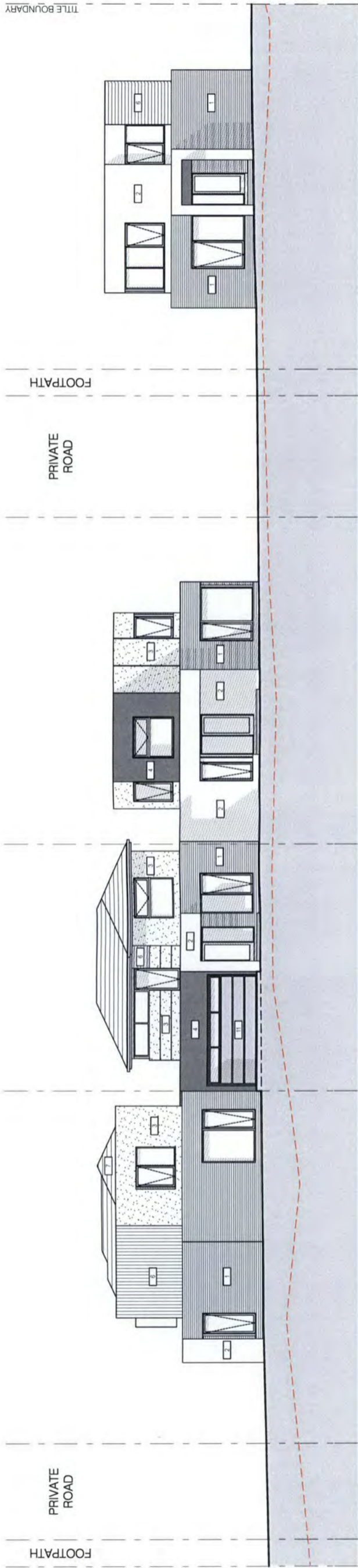


RECEIVED
 18 JUL 2016
 STATUTORY
 PLANNING OFFICE

MATERIALS + FINISHES SCHEDULE

 01	FACE BRICKWORK PGH "BLUE STEEL FLASH"		
 02	CONCRETE RENDER DULUX COLOUR SPECIFIER - PCWF8 "WHITE ON WHITE"	 05	INFILL PANEL DULUX COLOUR SPECIFIER - COLORBOND "MONUMENT"
 03	CONCRETE RENDER DULUX COLOUR SPECIFIER - PG2C3 "FLOODED GUM"	 06	TIMBER CLADDING SPOTTED GUM - NATURAL STAIN FINISH
 04	CONCRETE RENDER DULUX COLOUR SPECIFIER - PG2C7 "RAKU"	 07	ROOF MONIER FLAT PROFILE CONCRETE TILES - HORIZON "SAMBUCA"
 RD01	DRIVEWAY CONCRETE DRIVEWAY - CHARCOAL COLOUR	 08	WINDOW FRAMES ALUMINIUM FRAME - DULUX POWDERCOATINGS - "MONUMENT"
 RD02	PRIVATE ROAD BITUMEN SEALED ASPHALT ROAD	 09	DOOR FRAMES TIMBER FRAME - DULUX COLOR SPECIFIER - CB_12 "MONUMENT"
 RD03	LIGHTING BOLLARDS 1M HIGH LIGHT BOLLARD - BLACK POWDER COAT FINISH	 10	GUTTERS, FASCIAS AND DOWNPIPES COLORBOND STEEL - "WOODLAND GREY"
 RD04	ENTRY PATHWAYS CONCRETE PAVER "CHARCOAL" COLOUR	 11	GARAGE DOOR SECTIONAL PANEL LIFT - COLORBOND STEEL - "WOODLAND GREY"
 RD05	ENTRY PATHWAYS CONCRETE PAVER "CHARCOAL" COLOUR	 12	GARAGE DOOR SECTIONAL PANEL LIFT - COLORBOND STEEL - "WOODLAND GREY"

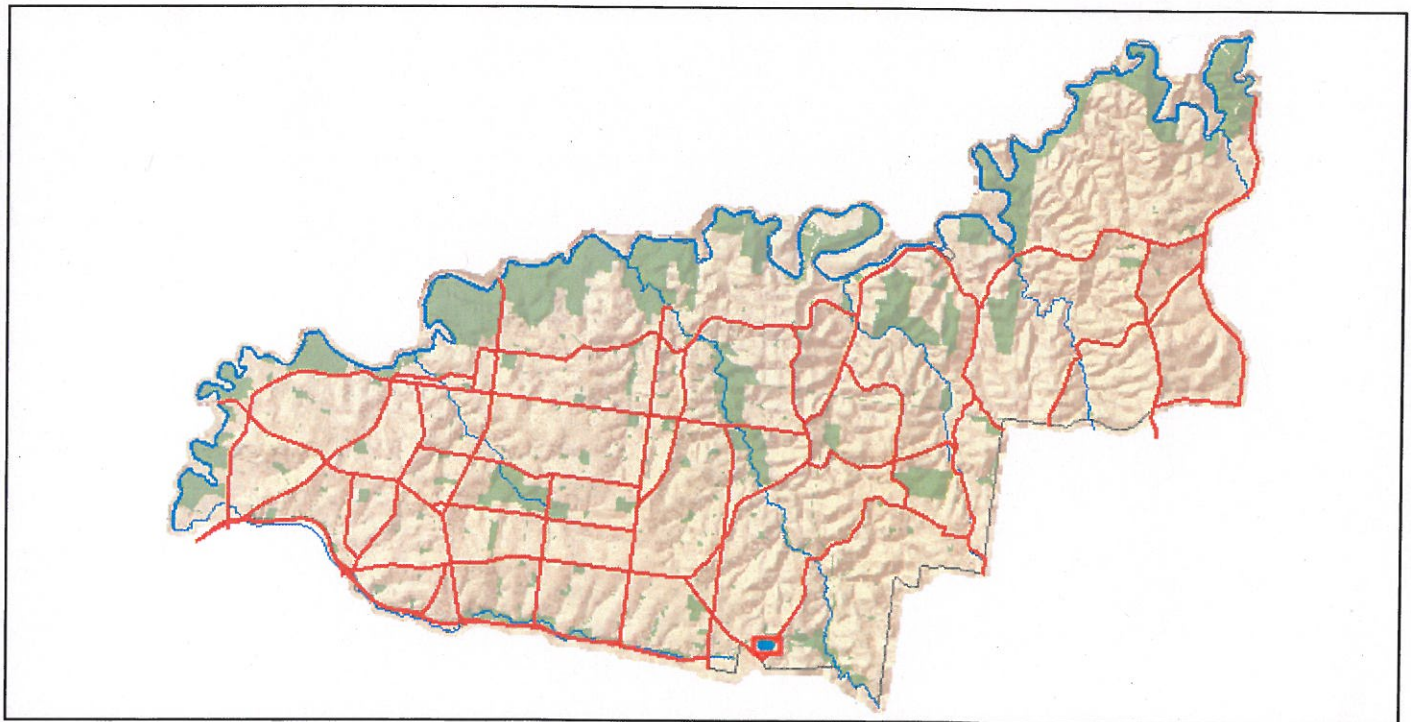
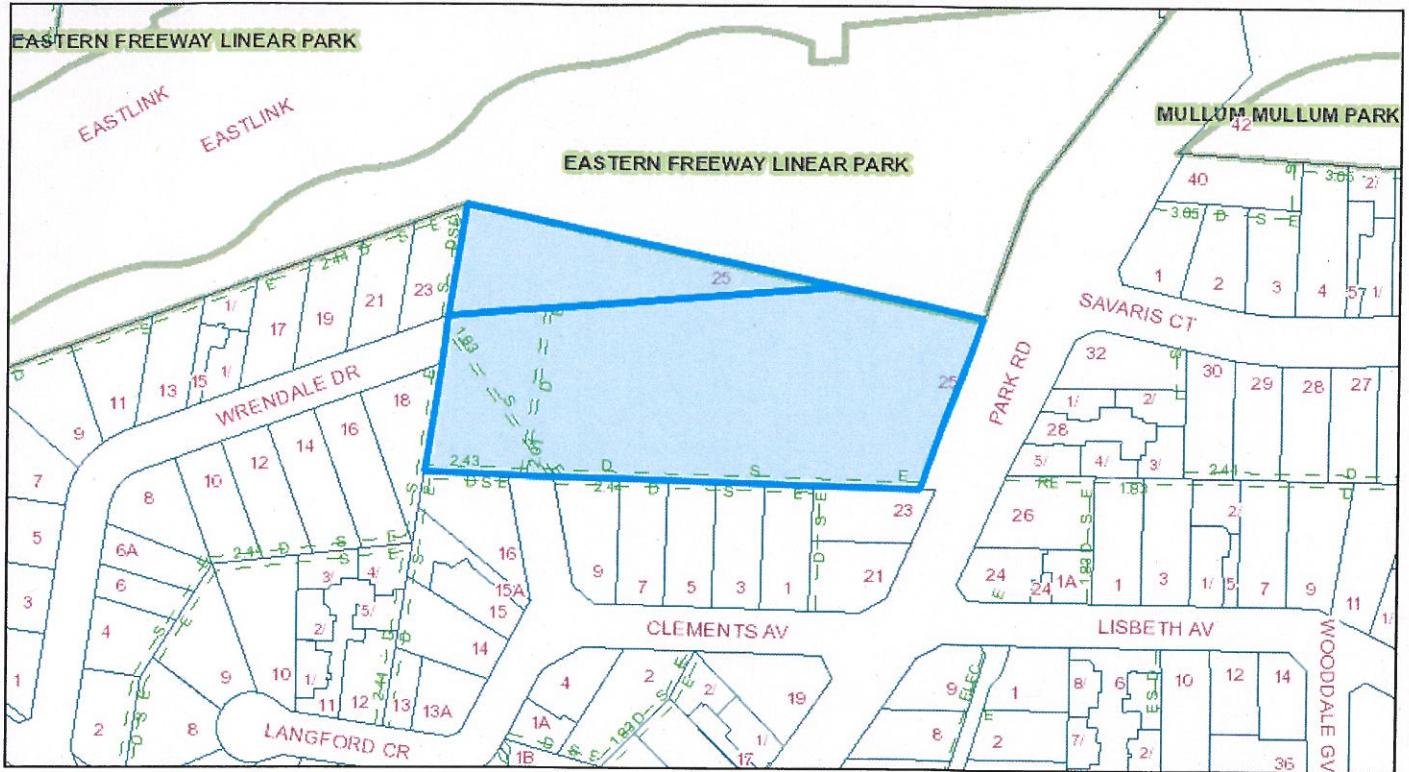
ADVERTISED PLAN
 DATE: / /



RECEIVED
1 8 JUL 2016
STATUTORY
PLANNING OFFICE

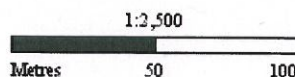
MATERIALS + FINISHES SCHEDULE

 01	FACE BRICKWORK PGH "BLUE STEEL FLASH"	 05	INFILL PANEL DULUX COLOUR SPECIFIER - COLORBOND "MONUMENT"	 09	DOOR FRAMES TIMBER FRAME - DULUX COLOR SPECIFIER - CB_12 "MONUMENT"
 02	CONCRETE RENDER DULUX COLOUR SPECIFIER - PCWF8 "WHITE ON WHITE"	 06	TIMBER CLADDING SPOTTED GUM - NATURAL STAIN FINISH	 10	GUTTERS, FASCIAS AND DOWNPIPES COLORBOND STEEL - "WOODLAND GREY"
 03	CONCRETE RENDER DULUX COLOUR SPECIFIER - PG2C3 "FLOODED GUM"	 07	ROOF MONIER FLAT PROFILE CONCRETE TILES - HORIZON "SAMBUCA"	 11	GARAGE DOOR SECTIONAL PANEL LIFT - COLORBOND STEEL - "WOODLAND GREY"
 04	CONCRETE RENDER DULUX COLOUR SPECIFIER - PG2C7 "RAKU"	 08	WINDOW FRAMES ALUMINIUM FRAME - DULUX POWDERCOATINGS - "MONUMENT"	 12	GARAGE DOOR SECTIONAL PANEL LIFT - COLORBOND STEEL - "WOODLAND GREY"
 RD01	DRIVEWAY CONCRETE DRIVEWAY - CHARCOAL COLOUR	 RD02	PRIVATE ROAD BITUMEN SEALED ASPHALT ROAD	 12	ENTRY PATHWAYS CONCRETE PAVER "CHARCOAL" COLOUR
	LIGHTING BOLLARDS 1M HIGH LIGHT BOLLARD - BLACK POWDER COAT FINISH				



 **Subject Land** **Address:** 25-35 Park Road DONVALE VIC, 3111

Whilst all care has been taken in the preparation of this cadastral base map, Manningham and the State of Victoria accepts no responsibility for the accuracy of any information shown. Users should rely on their own enquiries in order to validate information shown on this map. This information is for Demonstration only.



28/11/2016 3:29 PM