

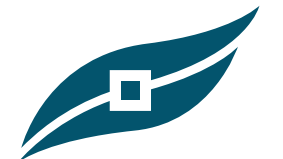
Manningham Sports Club Forum

Monday 17 March 2025



Interpreter service **9840 9355**

普通话 | 廣東話 | Ελληνικά | Italiano | عربي | فارسی



MANNINGHAM

Tonight's agenda

Part 1 – Indoor, outdoor and lease clubs

- Welcome
- Your staff contacts
- Melbourne East Region Sport and Recreation Fair Access Policy
- Capital Works Funding Program and Infrastructure Policy
- Club development and grant opportunities
- Guest speaker – Simon Derrick
- Break – stalls and networking



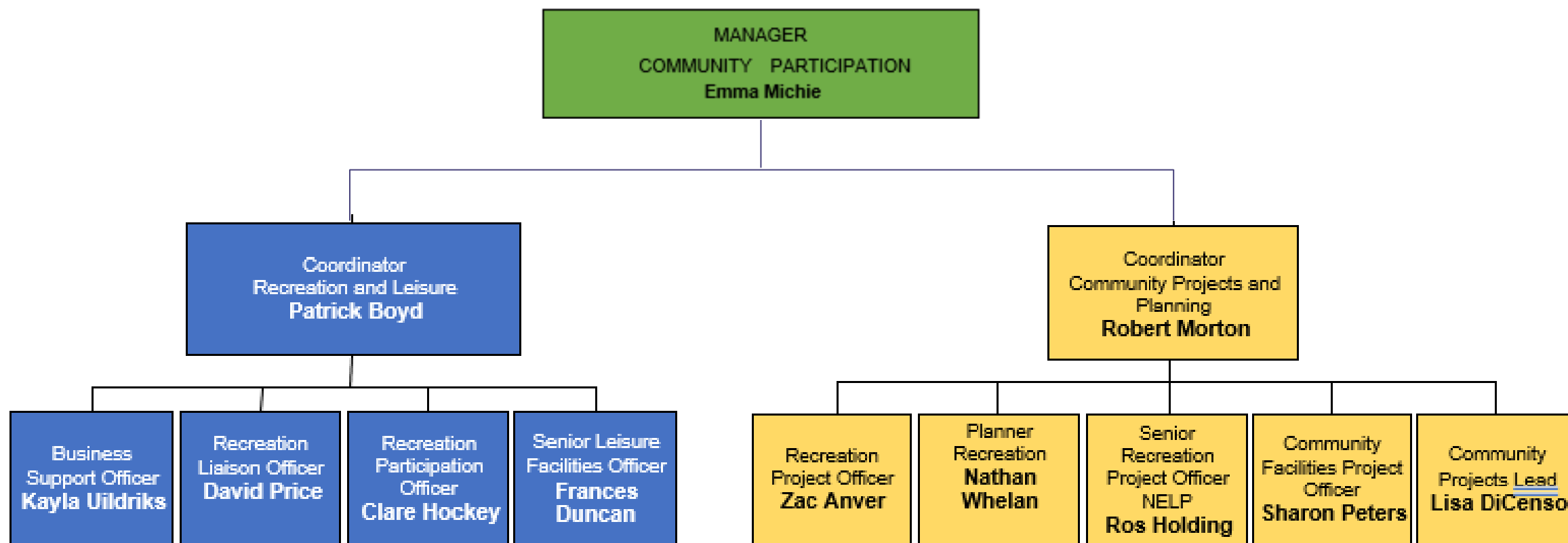
Tonight's agenda

Part 2 – Outdoor sports only

- Allocations Policy
- Pricing Policy
- License Agreement

Mayor Cr Deirdre Diamante

Your staff contacts



How to contact us

General enquiries

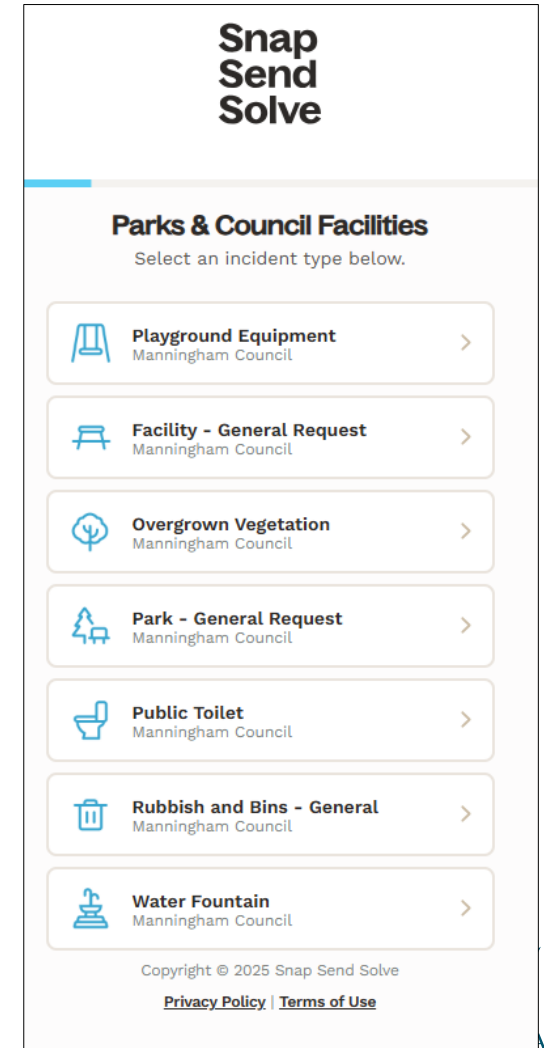
- recreation2@manningham.vic.gov.au
- 9846 0595

Maintenance

- www.snapsendsolve.com
- Council website – contact us form

Outside business hours

- Emergency situations/ incidents, pavilion access, floodlighting, etc.
- (03) 9840 9333 - will redirect to after-hours call service



Melbourne East Region Sport and Recreation Fair Access Policy

The Fair Access Policy Roadmap is a policy framework created by the Office for Women in Sport and Recreation, in partnership with VicHealth and Sport and Recreation Victoria.

Goal: To make sure women, girls, transgender and gender diverse people have equal access to community sports facilities.

What does this mean for sport clubs in Manningham?



Capital Works Funding Program and Infrastructure Policy

Provide a consistent approach to the provision of infrastructure and related financial contributions, for outdoor organised sports.

Design principles

- Community focus
- Multipurpose
- Equitable use/access
- Environmental Sustainability

Facility standards

- Requirements for each sport based on the facility hierarchy

Facility hierarchy

- Regional
- Municipal
- District
- Local
- School

Fit out of equipment

Financial contributions

- Core facility components
- Optional facility components
- Council contributions

In-Kind contributions

Capital Works Funding Program and Infrastructure Policy

Provides funding towards sporting facility infrastructure developments.

Expression of Interest process via an online application.

Assessed in February and August each year against a pre-determined criteria.

Projects can be funded by:

- Council or Club only
- Club and Council and external funding agencies

Criteria:

- Asset condition
- Community benefit (sport and unstructured activity)
- Financial contributions
- Strategic alignment
- Environmental benefits

Club development opportunities

[Webinar and workshops](#)

Volunteer Management Webinar – Delivered by EV Strengthening Communities, 26 March 2025.

Sport for All workshops – Facilitated by industry expert Lisa Lymbery, Victoria University. Multiple dates across May and June. Manningham sessions are Wednesday 11 June Wednesday 18 June.

Inclusive Clubs Project – Facilitated by Leisure Networks and Access Health and Community, program will run mid year.

[Grants](#)

Sporting Club Grants – Close March 27

Manningham Small Grants – Next assessment of grants after May 31

[Sports Resource Hub](#)

Guest Speaker – Simon Derrick

Richmond Football Club

General Manager – Commercial Operations & Stakeholder Engagement



Break



Stall holders



Food



Allocations Policy

Updated Allocations Policy

The new allocations policy was endorsed in August 2024.

Key changes were made to the policy;

- *Changes to the eligibility criteria for seasonal and annual allocations of outdoor sports fields and pavilions.*
- *The introduction of a penalty system in response to breaches to license agreements.*
- *Weighted scoring criteria for seasonal and annual allocations of outdoor sports fields and pavilions.*

Allocations Policy

Changes to the eligibility criteria for seasonal and annual allocations of outdoor sports fields and pavilions.

- Submit a Usage Plan outlining how clubs intend to use the facility (part of the online application process).
- Provide periodic reporting on facility usage and program outcomes, contributing to Council's oversight of participation trends and evaluation of facility allocations when requested.
- There may be additional details requested in future from clubs in relation to the Fair Access Policy

These elements will be built into the online allocations booking system platform for clubs to provide.

Allocations Policy

Introduction of a penalty system in response to breaches to license agreements.

Once it has been determined that a breach of the Licence Agreement has occurred, the severity of the breach will be evaluated using the breach severity matrix.

This is based on:

- The level of impact on the community (disturbances, impact on amenity etc.)
- The level of impact to Council as a result of the breach.

Breach severity matrix

		Impact on Community		
		Low	Medium	High
Impact on Council	Low	Level 1	Level 2	Level 3
	Medium	Level 2	Level 3	Level 4
	High	Level 3	Level 4	Level 5

Allocations Policy

Weighted scoring criteria for seasonal and annual allocations (continued)

Criteria	Guiding Principles	Maximum Weighted Score
1 History in Manningham	Number of consecutive years as a Manningham-based user group (primary facility use must be in Manningham).	15
2 Length of tenure	Number of previous years the user group has used the requested facility (or previously replaced facility).	20
3 Financial investment into the facility	Financial (or in-kind) contributions towards Council approved capital works projects at the facility (or previously replaced facility) within the past ten years	10
4 Community Participation	Number of registered individual participants, junior participants, female participants, and teams registered in the previous season.	20
5 Community Programs and Initiatives	Programs / initiatives that promote inclusive participation for under-represented groups (women and girls, people with disability, multicultural groups, LGBTQIA+ community, older adults etc.)	15
6 Fair Access	Demonstration of efforts to ensure fair and equitable access to the facility and user group resources for all - regardless of gender, sexuality, cultural background or ability.	10
7 Breaches of licence agreement	Number of penalty points accumulated within the previous three years due to breaches.	5
8 Governance	Provision of policies, reports and plans, such as Good Sports accreditation, financial statements and current strategic / business plans. Additionally, documentation of registration, certification, or accreditation with club improvement and development programs/courses (i.e. SALT, SSA accredited programs, Council workshops).	5
Total		100

Pricing Policy for Use of Council Active Open Space

How are fees calculated?

Cost recovery model:

- 35% sports fields (turf and synthetic)
- 15% satellite hard courts (netball training venues)
- Based on maintenance costs only
- Does not include management costs (e.g. staff costs)

Types of fees:

- Team Fee
- Hourly Fee
- Casual Fee
- Turf Wicket Fee
- Synthetic Turf Fee (Soccer)

How can I get a concession on my fees?

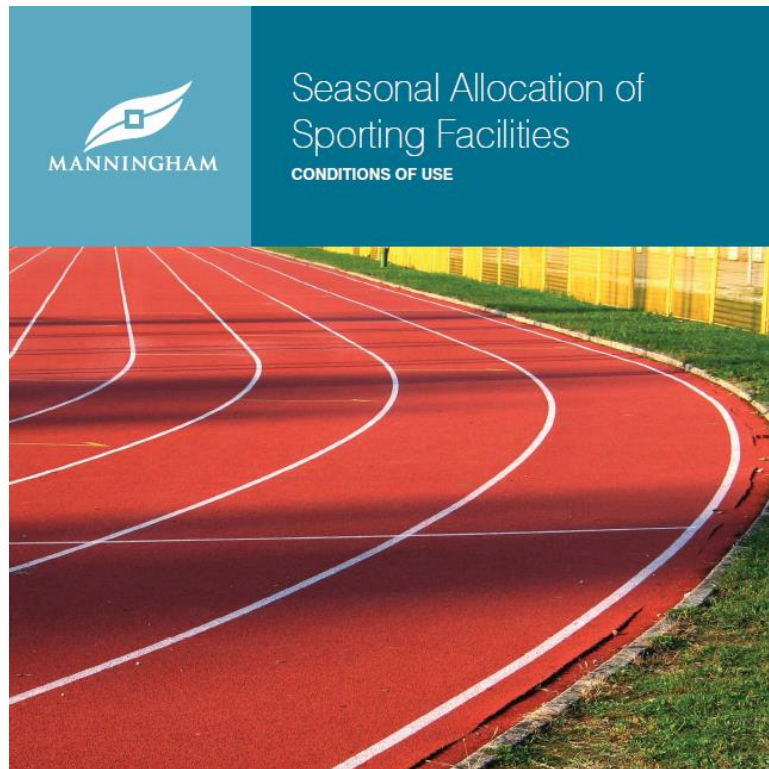
Fee Concessions

50% Concession is applied for:

- Junior teams with the words 'under', including under 19s
- Female teams participating in male dominated sports (e.g. AFL, soccer, cricket etc.)
- Male teams participating in female dominated sports (e.g. netball)
- Older adult teams participating at a master's level
- Teams eligible to participate in 'all abilities' competitions
- Concessions applied where participation is individual and not team based (e.g. athletics)

Licence Agreement

Current User Agreement



Updated User Agreement



Licence Agreement

- Sets parameters for the use of Council assets (sports facilities) by allocated user groups (seasonal and annual).
- Outlines responsibilities and requirements of both user groups and Council.
- Information lacking and outdated.
- Reviewed on an ongoing basis. Latest version will be available on Council's online sports hub.
- User groups are responsible for reading and understanding the Licence Agreement.

Licence Agreement

Key updates

Improved clarity on processes and responsibilities such as:

- Maintenance, cleaning and storage
- Times of use / special usage requests
- Signage
- Damage, security and theft
- Fee payments
- Child safety
- Alcohol and smoking
- First Aid, AEDs, emergency management
- PA system use

Licence Agreement

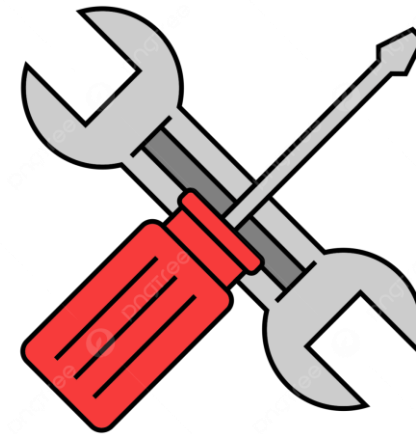
Maintenance, cleaning & storage

Previous:

- Basic overview

Updated:

- User group / Council responsibilities
- Sports fields
- Pavilions
- Sport specific equipment and infrastructure



Licence Agreement

Times of use

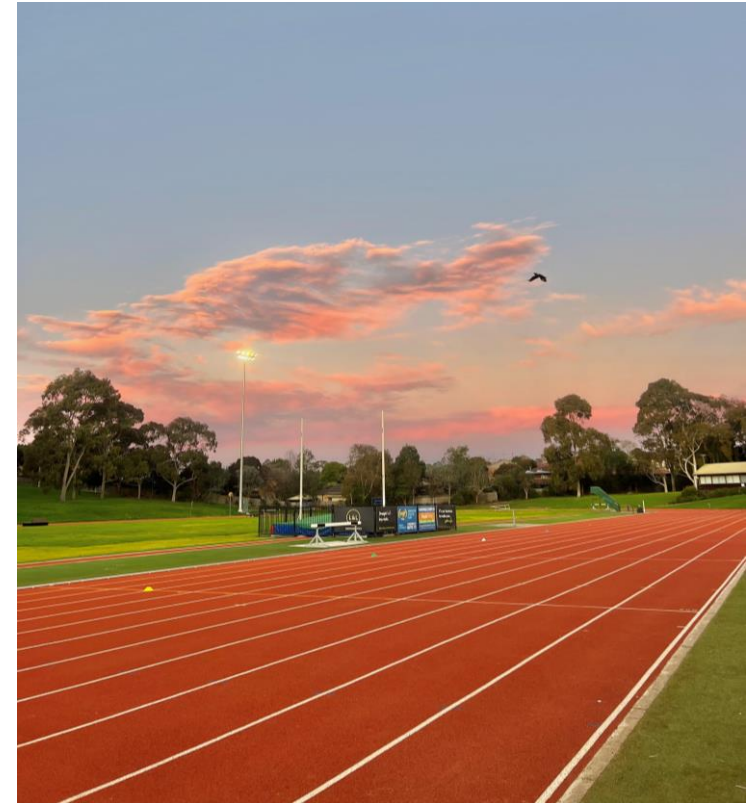
Previous:

- Social room
- Tom Kelly Athletics track



Updated:

- Pavilions, sportsgrounds and floodlighting
- Tom Kelly Athletics track has own set of Ts & Cs
- Special usage requests



Licence Agreement

Signage

Previous:

- Pointed to 'Outdoor Advertising on Council Owned and Managed Property' policy

Updated:

- Requirements for size, location and content
- Approvals process



Licence Agreement

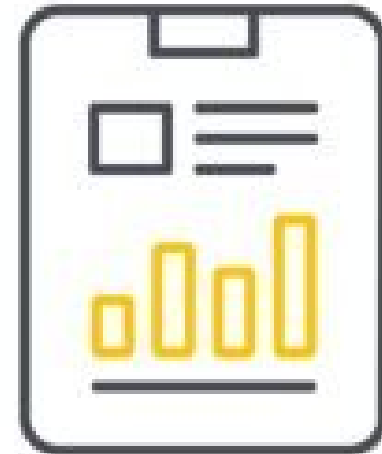
Fee payments

Previous:

- No information

Updated:

- Seasonal and annual allocation fees
- Casual fees
- Bond payments
- Utilities and maintenance



Licence Agreement

Child safety

Previous:

- WWC declaration

Updated:

- Signed declaration removed
- Agree to adhere to the Victorian Government's child safety standards



Licence Agreement

Alcohol and smoking

Previous:

- Liquor licence approvals
- No smoking in enclosed premises

Updated:

- Junior sport is smoke-free and vape-free
- No drinking at junior sport
- Duty of care – culture of responsible drinking



Licence Agreement

First Aid, AEDs, emergency management

Previous:

- First Aid kits
- Evacuation preparedness

Updated:

- AEDs
- First aid qualified personnel
- Operational requirements



Licence Agreement

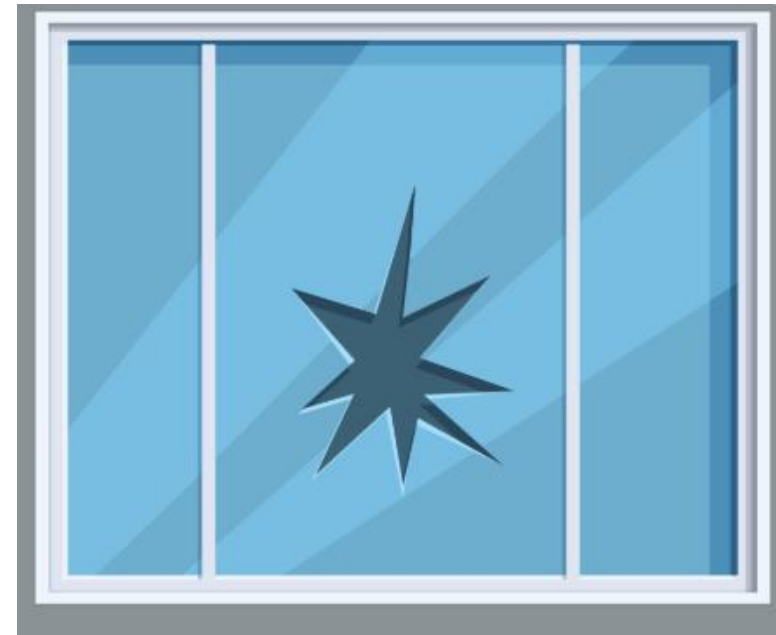
Damage, security and theft

Previous:

- Liability
- Insurance

Updated:

- Keys
- Security systems
- Graffiti
- Theft and damage



Licence Agreement

Public address systems

Previous:

- Can be used during allocated hours

Updated:

- Adhere to EPA requirements and times
- Announcements only, no music or race commentary



SHARE YOUR FEEDBACK WITH US

Scan the QR code and share
your thoughts about
tonight's forum.

Your feedback will help
shape future forums.



Thank you!