

# MANNINGHAM

*The community that matters*

DECEMBER 2020

**REQUEST YOUR  
2021 COMMUNITY  
CALENDAR**  
[manningham.vic.gov.au/  
calendar](http://manningham.vic.gov.au/calendar)

**MEET YOUR NEW COUNCILLORS**  
Representing nine new wards | PAGE 4

**BE EMERGENCY READY THIS SUMMER**  
Tips to help you be prepared | PAGE 8

 [manningham.vic.gov.au](http://manningham.vic.gov.au)



MANNINGHAM

# CONTENTS

## FEATURES

### 6 Ruffey Lake Park draft masterplan

Have your say

### 10 The giving season

Help those in need

## REGULARS

### 2 Mayor's message

### 11 In brief

### 14 News in your language

简体中文信息参

你所用語言的資訊

Notizie nella tua lingua

Τα νέα στην γλώσσα σας

اخبار به زبان شما

أخبار بلغتكم

### 15 Your Council

### 16 Council meetings

### 16 Council contacts



COVER IMAGE:  
Pop-Up Dining at  
Tunstall Square.

# MESSAGE FROM OUR MAYOR



It is an honour to welcome you to this edition of *Manningham Matters* as your newly elected Mayor for the first term of our new Council.

Last month, my fellow Councillors and I were officially sworn in as your new Councillors across the nine new wards of Manningham. The implementation of the new ward structure was a historic moment for Manningham.

Over the next four years we all look forward to working with you to plan and deliver projects and initiatives that reflect the aspirations of our wonderful and diverse community. We will represent all the people of Manningham. Public value will be at the heart of our decisions and we will work together to deliver the very best outcomes for our community. You can read more about your new Councillors on page 4.

As we near the end of what has been an unprecedented year for everyone, I encourage you to connect with family and friends this festive season in a COVID safe way.

There's plenty of options to support our local businesses by visiting one of our local shopping precincts. You can also enjoy one of the new COVID safe Pop-Up Dining spaces we have installed at various locations around Manningham; see page 7 for details.

Given my long-term involvement in emergency services. I have seen firsthand the need to have emergency plans and make sure you and your family are prepared for the summer season. To help you get ready, see our emergency planning story on page 8.

On behalf of all of us at Manningham Council we wish you a very Merry Christmas and a safe and happy New Year.

Stay safe,

Cr Andrew Conlon  
**Mayor**

## Newly renovated customer service centre opens

We have renovated our customer service area in our Civic Centre to create a flexible, accessible and welcoming space for all.

New front counter features include two new meeting rooms with multimedia capabilities for customers to meet with us, lower bench height for disability access and a fresh new modern look including a digital screen showing 'What's On'. We also have a concierge to welcome customers and to help create a COVID safe environment.

Our customer service opening hours are Monday to Friday, 8.00am to 5.00pm. If you have any questions, please call us on 9840 9333.



# Request your 2021 Community Calendar

This year our 2021 Community Calendar is available on request.

Our calendar is free for all Manningham residents and features beautiful images from around Manningham.

To request a copy

[manningham.vic.gov.au/calendar](http://manningham.vic.gov.au/calendar)

9840 9333

## CONTACTING US THIS FESTIVE SEASON

Our opening hours are Monday to Friday from 8.00am to 5.00pm.

During the holiday period, services will be closed or reduced on some days.

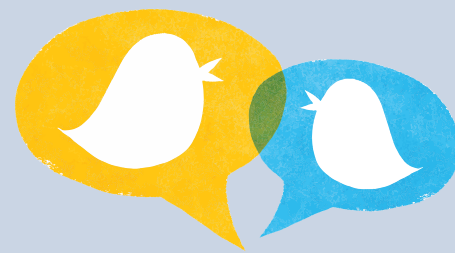
All priority services will continue during this time.

For any urgent matters

9840 9333

For full details of our opening hours and service availability this holiday season, visit

[manningham.vic.gov.au/talk-to-us](http://manningham.vic.gov.au/talk-to-us)



All types of batteries have a potential to start a fire, so it's important to dispose of them properly. For more information and to find your nearest recycle point visit [recyclingnearyou.com.au/batteries](http://recyclingnearyou.com.au/batteries)

Want to know what's happening in Manningham's Environment and Sustainability space? Subscribe to Manningham's monthly Environment and Sustainability e-newsletter. It features information about upcoming Council events and workshops. [manningham.vic.gov.au/environment-and-sustainability](http://manningham.vic.gov.au/environment-and-sustainability)



What's flowering in Manningham?

The Scented Sundew, or *Drosera aberrans*, is a carnivorous plant. It finds its nutrients by consuming small insects that land within its leaf structure. They share their food with other plants by allowing 'endophytic fungi' into their roots.

Image credit: Cathy Willis



What's flowering in Manningham?

The Chocolate Lily, *Arthropodium strictum* is a perennial herb that flowers through spring. It has soft green leaves that die back in summer. As its name suggests, it has a sweet chocolate scent that comes from its striking purple flowers. This scent is even more noticeable on warm humid days after rain.

Image credit: Cathy Willis



What's flowering in Manningham?

The Snowy Daisy Bush, *Olearia lirata* is a small to medium size shrub with masses of white flowers that appear in spring. It is crucial to Australian butterflies that require its nectar to survive when reaching maturity. This is because they are no longer caterpillars so can no longer source food from the leaves of the plant species they were born on.

Image credit: Josh Browling

# Introducing your new Council

Following Council elections at the end of October this year, we're pleased to introduce your nine new Councillors representing Manningham's nine new wards.

Your Councillors have been elected for a four-year term and will represent Manningham through to 2024.

Together, your councillors have elected Cr Andrew Conlon as Mayor and Cr Anna Chen as Deputy Mayor for the first year of their four-year term.



## **CURRAWONG WARD**

Cr Andrew Conlon (Mayor)

Cr Conlon has lived in the Currawong Ward with his wife and family of eight children for 17 years. A Manningham Councillor since 2016, Cr Conlon previously served as Mayor during 2017/18.

Cr Conlon is passionate about support services for families and older residents along with sports clubs and volunteer organisations. He believes good governance starts with integrity and transparency and he advocates for improving local traffic management, footpaths, roads and streetscapes as well as park maintenance.

Cr Conlon has managed an engineering consultancy for many years and previously served as a board member of Donvale Christian College and coordinator of a local Donvale basketball club.

Currawong Ward includes parts of Doncaster East, Donvale and Warrandyte.



## **WALDAU WARD**

Cr Anna Chen (Deputy Mayor)

Cr Chen has lived in the Waldau Ward for 20 years and has been a Manningham Councillor since 2016.

Cr Chen values equity, inclusion and positivity as well as the importance of understanding local issues, listening and working together with our community. She stands for cost-effective operations, sustainable planning outcomes, reducing climate impacts and improving public transport.

Cr Chen wants to see more civil participation opportunities provided for young residents to grow and shine. She also wants to see proactive traffic management around schools and that our parks and open spaces are protected and improved.

A practising lawyer, Cr Chen is a volunteer solicitor at the Eastern Community Legal Centre and volunteers with Neighbourhood Watch in Manningham.

Waldau Ward includes parts of Doncaster East and Templestowe.



## **BOLIN WARD**

Cr Geoff Gough

Cr Geoff Gough is passionate about Manningham, having grown up and then raised his own family in the area. He is one of Manningham's longest serving Councillors, having been a Councillor continuously since 1997, and has served as Mayor for four terms.

Improvement of our footpaths, roads, streetscapes and parks is a priority for Cr Gough and he is committed to ensuring Manningham's community infrastructure is well maintained. He believes in prioritising community support, including local business support, transparency in decisions, sound financial management and accountability to our community.

Cr Gough advocates that Council needs to listen, consult and act with responsibility and integrity.

Bolin Ward includes Bulleen and part of Templestowe Lower.



## **MANNA WARD**

Cr Tomas Lightbody

Cr Tomas Lightbody grew up in Donvale and is passionate about the local area and community.

With a background in urban planning, design and architecture, Cr Lightbody believes in good urban planning and protecting Manningham's precious green spaces, taking environmental action and investing in smart infrastructure. He supports renewable energy, strong climate change action and increasing recycling to reduce unnecessary waste going to landfill.

Cr Lightbody is an advocate for better public transport that suits the needs of the community, encouraging a strong local economy. He also wants to ensure all our residents are supported and to promote inclusion and equality in all aspects of our community and our Council services.

Manna Ward includes Donvale and parts of Doncaster East and Nunawading.



### RUFFEY WARD

Cr Stephen Mayne

Cr Stephen Mayne is a long-standing Manningham resident, has raised his family in Manningham and is an active member of the local community. He previously served as a Manningham Councillor from 2008 to 2012 and was

a Councillor of the City of Melbourne from 2012 to 2016.

Cr Mayne is an award-winning business journalist and values best practice governance and transparency. He is passionate about advocating for the best possible outcome from the North East Link, supporting Doncaster Rail and is an advocate for reducing gambling harm in Manningham.

Cr Mayne believes in improvements to parks and open spaces, embracing Manningham's multicultural community and bringing experience and knowledge to Council's advocacy and decision-making processes.

Ruffey Ward includes parts of Doncaster, Doncaster East and Templestowe Lower.



### SCHRAMM WARD

Cr Laura Mayne

Cr Laura Mayne has lived in Manningham all her life and has been actively involved in the Manningham community through a variety of local sporting clubs.

Cr Mayne is passionate about protecting our parks and open spaces, reducing

traffic congestion, limiting excessive development and improving public transport. She believes in supporting local businesses, building community connection especially among our multicultural, elderly and youth communities, and protecting our Manningham way of life.

Cr Mayne is currently studying Law and Commerce at university and is a VCE English Tutor, surf lifesaver and high level football player.

Schramm Ward includes Doncaster, Doncaster Hill and part of Doncaster East.



### TULLAMORE WARD

Cr Deirdre Diamante

Cr Deirdre Diamante has lived in Manningham for more than 40 years and recognises the importance of sustainable economic and environmental decision making that enhances the long term liveability of Manningham.

Cr Diamante believes in growing opportunities for local businesses and efficient spending of our rates on services and infrastructure that better connects the local community, suburbs and streets. She is an advocate for equal opportunity and diversity, for programs that support our elderly residents and for greater state and federal government funding support for Manningham's charities.

Cr Diamante has three school-aged children, is a business owner, a school council representative, Board Director of the Manningham Bendigo Bank Community Branch and an active member of the Manningham Business Excellence Awards.

Tullamore Ward includes Doncaster and parts of Bulleen and Templestowe Lower.



### WESTERFOLDS WARD

Cr Michelle Kleinert

Cr Michelle Kleinert is a long-term resident of Manningham and has been a Councillor of Manningham since 2012, serving as Mayor in 2016/17.

Passionate about Manningham's open space and our vibrant and connected

community, Cr Kleinert believes in supporting local business as well as sporting and community clubs.

Cr Kleinert led the charge in establishing a youth mental health outreach service for Manningham with headspace Hawthorn. She is currently the multicultural ambassador for Mental Health Foundation Australia and holds a mental health first aid certificate.

Cr Kleinert has also served as both president and vice president of the Australian Local Government Women's Association, Victorian branch and was a former vice president of the Victorian Local Governance Association.

Westerfolds Ward includes Templestowe and part of Doncaster East.



### YARRA WARD

Cr Carli Lange

Cr Carli Lange is a resident of Warrandyte and an active community advocate.

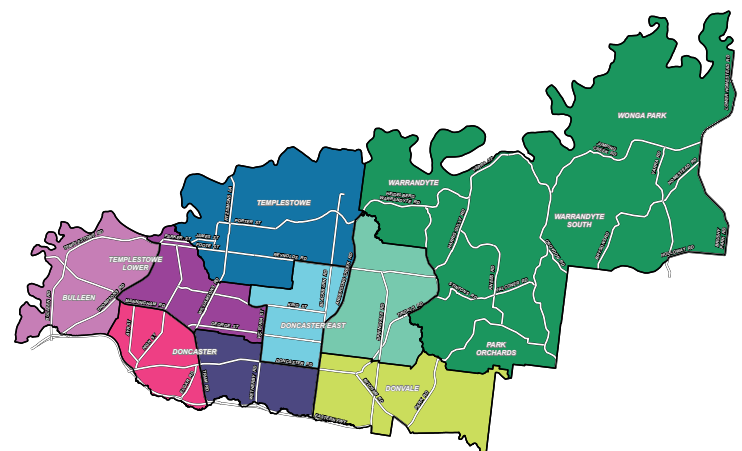
Cr Lange is passionate about Manningham's Green Wedge, protecting local parklands and sporting facilities, including cycling and walking

connections. She supports school mentor programs, health and support services for both families and older residents. She is an advocate for emergency management, reducing traffic congestion as well as sustainable and responsible development.

Cr Lange believes in being authentic, proactive and transparent in representing the community's needs and concerns. She has a background in teaching and has been president of the Warrandyte Community Association since 2018.

Yarra Ward includes Warrandyte, Warrandyte South, Wonga Park, Park Orchards and part of Ringwood North.

To find out more about Manningham's wards and your local Councillors, visit [manningham.vic.gov.au/councillors](http://manningham.vic.gov.au/councillors)



# HAVE YOUR SAY ON THE FUTURE OF RUFFEY LAKE PARK

We've developed a draft landscape masterplan for Ruffey Lake Park and we want to hear your feedback. The draft masterplan will provide clear direction for the future design, development and management of the park over the next 15 years.

The masterplan aims to maintain Ruffey Lake Park's status as the green jewel of Manningham and outlines our plans to preserve, enhance and encourage greater use and enjoyment of the park's diverse natural environmental and historic qualities.

The draft masterplan is based on community consultation undertaken late last year. We heard feedback from over 800 voices who told us what they love about the park and what they felt could be improved.

## DURING THE CONSULTATION THE COMMUNITY TOLD US

The top five most-loved qualities



The walking paths



The lake



The trees



The view



The dog off-lead areas.

The top five items to be improved



Toilets



Trees



Car parking



Dog off-lead areas and walking paths



Bushland areas.

The key recommendations for the draft masterplan are themed around

- Nature and the environment
- Lake and catchment
- Access, circulation and connections
- Recreation and park infrastructure
- Events and social spaces
- Public appreciation, education and signage.

Based on what we've already heard from the community, the masterplan's major initiatives include

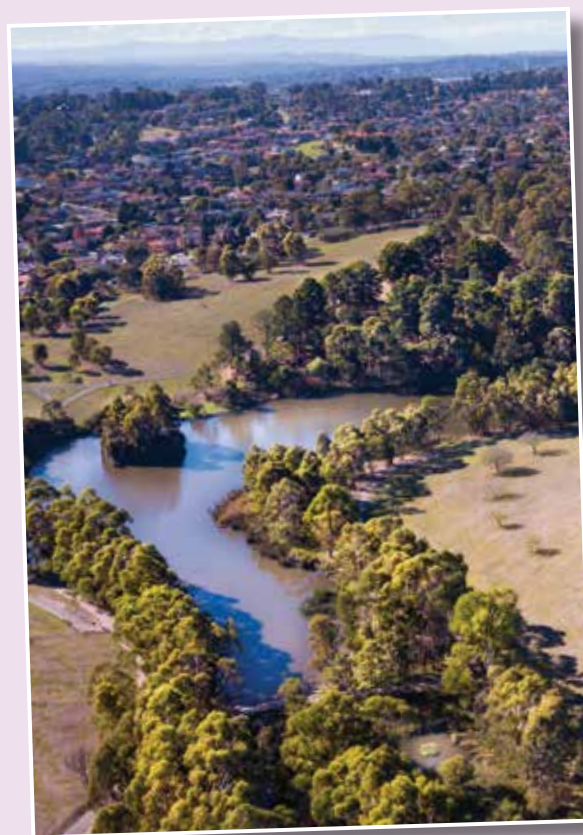
- Lighting the Hill Top Circuit trail to allow for exercise and dog walking outside of daylight hours
- Accessibility improvements including a new lakeside boardwalk and bridges
- Infrastructure upgrades
- Exercise stations
- A youth space that may incorporate a pump track and climbing trail
- New tree planting
- Upgrades to existing playspaces including water play
- Improvements to Magic Mountain play area
- A small amphitheatre

- Art elements
- Investigating interest in the community for a Friends of Ruffey Lake Park group.

To view the draft masterplan and provide your feedback visit

[yoursaymanningham.com.au/ruffey-lake-park](https://yoursaymanningham.com.au/ruffey-lake-park)

Community consultation closes Friday 18 December.



## CHRISTMAS WASTE COLLECTION

Your weekly waste collection will continue without interruption over the upcoming Christmas and New Year period. Your garbage, recycle and garden waste bins will be collected as usual according to your waste calendar.

We know that households often produce more garbage and recycling during the festive season. Please remember that materials must be placed inside your bins and that

overflowing bins will not be collected. To dispose of excess garbage and recycling, check our website for details on local tips and transfer stations, and whether they are open as per COVID-19 restrictions.

Find out more

[manningham.vic.gov.au/waste](https://manningham.vic.gov.au/waste)

# New toys for Manningham Toy Library

Manningham Toy Library is expanding its toy collection. New additions include Pikler Triangles and Kinderboards in addition to many creative play sets and ride on toys for preschoolers.

Toy libraries provide an easy way to access a wide range of toys that are often expensive or take up a lot of space in your home. It's also a win for the environment with less toys purchased and ending up in landfill.

Manningham Toy Library has more than 1600 toys, games, puzzles, costumes, STEM items and larger outdoor toys for children aged three months to eight years. Toys can be borrowed for up to three weeks at a time and then returned and changed for different items. Families, grandparents and carers can borrow toys for an annual fee with discounted memberships for concession card holders.

Manningham Toy Library is currently operating under a COVID safe plan with new members welcome and the new toys are thanks to a Grass Roots Recovery Grant provided by Manningham Council.

For more information

[manninghamtoylibrary.org.au](http://manninghamtoylibrary.org.au)

[manninghamtl@gmail.com](mailto:manninghamtl@gmail.com)



Pop-Up Dining at Templestowe Village.

## Providing COVID safe spaces for the community to connect

As restrictions begin to ease we're trialling a series of temporary Pop-Up Dining spaces in Manningham's local shopping centres.

The Pop-Up spaces are designed to provide a COVID safe place for the community to connect and offer a convenient way for you to linger longer at your local shops and support local businesses.

We're hoping to create spaces that inspire, working with local artists and performers to bring our places to life.

Safety is important to us and our Pop-Up Dining spaces are designed to be COVID safe, taking into account physical distancing requirements and with regular cleaning.

### POP-UP DINING LOCATIONS

We've already installed a series of temporary Pop-Up Dining spaces in Tunstall Square, Templestowe Village and Macedon Square and the community's feedback has been overwhelmingly positive so far.

### WHAT'S NEXT?

We're working on creating more Pop-Up Dining spaces and temporary parks both outside local cafes and at larger centres like Civic and MC Square Plaza (outside the popular Doncaster Library), and also in Warrandyte and at Jackson Court shopping precinct.

We are looking to help our community connect in their favourite places. We'd love to hear about your local shopping hubs, parks, and significant meeting places. Tell us your ideas about how we can partner with you to create vibrant community spaces for all to enjoy.

Tell us your great ideas by completing our survey

[manningham.vic.gov.au/pop-up-feedback](http://manningham.vic.gov.au/pop-up-feedback)

# MAKE SURE YOU'RE PREPARED THIS SUMMER

With summer now upon us and as the weather heats up, now is the time to make sure you and your family are prepared for an emergency.



## KNOW YOUR RISKS

You don't need to live near bushland for your home to be at risk of fire – remember grass fires can be just as dangerous as bushfires. Make sure you know what to do if you live close to grassland in a rural area or where the suburbs meet grassland.

[cfa.vic.gov.au/about/plan-and-prepare](https://cfa.vic.gov.au/about/plan-and-prepare)

## PREPARE YOUR EMERGENCY PLAN

Is your emergency plan written down, shared and rehearsed with everyone included in it? To ensure you're prepared it's good to

- Have a written copy of your plan in an easily accessible location in your home and a back up copy on your mobile or smart device
- Develop your plan with everyone in your household and include your neighbours
- Regularly read and practice your plan with your family and neighbours
- Have a back up plan in the event that circumstances change.

[manningham.vic.gov.au/prepare-for-an-emergency](https://manningham.vic.gov.au/prepare-for-an-emergency)

## Have a back up plan

Fires are unpredictable and it's important to remember that home emergency plans can fail. Having a back up plan that identifies your shelter or last resort options may save your life if you are caught in a fire.

[cfa.vic.gov.au/plan-prepare/back-up-plans](https://cfa.vic.gov.au/plan-prepare/back-up-plans)

## Have a plan for your pets and livestock

Ensure you have a way to safely transport your pets and livestock. If possible, have options for places your pets can stay in an emergency.

[rspcavic.org/services/emergency-assistance/emergency-planning](https://rspcavic.org/services/emergency-assistance/emergency-planning)

## BUILD YOUR EMERGENCY KIT

Deciding on and locating essentials while under the stress of an emergency may lead to important items or necessities being missed.

Build a home emergency kit with key essential items in one easily accessible place. Have a back-up kit in your vehicle or at a family member's home so you are completely prepared. When building your emergency kit, think of items you would need if you were displaced for at least 72 hours.

[emergencyprepare.com.au/kit/start-packing-your-emergency-kit](https://emergencyprepare.com.au/kit/start-packing-your-emergency-kit)

## CONNECT WITH YOUR NEIGHBOURS

Discuss your emergency plans with your neighbours and how you can support each other. Identify and connect with neighbours who may need assistance planning for an emergency and discuss how you may be able to help them.

## PREPARING YOUR PROPERTY

You can reduce the risks bushfires pose to your home and family by removing overgrown vegetation from your property.





## *New vegetation clearing exemptions to help with bushfire protection*

In August this year, the Minister for Planning introduced new exemption provisions that allow for vegetation around existing houses and along fences to be removed for bushfire protection purposes, without the need for a planning permit.

These exemptions are commonly known as the 10/30 and the 10/50 rule and apply to houses and fences constructed before 10 September 2009. The rule allows for a defensible space to be created around existing buildings and along fence lines.

The new exemptions are more prescriptive than they were previously. They now only apply to land within a designated Bushfire Prone Area – or the Bushfire Management Overlay (BMO) under the Manningham Planning Scheme – unlike the previous exemptions which applied across the whole municipality. This now applies to properties in Donvale, Park Orchards, Warrandyte, Warrandyte South, Wonga Park and parts of Templestowe and Doncaster East.

Residents of Bulleen, Templestowe Lower, Doncaster and most parts of Templestowe and Doncaster East can no longer use these planning permit exemptions to remove vegetation from their properties.

If you are considering clearing vegetation to protect your home or fences from bushfires, you need to be familiar with the new exemption provisions before you remove any vegetation. In instances where an exemption to remove vegetation does not exist, you may need to obtain a planning permit before the vegetation is removed.


To find out whether your property is within a Bushfire Prone Area or the BMO, visit the Department of Environment, Land, Water and Planning's website and enter your address to produce a report with this information.

[planning.vic.gov.au/schemes-and-amendments/planning-report-search](https://planning.vic.gov.au/schemes-and-amendments/planning-report-search)

If you would like to know more about the exemptions or on the requirements for a planning permit to remove vegetation, please contact our Statutory Planning Unit on 9840 9470.

The Manningham Planning Scheme includes controls about removal of vegetation, particularly native vegetation and we can help you navigate them.

Find out if you need approval to remove vegetation

 9840 9333

 [manningham.vic.gov.au/bushfire-emergencies](https://manningham.vic.gov.au/bushfire-emergencies)

### **UPDATE YOUR INSURANCE**

Does your insurance cover your risks? Are you covered for natural disasters? Will you have enough insurance to cover costs if you had to rebuild?

It is important to read all the fine print of your policy and ensure you are covered for all of your risks.

 [insureit.vic.gov.au](https://insureit.vic.gov.au)

### **STAY INFORMED**

Download the VicEmergency app to access community information updates and warnings for all types of emergencies occurring in Victoria.

 [emergency.vic.gov.au](https://emergency.vic.gov.au)

Download the Bureau of Meteorology app, this will give you detailed weather information based on your location.

 [bom.gov.au/app](https://bom.gov.au/app)

### **MONITOR EMERGENCY WARNINGS**

Tune into emergency broadcaster radio stations 774 ABC or Eastern 98.1FM. If your phone is in an area impacted by an emergency and phone service is available, alert information may be sent to your landline as a voicemail message or to your mobile phone as a text message.

# Share your goodwill this holiday season

With the festive season now upon us, we have the opportunity to help families in our community who are experiencing hardship and who might have been doing it extra tough this year. The festive season is a great time to show how much you care.

## MAKE A DONATION

For families who celebrate Christmas, it can be an expensive time. However, there are many people in our community who can't afford to buy enough food, let alone gifts for their children. Why not donate to an organisation that distributes gifts and food to people in need?

Local organisations that support Manningham residents include

- Doncare
- Manningham Christian Centre - CareNet
- Vantage Point Church
- LinC Manningham

These organisations welcome donations of gift cards or cash.

Victorian support organisations include:

- Red Cross
- Anglicare
- Melbourne City Mission
- Sacred Heart Mission
- The Salvation Army
- Starlight Foundation

- St Vincent de Paul
- The Smith Family
- Wesley Mission
- UnitingCare

And don't forget our furry friends too by giving to rescue organisations such as the RSPCA.

## LOCAL DONCARE WISHING TREES

Every December, Doncare gives families experiencing hardship the opportunity to choose presents for their children so that every child in Manningham can enjoy the spirit of Christmas.

Can you donate a gift card or a toy this year? Doncare's Christmas Wishing Trees are located at Manningham Civic Centre, Aquarena, Myer Doncaster, Bulleen Plaza, The Pines Shopping Centre and North Blackburn Square.

You can also deliver donations of cash, gift cards, new toys or non-perishable food items directly to Doncare at Suite 4, Level 1, 687 Doncaster Road, Doncaster. Or to donate securely online visit

[doncare.org.au](https://doncare.org.au)

## VOLUNTEER YOUR TIME

If you'd prefer to give your time to people in need, Eastern Volunteers manage the Manningham Volunteer Resource Service - and they are always seeking volunteers of all ages and abilities.

[easternvolunteers.org.au](https://easternvolunteers.org.au)

9870 7822

[info@easternvolunteers.org.au](mailto:info@easternvolunteers.org.au)



## BUY LOCAL, EXPLORE LOCAL, WIN PRIZES

Now more than ever it is important that we support our local businesses. We have launched a new Buy Local Explore Local campaign to encourage residents to shop local and explore what Manningham has to offer.

We are running a competition as part of the campaign and you have the chance to win \$1,000 worth of gift certificates to spend at some of Manningham's most popular businesses.

We're running this competition at Templestowe Village, Tunstall Square and Warrandyte.

To be in the draw, just follow these simple steps

1. Visit a participating Manningham shopping precinct
2. Look out for the different posters in the shop windows of participating businesses for the clue
3. Submit your entry by visiting [manningham.vic.gov.au/buy-local-explore-local](https://manningham.vic.gov.au/buy-local-explore-local)

The winners will be drawn on 21 December.

For more information

[manningham.vic.gov.au/buy-local-explore-local](https://manningham.vic.gov.au/buy-local-explore-local)

# IN BRIEF

## WARRANTYTE CAROLS TO BE HELD ONLINE

The Warrandyte Community Carols will be held as two free live online events this year, with a host of local artists lined up to present your favourite carols, alongside Christmas greetings from Warrandyte community groups. The Carols were funded through a Manningham Arts and Culture Grant. The events will be held at 8.00pm on Saturday 19 December and 5.00pm on Sunday 20 December.

To book a session

[facebook.com/WarrandyteCommunityCarols2020](https://www.facebook.com/WarrandyteCommunityCarols2020)

## VCAL AT PINES LEARNING

Pines Learning is accepting 2021 enrolments for its Victorian Certificate of Applied Learning (VCAL), which provides a practical learning option for students in Years 10, 11 and 12. Find out more at an information session or facility tour.

[pineslearning.com.au](https://www.pineslearning.com.au)

9842 6726

[info@pineslearning.com.au](mailto:info@pineslearning.com.au)

## FIND GRANT OPPORTUNITIES ONLINE

Do you find the grant application process confusing and overwhelming? We are here to help with Grant Finder, our new online platform that connects you with a wide range of grant and funding opportunities. Explore local, state and national grants and find the right fit for your project, business or organisation.

[manningham.vic.gov.au/grant-finder](https://www.manningham.vic.gov.au/grant-finder)

## U3A PREPARES 2021 COURSES

U3A Manningham is inviting enrollments to its 2021 courses, with in-person classes returning from the first week of February next year. U3A Manningham provides classes in a broad range of areas for retired and semi-retired people, with tutors working on a volunteer basis to keep courses free.

[u3amanningham.org.au](https://www.u3amanningham.org.au)

# Ajani food pantry calls for donations and volunteers

After opening earlier this year, the Eat and Greet food pantry located at Living and Learning @ Ajani is now assisting 80 families in Manningham by providing pantry staples and frozen meals.

Fresh fruit and vegetables is also being provided to these families in addition to eggs, bread and some dairy produce.

Demand for food relief is steadily increasing. Ajani is calling on the community to donate surplus produce, especially as the spring and summer growing and ripening seasons might see an abundance of produce from home gardens.

"We would like to thank the Manningham residents who are donating pantry items and fresh produce from their gardens. Families love to be able to cook a fresh meal for themselves," says Ajani centre manager Chris Mountford.

"These donations are very helpful and provide essential food groups such as citrus and green vegetables that would not be possible otherwise. We are always looking for more fresh produce that can help local families," she said.

Ajani would also like to hear from local suppliers such as egg producers and for residents to consider donating games and craft kits to provide to the children of families who use the service.

They always have room for more volunteers to assist with running the pantry.

The Eat and Greet pantry was established with help from a Manningham's Community Relief Fund Grant with additional funding from a Small Community Development Grant.

Any donations can be left on the yellow table at the front of Living and Learning @ Ajani between 10.00am and 4.00pm, Monday to Thursday. For more information call 9850 3687.

Living and Learning @ Ajani  
284 Thompsons Road  
Templestowe Lower

[livelearnajani.org.au](https://www.livelearnajani.org.au)

Applications for our 2021 Community Grants Program will open Monday 8 February 2021 and close Monday 15 March 2021. To help prepare your application, register for an information session or grant writing workshop by visiting

[manningham.vic.gov.au/community-training-program](https://www.manningham.vic.gov.au/community-training-program)





## Manningham's Reconciliation Action Plan 2021-2023

Reconciliation is a story that involves all of us. It's a journey we've been taking for many years, as Manningham continues to embrace the unique cultural heritage of Aboriginal and Torres Strait Islander peoples. We acknowledge the particular rights of Wurundjeri Woi wurrung people as traditional custodians of the land and waterways.

Council has a key role to play in fostering respect for and understanding of Aboriginal and Torres Strait Islander cultures, histories, knowledge and rights, and so we are currently developing a Manningham Reconciliation Action Plan to lead us through 2021 to 2023.

A Reconciliation Action Plan provides the direction for an organisation's ongoing commitment to Reconciliation. It's an important step towards achieving higher levels of trust, lowering prejudice, increasing pride in Aboriginal and Torres Strait Islander cultures and valuing of Australia's cultural diversity.

Guided by Aboriginal and Torres Strait Islander perspectives, this action plan will focus on developing and nurturing meaningful relationships and opportunities built on respect between the Aboriginal and Torres Strait Islander community, Council and the wider community.

To create the action plan, we have been undergoing a collaborative process. We have created a Working Group to guide development of the plan, engaged with the Traditional Owners through the Wurundjeri Woi wurrung Cultural Heritage Aboriginal Corporation, and consulted with Reconciliation Australia while also assessing local data and emerging community needs.

We will provide you with updates and opportunities for engagement over coming months.

Artist impressions of the proposed Lions Park upgrade.

### HAVE YOUR SAY: A NEW PLAYSOURCE AMONG THE TREES AT LIONS PARK IN WARRANDYTE

Inspired by the native surroundings of Warrandyte, we're seeking your feedback on a concept plan for the upgrade and expansion of the playspace at Warrandyte River Reserve.

The playspace is designed to allow children of all ages and abilities to play and 'wonder' through the treetops.

Stage one of the Lions Park upgrades along the Warrandyte River Reserve is now complete and we're planning for stage two, for which works will get underway late in 2021.

Stage two of the masterplan includes a major upgrade and expansion to the existing Federation Playspace, a new shelter, barbecue and picnic area and an art project.

The concept plan draws inspiration from the environment of the beautiful surrounding area and aims to connect with nature with a range of features and play opportunities.

#### HAVE YOUR SAY

View the concept plan and have your say before consultation closes on Friday 18 December

[yoursay.manningham.vic.gov.au/lions-park](https://yoursay.manningham.vic.gov.au/lions-park)

9840 9333



## Tunstall Square streetscape upgrade now complete

Our community can now enjoy the upgraded streetscapes of Tunstall Square, with the final stage of the five-year capital works upgrade of the shopping precinct now complete.

Improvements in the final stage included new seating areas, bike racks, a drinking fountain and new landscaping and trees. There is also a new pedestrian crossing and an improved left-hand vehicle exit lane onto Doncaster Road.

We would like to thank the local traders and community for their patience and involvement during the upgrade project.

## SAVE ON ENERGY COSTS AND REDUCE YOUR EMISSIONS

As we've been spending more time at home this year, we've also been using more electricity than usual. We've partnered with the Australian Energy Foundation to provide you with simple advice to reduce your carbon footprint and make your home more energy efficient.

There are many things that you can do to reduce your energy use, but if you're not sure where to start you can join our upcoming webinar or book a free energy consultation to learn more.

### **WEBINAR: INTRODUCTION TO SOLAR AND BATTERIES**

**Wednesday 20 January 2021, 6.30pm to 8.00pm**

With solar becoming more affordable than ever, there's never been a better time to consider solar power and battery storage for your home.

Join this free online information session to find out whether solar and batteries are right for your home:

- Understand how solar and batteries work
- Find out how to get the right system for your home
- Find out about expected savings and payback
- Understand how to claim the government rebates

Reserve your free place:

 [manningham.vic.gov.au/energy](https://manningham.vic.gov.au/energy)

### **BOOK A FREE ENERGY CONSULTATION**

If you would like more information, the Australian Energy Foundation are offering free 20-minute energy consultations to Manningham residents via phone to help you with energy advice, including:

- Tips on how to shop around for the best energy tariff
- How to heat and cool your home more cost-effectively without sacrificing on comfort
- Easy ways you can use less energy when working, studying and cooking
- Recommendations on powering your home with solar.

Book a free consultation by calling the Australian Energy Foundation on 1300 236 855.

## Simplified Chinese/簡體中文

### 为今年夏天做好应急准备

这里有一些你可以采取的步骤，这样你和家人就可以为紧急情况做好准备。

制定一份应急计划，并与你的家人邻居共同实践。备一份计划的纸本文件，放在家里容易拿到的地方，在你的智能设备上留一份备份文件。记得也要为你的宠物制定一份计划。在压力下是很难找到必需品。准备一个家庭应急包，里面放上关键物品，并放在一个地方。备应急包应考虑一下如果你离开至少72小时时间所需要的物品。

[manningham.vic.gov.au/prepare-for-an-emergency](http://manningham.vic.gov.au/prepare-for-an-emergency)

为减少森林火灾给你家带来的风险，移除房产中的杂草。弄清楚移除植被是否需要经批准进行：

[manningham.vic.gov.au/bushfire-emergencies](http://manningham.vic.gov.au/bushfire-emergencies)  
9840 9333

### 你对鲁菲湖公园（Ruffey Lake Park）有什么看法

我们为Ruffey Lake Park制定了总体规划草案，为未来15年公园的设计、发展和管理提供了明确的方向。

要查看总体规划草案并提供您的反馈，请访问网站[yoursaymanningham.com.au/ruffey-lake-park](http://yoursaymanningham.com.au/ruffey-lake-park)

### 曼宁汉姆（Manningham）选举新议会

Manningham在最近的议会选举中，为9个新选区的每个区都选出了新的代表。议员安德鲁·康伦（Andrew Conlon）当选为市长，议员陈安娜（Anna Chen）当选为副市长。

了解议员们信息，请访问网站  
[manningham.vic.gov.au/councillors](http://manningham.vic.gov.au/councillors)

## Traditional Chinese/繁體中文

### 今年夏天做好緊急準備

以下是一些步驟你可以採用，讓你和家人為緊急情況做好準備。

制定一份應急計劃並與你的家人和鄰居一起演習實踐。將計劃書的正本存放在家中一個方便位置，並將後備副本保存在智能設備上。確保對寵物也有一個計劃。在壓力下會很難找到必需品，所以在某位置要預備一個家庭應急工具箱，存放必需的關鍵物品。要預備這個工具箱，請考慮一下如果你需要離開至少72個小時，你所需要的物品。

[manningham.vic.gov.au/prepare-for-an-emergency](http://manningham.vic.gov.au/prepare-for-an-emergency)

清除在你住處過度茂密的樹木，以減少森林大火給你房屋帶來的風險。了解是否需要批准清除樹木：

[manningham.vic.gov.au/bushfire-emergencies](http://manningham.vic.gov.au/bushfire-emergencies)  
9840 9333

### 發表你對Ruffey Lake Park的意見

我們已經為 Ruffey Lake Park制定了總體規劃草案，為公園在未來15年的設計，發展和管理提供了明確的方向。

要查看總體規劃草案並提供意見，請訪問[yoursaymanningham.com.au/ruffey-lake-park](http://yoursaymanningham.com.au/ruffey-lake-park)

### Manningham選舉新的市議會

Manningham在最近的市議會選舉中，為九個新區的每一區選出了新的代表。議員 Andrew Conlon被選為市長，議員 Anna Chen則被選為副市长。

要更多了解你的議員，請訪問  
[manningham.vic.gov.au/councillors](http://manningham.vic.gov.au/councillors)

## Greek/Ελληνικά

### Προετοιμαστείτε για περιπτώσεις έκτακτης ανάγκης αυτό το καλοκαίρι

Εδώ είναι μερικά μέτρα που μπορείτε να πάρετε ούτως ώστε εσείς και η οικογένειά σας να είστε προετοιμασμένοι σε περίπτωση έκτακτης ανάγκης.

Καταρτίστε ένα σχέδιο έκτακτης ανάγκης και εξασκήστε το με την οικογένειά σας και τους γείτονες. Κρατήστε ένα γραπτό αντίγραφο του σχεδίου σας σε εύκολα προσβάσιμο μέρος στο σπίτι σας και άλλο ένα αντίγραφο στην έξυπνη συσκευή σας. Διασφαλίστε ότι έχετε ένα σχέδιο και για τα κατοικίδια σας. Μπορεί να δυσκολευτείτε να εντοπίσετε απαραίτητα αντικείμενα υπό πίεση. Ετοιμάστε ένα κουτί έκτακτης ανάγκης με απαραίτητα αντικείμενα σε ένα μέρος. Για το κουτί σας, σκεφθείτε τι πράγματα θα χρειαζόσασταν εάν φεύγατε για τουλάχιστον 72 ώρες.

[manningham.vic.gov.au/prepare-for-an-emergency](http://manningham.vic.gov.au/prepare-for-an-emergency)

Μειώστε τους κινδύνους που διατρέχει το σπίτι σας από δασικές πυρκαγιές απομακρύνοντας την ψηλή βλάστηση από το ακίνητό σας. Μάθετε εάν χρειάζεστε έγκριση για να απομακρύνετε την βλάστηση:

[manningham.vic.gov.au/bushfire-emergencies](http://manningham.vic.gov.au/bushfire-emergencies)  
9840 9333

### Υποβάλετε τα σχόλιά σας για το Ruffey Lake Park

Έχουμε αναπτύξει ένα προσχέδιο για το Ruffey Lake Park για την παροχή σαφούς καθοδήγησης του σχεδιασμού, της ανάπτυξης και της διαχείρισης του πάρκου για τα επόμενα 15 χρόνια.

Για να δείτε το προσχέδιο και να

υποβάλετε τα σχόλιά σας, επισκεφθείτε [yoursaymanningham.com.au/ruffey-lake-park](http://yoursaymanningham.com.au/ruffey-lake-park)

### Το Manningham εκλέγει νέο Συμβούλιο

Το Manningham έχει εκλέξει νέους εκπροσώπους στις πρόσφατες Δημοτικές εκλογές, για το κάθε ένα από τα εννέα εκλογικά διαμερίσματα. Ο Σύμβουλος Andrew Conlon εκλέχθηκε Δήμαρχος και η Σύμβουλος Anna Chen εκλέχθηκε Αντιδήμαρχος.

Για πληροφορίες για τους Συμβούλους σας, επισκεφθείτε [manningham.vic.gov.au/councillors](http://manningham.vic.gov.au/councillors)

## Italian/Italiano

### Preparati per un'emergenza quest'estate

Ecco alcuni passi che si possono prendere in modo che tu e la tua famiglia siate pronti per un'emergenza.

Scrivi un piano di emergenza e mettilo in pratica con la tua famiglia e i tuoi vicini di casa. Conserva una copia scritta del tuo piano in un luogo della tua casa facilmente accessibile e una copia di backup sul tuo dispositivo smart. Assicurati di avere un piano anche per i tuoi animali domestici. Può essere difficile individuare gli elementi essenziali sotto stress. Costruisci un kit di emergenza domestica con gli elementi chiave in un luogo unico. Per il tuo kit, pensa agli elementi di cui avresti bisogno se fossi assente per almeno 72 ore.

[manningham.vic.gov.au/prepare-for-an-emergency](http://manningham.vic.gov.au/prepare-for-an-emergency)

Riduci i rischi che gli incendi boschivi pongono per la tua casa rimuovendo la vegetazione eccessiva dalla tua proprietà. Informati se hai bisogno del permesso per rimuovere la vegetazione:

[manningham.vic.gov.au/bushfire-emergencies](http://manningham.vic.gov.au/bushfire-emergencies)  
9840 9333

### Dici la tua su Ruffey Lake Park

Abbiamo sviluppato una bozza del piano regolatore per Ruffey Lake Park per fornire una chiara direzione per la futura progettazione, sviluppo e gestione del parco nei prossimi 15 anni.

Per visualizzare la bozza del piano regolatore e fornire il tuo feedback visita il sito [yoursaymanningham.com.au/ruffey-lake-park](http://yoursaymanningham.com.au/ruffey-lake-park)

## Manningham elegge il nuovo Consiglio

Manningham ha eletto nuovi rappresentanti nelle recenti elezioni del Consiglio, per ciascuno dei nove nuovi rioni. Il consigliere Andrew Conlon è stato eletto sindaco e la consigliera Anna Chen è stata eletta vice sindaco.

Per conoscere i tuoi consiglieri visita il sito [manningham.vic.gov.au/councillors](http://manningham.vic.gov.au/councillors)

### فارسی/Persian (Farsi)

#### در این تابستان آماده اضطراری باشید

در اینجا چند قدم وجود دارد که شما می توانید انجام دهید تا شما و خانواده تان برای شرایط اضطراری آماده باشید.

یک طرح اضطراری بنویسید و آن را با خانواده و همسایگان خود تمرین کنید. یک نسخه کتبی از طرح خود را در مکانی که در خانه تان به راحتی قابل دسترسی است و یک نسخه پشتیبان را در دستگاه هوشمند خود نگه دارید. حتما برای حیوانات خانگی خود نیز طرحی داشته باشید. یافتن اقلام ضروری در شرایط استرس دار ممکن است دشوار باشد. یک کیت اضطراری در منزل را با اقلام اصلی در یک مکان خاص درست کنید. برای کیت خود به مواردی فکر کنید که اگر حداقل 72 ساعت دور بودید به آنها نیاز خواهید داشت.

[manningham.vic.gov.au/prepare-for-an-emergency](http://manningham.vic.gov.au/prepare-for-an-emergency)

با از بین بردن پوشش گیاهی بلند از ملک تان، خطراتی را که آتش سوزی جنگل برای خانه شما ایجاد می کند کاهش دهید. ببینید آیا برای از بین بردن پوشش گیاهی به تأیید نیاز دارید:

[manningham.vic.gov.au/bushfire-emergencies](http://manningham.vic.gov.au/bushfire-emergencies)  
9333 9840

#### نظر خود را در مورد Ruffey Lake Park بیان کنید

ما یک پیش نویس اصلی برای Ruffey Lake Park تهیه کرده ایم که جهت گیری مشخصی برای طراحی، توسعه و مدیریت پارک در طی 15 سال آینده را ارائه می دهد.

برای مشاهده پیش نویس طرح اصلی و ارائه نظر خود، به سایت

[yoursaymanningham.com.au/ruffey-lake-park](http://yoursaymanningham.com.au/ruffey-lake-park)  
مراجعه کنید.

#### مینگهام شورای جدید را انتخاب می کند

مینگهام در انتخابات اخیر شورا برای هر یک از 9 بخش جدید نمایندگان جدیدی را انتخاب کرده است. عضو شورا اندرو کانلون به عنوان شهردار و عضو شورا آنا چن به عنوان معاون شهردار انتخاب شدند.

برای اطلاع در مورد اعضای شورای خود به [manningham.vic.gov.au/councillors](http://manningham.vic.gov.au/councillors) مراجعه کنید

## عربی/Arabic

### كونوا مستعدين للطوارئ هذا الصيف

في ما يلي بعض الخطوات التي يمكنكم اتخاذها حتى تكونون أنتم وعائلتكم على استعداد لحالة الطوارئ.

اكتبوا خطة طوارئ وتدرّبوا عليها مع عائلتكم وجيرانكم. احتفظوا بنسخة مكتوبة من خطتكم في مكان يسهل الوصول إليه في منزلكم ونسخة احتياطية على جهازكم الذكي. تأكدوا من وجود خطة لحيواناتكم الأليفة أيضًا. قد يكون من الصعب تحديد العناصر الأساسية تحت الضغط. قوموا بإنشاء مجموعة طوارئ منزلية بالعناصر الأساسية في مكان واحد. وبالنسبة لمجموعتكم، فكّروا في العناصر التي قد تحتاجونها إذا كنتم بعيدين لمدة 72 ساعة على الأقل.

[manningham.vic.gov.au/prepare-for-an-emergency](http://manningham.vic.gov.au/prepare-for-an-emergency)

قلّوا من المخاطر التي تشكلها حرائق الغابات على منزلكم عن طريق إزالة النباتات المتضخمة من عقاركم. اكتشفوا ما إذا كنتم بحاجة إلى موافقة لإزالة الغطاء النباتي:

[manningham.vic.gov.au/bushfire-emergencies](http://manningham.vic.gov.au/bushfire-emergencies)  
9333 9840

#### شاركوا برأيكم في Ruffey Lake Park

لقد طورنا مسودة مخطط رئيسي لـ Ruffey Lake Park لإعطاء توجيه واضح لتصميم وتطوير وإدارة الحديقة على مدار الخمسة عشر عامًا القادمة.

للاطلاع على مسودة المخطط الرئيسي وتقديم ملاحظتكم، قوموا بزيارة

[yoursaymanningham.com.au/ruffey-lake-park](http://yoursaymanningham.com.au/ruffey-lake-park)

#### تنتخب Manningham مجلس جديد

انتخب Manningham ممثلين جدد في انتخابات المجلس الأخيرة لكل من الأقسام التسعة الجديدة. تم انتخاب عضو البلدية أندرو كونلون (Andrew Conlon) رئيس للبلدية وتم انتخاب عضو المجلس آنا تشين (Anna Chen) نائبة رئيس البلدية.

لمعرفة المزيد عن أعضاء المجلس، قوموا بزيارة

[manningham.vic.gov.au/councillors](http://manningham.vic.gov.au/councillors)



Cr Andrew Conlon  
(Mayor)  
**CURRAWONG WARD**  
andrew.conlon@  
manningham.vic.gov.au  
0425 732 238



Cr Anna Chen  
(Deputy Mayor)  
**WALDAU WARD**  
anna.chen@  
manningham.vic.gov.au  
0429 470 051



Cr Geoff Gough  
**BOLIN WARD**  
geoffreygough@  
manningham.vic.gov.au  
0412 345 081



Cr Tomas Lightbody  
**MANNA WARD**  
tomas.lightbody@  
manningham.vic.gov.au  
0437 829 635



Cr Stephen Mayne  
**RUFFEY WARD**  
stephen.mayne@  
manningham.vic.gov.au  
0412 106 241



Cr Laura Mayne  
**SCHRAMM WARD**  
laura.mayne@  
manningham.vic.gov.au  
0447 981 010



Cr Deirdre Diamante  
**TULLAMORE WARD**  
deirdre.diamante@  
manningham.vic.gov.au  
0413 584 047



Cr Michelle Kleinert  
**WESTERFOLDS WARD**  
michelle.kleinert@  
manningham.vic.gov.au  
0400 902 822



Cr Carli Lange  
**YARRA WARD**  
carli.lange@  
manningham.vic.gov.au  
0433 256 840



## A new park for Doncaster Hill

A new park on Hepburn Road in Doncaster is one step closer to reality with a concept plan for the new park now approved by Council. We are now developing a detailed design for the park.

The concept plan was developed following local community feedback. The new design will include outdoor seating, a barbecue area, bike hoops, paths, a drinking fountain, public art, large open lawn areas, playspace, nature play and canopy tree planting.

The as-yet-unnamed park is designed to provide additional open space to local residents living, working or visiting the Doncaster Hill area.

Construction on the new park, including demolition of existing structures on site, is expected to start mid-2021 with the park to open in late 2022.

For more information

[yoursay.manningham.vic.gov.au/hepburn-reserve](https://yoursay.manningham.vic.gov.au/hepburn-reserve)

9840 9333

### COUNCIL MEETINGS

Tuesday 15 December, 7.00 pm

Tuesday 28 January, 7.00 pm

Tuesday 23 February 7.00 pm

 Council Chamber  
Manningham Civic Centre

[manningham.vic.gov.au/council-meetings](https://manningham.vic.gov.au/council-meetings)

*These meeting details are subject to change. Please visit our website for the correct details.*

### CONNECT WITH US

 [twitter/@manninghamcc](https://twitter.com/manninghamcc)

 [facebook/manninghamcouncil](https://facebook.com/manninghamcouncil)

 [instagram/@CityofManningham](https://instagram/@CityofManningham)

[manningham.vic.gov.au](https://manningham.vic.gov.au)



This issue of *Manningham Matters* is printed on Publishers Offset an PEFC™ certified stock, manufactured in Australia.

### CONTACT US

#### IN PERSON

Manningham Civic Centre  
699 Doncaster Road  
Doncaster, Victoria 3108

#### POSTAL ADDRESS

Manningham City Council  
PO Box 1, Doncaster, Victoria 3108

Office hours  
Monday to Friday 8.00am to 5.00pm  
Closed public holidays.

 03 9840 9333  03 9848 3110

 [manningham@manningham.vic.gov.au](mailto:manningham@manningham.vic.gov.au)

### URGENT

For any urgent matters, please call our after hours service on 9840 9333. In an emergency, dial 000.

### MANNINGHAM MATTERS

If you have an upcoming community event or activity in Manningham or feedback about *Manningham Matters*, get in touch.

 [manningham.vic.gov.au/submit-a-story](https://manningham.vic.gov.au/submit-a-story)

### TOPICAL WEBSITE PAGES

#### BE EMERGENCY READY

 [manningham.vic.gov.au/prepare-for-an-emergency](https://manningham.vic.gov.au/prepare-for-an-emergency)

#### PREPARE YOUR PROPERTY

 [manningham.vic.gov.au/bushfire-emergencies](https://manningham.vic.gov.au/bushfire-emergencies)

#### MEET YOUR NEW COUNCILLORS

 [manningham.vic.gov.au/councillors](https://manningham.vic.gov.au/councillors)

#### RUFFEY LAKE PARK

 [yoursaymanningham.com.au/ruffey-lake-park](https://yoursaymanningham.com.au/ruffey-lake-park)

#### MANNINGHAM MATTERS DIGITAL

 [manningham.vic.gov.au/manningham-matters](https://manningham.vic.gov.au/manningham-matters)

This publication is part of Council's commitment to improve communication and consultation with residents. While every effort is made to ensure that information included in *Manningham Matters* is accurate at the time of publishing, details are subject to change. Manningham Council and its employees do not guarantee that the publication is without any flaw and therefore disclaims all liability for any errors, loss or other consequence which may arise from you relying on information contained in this publication.